

STATE OF MICHIGAN
DEPARTMENT
OF
NATURAL RESOURCES

LAND CORNER RECORD

Alger COUNTY

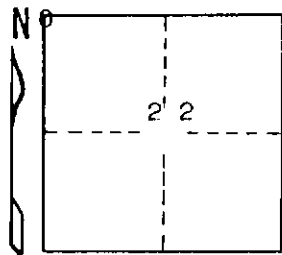
T 46 N R 22 W

DESCRIPTION OF CORNER Section corner for sections ^{16/15} 21/22

CORNER MONUMENT 1½" O.D. iron pipe with 3½" brass cap dated November 1915

DATE MONUMENT PLACED AND WITNESSED 10/19/69, F. J. Bray

WITNESSES TO CORNER..... 12" Hemlock (S. 15) (NBT) N 59° E, 55½ links



8" Y. Birch (S. 16) (NBT) N 62° W, 40 links

Iron Rail 5.0' high N 85° E, 01½ links

AND

CIRCLE CORNER REGISTERED

DESCRIPTION IN DETAIL AS TO HOW CORNER WAS LOCATED AND IDENTIFIED OR RESTORED.

This corner was rewitnessed as set by County Surveyor in 1915.

SURVEYOR'S SEAL

DISTRIBUTION:

SIGNED Frank J. Bray DATE 12/11/69
REGISTERED LAND SURVEYOR
Frank J. Bray

County Courthouse
Area Forester (Regions I & II)
District or Region Surveyor
Forestry Div., Lansing

R 4047
Rev. 10/68