

STATE OF MICHIGAN  
DEPARTMENT  
OF  
NATURAL RESOURCES

LAND CORNER RECORD

Alger COUNTY

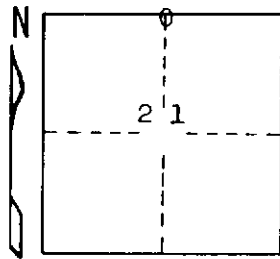
T 46 N R 22 W

DESCRIPTION OF CORNER 1/4 corner for sections <sup>16</sup> 21

CORNER MONUMENT 1" iron pipe with 4" aluminum cap

DATE MONUMENT PLACED AND WITNESSED 8/18/69, F. J. Bray

WITNESSES TO CORNER..... 10" S. Maple (1/4 S) (NBT) S 26° W, 16½ links



16' W. Pine (1/4 S NBT) S 49° E, 32½ links

Iron Rail N 49° E, 115½ links

AND

CIRCLE CORNER REGISTERED

DESCRIPTION IN DETAIL AS TO HOW CORNER WAS LOCATED AND IDENTIFIED OR RESTORED.

This corner was placed midway and on line between section corners to east and to west.

SURVEYOR'S SEAL

DISTRIBUTION:

SIGNED

*Frank J. Bray*  
REGISTERED LAND SURVEYOR

DATE 12/11/69

Frank J. Bray

County Courthouse  
Area Forester (Regions I & II)  
District or Region Surveyor  
Forestry Div., Lansing

R 4047  
Rev. 10/68