

MAY 10 1995

COMMISSION

Approved by Alger County
Land Survey Re-monumentation
Peer Group Under Act 345 of
P.A. of 1990 On 4-8 1995

Donald W. Carlson
Chairman

LAND CORNER RECORDATION CERTIFICATE
Filing Requirement of Act 74, Mich. P.A. 1970

4-292

For corners in	Located In:	Corner Code #
Alger		
(County)		
1. Public Land Survey	T <u>46N</u> R <u>18W</u>	<u>G5</u>
	T _____ R _____	_____
	T _____ R _____	_____
	T _____ R _____	_____
2. Property Controlling in Section	S _____ T _____ R _____	_____
	S _____ T _____ R _____	_____
3. Miscellaneous Property in Sec.	S _____ T _____ R _____	_____
	S _____ T _____ R _____	_____

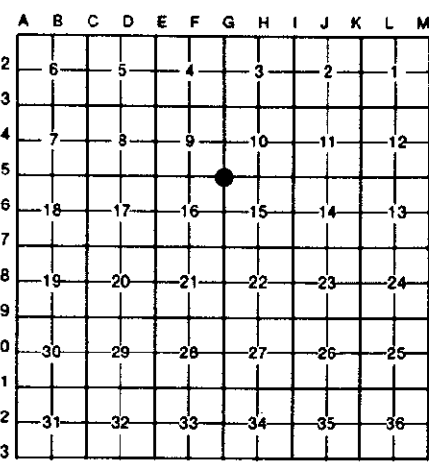
FILED
APR 19 9:00 a.m.

APR 20 1995

DONALD W. CARLSON
REG. SURVEYOR

Register of Deeds Stamp & File Number

4. Lot No. _____, Recorded Plat _____
5. Private Claims _____



I, Robert L. James, in a field survey on November 11, 1994, 19_____, do hereby certify that under requirements of P.A. 74, Michigan P.A. of 1970, the corner points mentioned in lines 1 and 2 above were in conformance with regulations and rules therefore as required in the current manual of survey instructions of the United States Department of the Interior, Bureau of Land Management or by a decree of a Court of Law and/or that the corner points mentioned in lines 3, 4 and 5 above were in conformance with the rules of the Michigan Board of Land Surveyors or by a Decree of a Court of Law; established, re-established, monumented, re-monumented, recovered, found as expressed below:

NOTE: Not more than 4 corners, all in the same town and range, may be recorded on this certificate.

A. Description of original monument and accessories and/or subsequent restoration:

G5: PLS-George E. Adair, DS, 1855, Set post corner of sections 9,10,15 and 16, - Sugar 14", N.72 E., 23 1/2 links, Sugar 16", S.35 W., 31 links. CCI Forestry Division, Land and Timber Examination Report, R.Radcliffe, RLS, 1950, Sq. Maple stake, Sq. Sugar and iron, No references given, 1940 through present.

B. Description of corner evidence found and/or method applied in restoring or reestablishing corner:

G5: Began at Section corner 15-16-21-22, T.46N., R.18W. Ran a corrected compass line on GLO bearing North. Along line at 1.10 chains leave swamp (GLO 1.25 ch.) and at 3.45 chains brow of hill (GLO 3.50 ch.) and at 10.65 chains (GLO 10.60 ch. Hemlock 14') found 29' Hemlock stub with blaze and axe notches marked according to GLO survey instructions. At 80.0 chains set temp. corner position and established GLO BT locations. At GLO BT, N.72 E., 23 1/2 links found 5" Maple and whips growing out of stump mound with traces of badly decayed wood. Distance from Hemlock stub to corner 69.46 ch., GLO 69.40 ch. To north at 20.11 ch. found blazed 8" Fir dead and down with rusty USFS tag (no record). Dist. to 1/4 Sec.Cor. to N., 40.11 ch., GLO 40.00 ch. Dist. to 1/4 Sec.Cor. east 40.05 ch., GLO 39.97 ch. Dist. to Sec.Cor. to south, 80.11 ch., GLO 80.00 ch. Dist. west to well defined swamp call, 36.48 ch., GLO 36.50 ch. Corner position set at mean of the four measurements, North, South, East and West. Six ft. north of cor. position found 20" Maple stump believed to be squared sugar in 1950 report, squared maple stake and iron never found. Corner position is accepted as the best available evidence of the position of the original corner.

C. Description of monument for corner and accessories established to perpetuate locating the position of the corner:

G5: Set 2 1/4" Alum. Monument w/ 3 1/4" Alum. Cap stamped to identify corner position. Established Reference trees w/ BT signs, blazed, scribed and painted. Set PK nails for measure w/ brass I.D. washers in the following reference trees. Beech 10", S.31 W., 6.46 feet, "S16 BT", Maple 6", N.28 1/2 W., 15.88 feet, "S9 BT", Maple 12", N.45 E., 31.55 feet, "S10 BT", Maple 8", S.49 E., 49.39 feet, "S15 BT", Steel witness post with Survey marker sign, S.78 W., 1.5 feet. All bearings are magnetic.

Signed by Robert L. James
Surveyor's Michigan License No. 25849

Date 12 April, 1995