

Approved by Alger County Land Survey Remonumentation Peer Group Under Act 345 of P.A. of 1990 On 12-12-1995

JAN 28 1996

Donald W. Carlson
Chairman

LAND CORNER RECORDATION CERTIFICATE
Filing Requirement of Act 74, Mich. P.A. 1970

COMMISSION
4-327

For corners in Alger (County) Located In: _____ Corner Code # _____

- 1. Public Land Survey T 46N R 18W 66
T _____ R _____
T _____ R _____
T _____ R _____
- 2. Property Controlling S _____ T _____ R _____
in Section S _____ T _____ R _____
- 3. Miscellaneous S _____ T _____ R _____
Property in Section S _____ T _____ R _____

REC'D and FILED

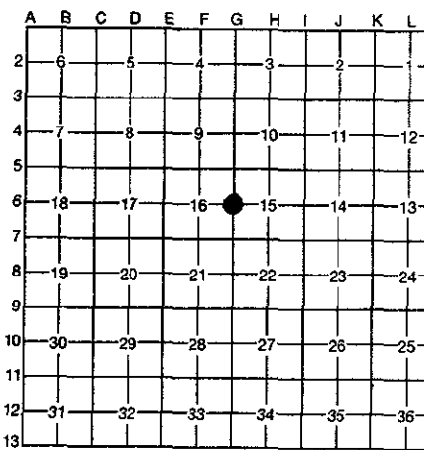
DEC 20 1995

2:45 p.m.

DONALD W. KINNUNEN, County Clerk
ALGER COUNTY, MI

Register of Deeds Stamp & File Number

- 4. Lot No. _____, Recorded Plat _____
- 5. Private Claims _____



Robert L. Jamros, in a field survey on August 30, 1995, do hereby certify that under requirements of P.A. 74, Michigan P.A. of 1970, the corner points mentioned in lines 1 and 2 above were in conformance with regulations and rules therefore as required in the current manual of survey instructions of the United States Department of the Interior, Bureau of Land Management or by a decree of a Court of Law and/or that the corner points mentioned in lines 3, 4 and 5 above were in conformance with the rules of the Michigan Board of Professional Surveyors or by a Decree of a Court of Law; established, re-established, monumented, re-monumented, recovered, found as expressed below:

NOTE: Not more than 4 corners, all in the same town and range, may be recorded on this certificate.

A. Description of original monument and accessories and/or subsequent restoration:
G6: PLS-George E. Adair, DS, 1855, Set Qr. Section Post- Beech 16", N.16 E., 6 links, Sugar 11", S.32 W., 19 1/2 links. No Subsequent Restoration.

B. Description of corner evidence found and/or method applied in restoring or reestablishing corner:
G6: Began at Section corner 15-16-21-22-, T.46N., R.18W. Ran corrected compass line on a GLO bearing North. Along line at 1.10 chains leave swamp (GLO 1.25 ch.) and at 3.45 chains brow of hill (GLO 3.50 ch.) and at 10.57 chains (GLO 10.60 ch. Hemlock 14") found 29" Hemlock stub with blaze and axe notches marked according to GLO survey instructions. At 40.0 chains set temp. corner position and established GLO BT locations. At the GLO BT, N.16 E., 6 links found stump hole with traces of decayed wood, evidence inconclusive. Established corner position at proportional distance on line extended north from section corner and line tree to south. Distance from hemlock stub north to corner position 29.39 chains, GLO 29.40 chains. Distance from corner position to section corner south, 39.96 chains and to section corner north 39.95 chains. Accepted the corner position as a careful and faithful reestablishment of the position of the original corner.

C. Description of monument for corner and accessories established to perpetuate locating the position of the corner:
G6: Set 2 1/4" Alum. Monument w/ 3 1/4" Alum. Cap stamped to identify corner position. Established reference trees w/ BT signs, blazed, scribed and painted. Set PK nails for measure w/ brass I.D. washers in the following reference trees. Twin Maple 7" & 10", S.43 E., 33.15 feet, "1/4s BT", Beech 6", S.14 W., 32.33 feet, "1/4s BT", Maple 12", N.44 W., 20.89 feet, "1/4s BT", Maple 6", N.66 E., 15.12 feet, "1/4s BT", Steel witness post with Survey marker sign, N.41 E., 1.5 feet. All bearings are magnetic.

Signed by Robert L. Jamros
Surveyor's Michigan License No. 25849 NO. 25849 Date December 1995

