

MICHIGAN
DEPARTMENT OF CONSERVATION
FORESTRY DIVISION

LAND CORNER RECORD

T. 47-48 N.R. 17 W

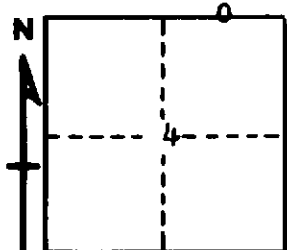
Alger COUNTY

DESCRIPTION OF CORNER E 1/16 For Secs. 4, T47N R17W and 33 T48N R17W

CORNER MONUMENT 1" Iron Pipe with 4" Aluminum Cap

DATE MONUMENT PLACED AND WITNESSED 6/30/65 with Miller

WITNESSES TO CORNER..... 14" Hemlock (E 1/16 BT), N 49° W, 15½ Lks.



6" S. Maple (E 1/16 BT) S 22° W, 10 Lks.

AND

CIRCLE CORNER REGISTERED

DESCRIPTION IN DETAIL AS TO HOW CORNER WAS LOCATED AND IDENTIFIED OR RESTORED.

This Corner was placed midway and on Line between Section Corner to East and 1/4 Corner to West.

SURVEYOR'S SEAL

SIGNED Frank J. Bray DATE 9/10/1965
REGISTERED LAND SURVEYOR