

MICHIGAN  
DEPARTMENT OF CONSERVATION  
FORESTRY DIVISION

LAND CORNER RECORD

T. 47 N.R. 17 & 18 W

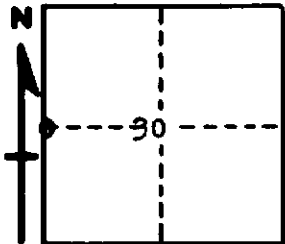
Alger COUNTY

DESCRIPTION OF CORNER 1/4 Corner for Secs. 8 T47N R18W 25/30 T47N R17W

CORNER MONUMENT 1" Iron Pipe with 4" Aluminum Cap

DATE MONUMENT PLACED AND WITNESSED 6/8/1965, Bray and Miller

WITNESSES TO CORNER..... 10" H. Maple (1/4S NBT), S 72° W, 42½ lks.



6" Elm (1/4S NBT), N 26° W, 10 lks.

AND

CIRCLE CORNER REGISTERED

DESCRIPTION IN DETAIL AS TO HOW CORNER WAS LOCATED AND IDENTIFIED OR RESTORED.

This Corner was placed midway and on line between Section Corners.  
No original evidence.

SURVEYOR'S SEAL

SIGNED Frank J. Bray DATE 9/9/1965  
REGISTERED LAND SURVEYOR