

**LAND CORNER RECORDATION CERTIFICATE**  
**Filing Requirement of Act 74, Mich. P.A. 1970**

For corners in  
Alger  
 (County)

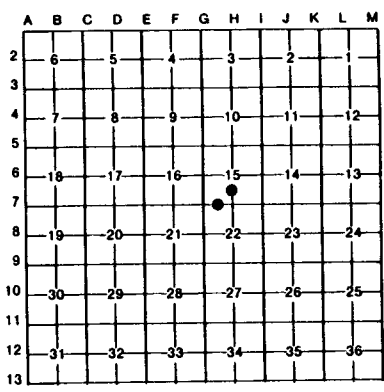
Located In: \_\_\_\_\_ Corner Code ## \_\_\_\_\_

1. Public Land Survey	T _____ R _____	_____
	T _____ R _____	_____
	T _____ R _____	_____
	T _____ R _____	_____
2. Property Controlling in Section	S <u>15</u> T <u>47N</u> R <u>17W</u>	<u>15</u>
	S <u>15</u> T <u>47N</u> R <u>17W</u>	<u>12</u>
3. Miscellaneous Property in Sec.	S _____ T _____ R _____	_____
	S _____ T _____ R _____	_____

Register of Deeds Stamp & File Number

4. Lot No. \_\_\_\_\_, Recorded Plat \_\_\_\_\_

5. Private Claims \_\_\_\_\_



Oct 04 2001

I, Stephan J. Szyszkoski, in a field survey on \_\_\_\_\_, 19\_\_\_\_\_, do hereby certify that under requirements of P.A. 74, Michigan P.A. of 1970, the corner points mentioned in lines 1 and 2 above were in conformance with regulations and rules therefore as required in the current manual of survey instructions of the United States Department of the Interior, Bureau of Land Management or by a decree of a Court of Law and/or that the corner points mentioned in lines 3, 4 and 5 above were in conformance with the rules of the Michigan Board of Land Surveyors or by a Decree of a Court of Law; established, re-established, monumented, re-monumented, recovered, found as expressed below:

**NOTE: Not more than 4 corners, all in the same town and range, may be recorded on this certificate.**

A. Description of original monument and accessories and/or subsequent restoration:

(15-Sec. 15) West 1/16 corner between Sections 15-22. Corner not established in the original survey.  
 (12-Sec. 15) South 1/16 corner, Section 15. Corner not established in the original survey. Corner apparently established by Edwin Swan ca. 1947. According to R.L. Jamros RLS, he has placed concrete monuments at several other corners on this section. Corner shown as monumented with a concrete monument 1319.54' north of the Quarter corner common to Sections 15-22 on a survey by William R. Donnan, RLS, dated July 30, 1974.

B. Description of corner evidence found and/or method applied in restoring or reestablishing corner:

(15-Sec. 15) Established the corner midway and on a line of mean true bearing between Section corner 1320.10' west and Quarter corner 1320.10' East.  
 (12-Sec. 15) Recovered a 1/2" rebar encased in a 4"x4" concrete monument 1319.73' north of a similar monument recorded as the Quarter corner between Sections 15-22, and in substantial accord with the Donnan survey. The monument is 1.3' west of a straight line between said Quarter corner and the monumented center of Section 15 (intersection of 1/4 lines monumented by the undersigned) and 3.1' south of the midpoint. I accept the monument as a careful and faithful determination of the position of the corner.

C. Description of monument for corner and accessories established to perpetuate locating the position of the corner:

(15) Set 1" IDx36" iron pipe with 4" alum. MDNR tablet. Blazed, scribed, and set measuring nails in: 10" Spruce S57E 21.95'      "W1/16 BT" 30" Cedar N55W 2.4'      do 14" Cedar S31W 12.45'      do 12" Cedar N13W 46.0'      do Set cedar post adjacent. Bearings are magnetic. Distances to nail with disc.	(12) Found 4"x4" square concrete monument. Blazed, scribed, and set measuring nails in: 14" Maple N68W 5.58'      "S1/16 BT" Twin 8" Maple S73E 18.8'      do 10" Maple S43E 17.38'      do 8" Maple S05E 28.1'      do Placed cedar post adjacent. Bearings are magnetic. Distances to nail with disc.
--	--



Signed by Stephan J. Szyszkoski Date 10/17/01  
 Surveyor's Michigan License No. 33986  
 For the Michigan Department of Natural Resources - Office of Property Management