

**LAND CORNER RECORDATION CERTIFICATE**  
**Filing Requirement of Act 74, Mich. P.A. 1970**

For corners in  
Alger

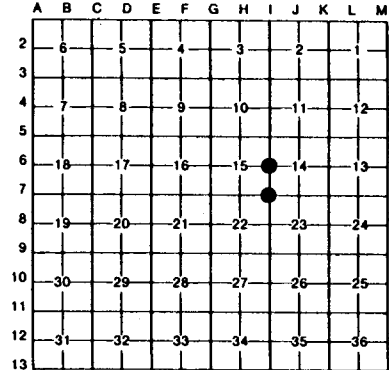
(County)	Located In:	Corner Code <del>≠</del>
1. Public Land Survey	T <u>47N</u> R <u>17W</u>	<u>I6</u>
	T <u>47N</u> R <u>17W</u>	<u>I7</u>
	T _____ R _____	_____
	T _____ R _____	_____
2. Property Controlling in Section	S _____ T _____ R _____	_____
	S _____ T _____ R _____	_____
3. Miscellaneous Property in Sec.	S _____ T _____ R _____	_____
	S _____ T _____ R _____	_____

Register of Deeds Stamp & File Number

4. Lot No. \_\_\_\_\_, Recorded Plat \_\_\_\_\_  
 5. Private Claims \_\_\_\_\_

I7 Oct 03 2001  
 I6 Oct 04 2001

I, Stephan J. Szyszkoski, in a field survey on \_\_\_\_\_, 19\_\_\_\_\_, do hereby certify that under requirements of P.A. 74, Michigan P.A. of 1970, the corner points mentioned in lines 1 and 2 above were in conformance with regulations and rules therefore as required in the current manual of survey instructions of the United States Department of the Interior, Bureau of Land Management or by a decree of a Court of Law and/or that the corner points mentioned in lines 3, 4 and 5 above were in conformance with the rules of the Michigan Board of Land Surveyors or by a Decree of a Court of Law; established, re-established, monumented, re-monumented, recovered, found as expressed below:



**NOTE: Not more than 4 corners, all in the same town and range, may be recorded on this certificate.**

A. Description of original monument and accessories and/or subsequent restoration:

- (I6) Quarter corner common to Sections 14-15. Reestablished in 1956 by Billy D. Buckler RLS. 1" pipe with 4" brass cap. 12" H. Maple N76E 47 links, 7" Y.Birch N20W 4.5 links, 6" Y.Birch S32E 32 links.
- (I7) Corner common to Sections 14-15-22-23. 1958: Billy D. Buckler RLS re-witnessed as found. 4"x4" concrete monument with iron pin. 17" Beech N53W 25 links, 15" H.Maple S76W 75 links, 6" H.Maple S74E 97 links. Corner described on recorded survey by William R. Donnan, 1974: Fd. Conc. Mon. 4" Maple 3.32' S36E, 20" Beech 17.68' N54W, 10" Maple 3.53' N12W. The concrete monument was likely placed by Edwin Swan, ca. 1947.

B. Description of corner evidence found and/or method applied in restoring or reestablishing corner:

- (I6) The 1956 monument was not recovered. Remonumented the 1956 position at record bearing and distance from the record witnesses which were recovered as follows: H.Maple NE, now 16" in good condition, Y.Birch NW, now 9", in good condition, Y.Birch SE, a rotting stump with measuring notch visible. Corner lies on west side of trail road.
- (I7) Recovered a 1/2" iron rod encased in a 4"x4" concrete monument, in good condition, and at record bearing and distance from the 1956 accessories, all in good condition. Accepted the monument as the best available evidence of the position of the original corner.

C. Description of monument for corner and accessories established to perpetuate locating the position of the corner:

- |  |  |
|--|--|
| (I6) Set 1"IDx32" iron pipe with 4" alum. MDNR tablet. Blazed, scribed, and set measuring nails in:<br>16" Sugar N76E 31.65'      "1/4S"<br>9" Y.Birch N23W 3.2'      "1/4S"<br>6" Y.Birch N75W 1.65'      "1/4S NBT"<br>6" Maple N18W 15.55'      do<br>Bearings are magnetic. Distances to nail with disc. | (I7) Found 1/2" rod encased in 4"square concrete monument. Blazed, scribed, and set measuring nails in:<br>26" Beech N50W 17.25'      "S15"<br>24" Sugar S84W 50.1'      "S22"<br>12" Sugar S72E 64.0'      "S23"<br>12" Sugar N01E 3.4'      "S14"<br>Placed cedar post adjacent. Bearings are magnetic. Distances to nail with disc. |
|--|--|



Signed by Stephan J. Szyszkoski Date 10/17/01

Surveyor's Michigan License No. 33986  
 For the Michigan Department of Natural Resources - Office of Property Management