

LAND CORNER RECORDATION CERTIFICATE
Filing Requirement of Act 74, Mich. P.A. 1970

For corners in
Alger
 (County)

Located In: _____ Corner Code ~~##~~

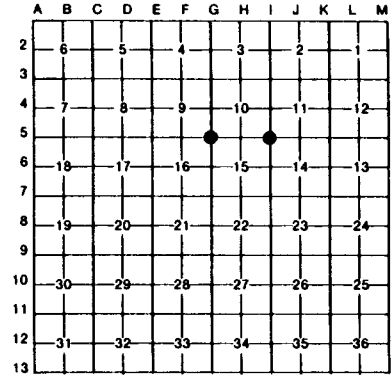
- | | | |
|------------------------------------|---------------------------|-----------|
| 1. Public Land Survey | T <u>47N</u> R <u>17W</u> | <u>65</u> |
| | T <u>47N</u> R <u>17W</u> | <u>15</u> |
| | T _____ R _____ | _____ |
| | T _____ R _____ | _____ |
| 2. Property Controlling in Section | S _____ T _____ R _____ | _____ |
| | S _____ T _____ R _____ | _____ |
| 3. Miscellaneous Property in Sec. | S _____ T _____ R _____ | _____ |
| | S _____ T _____ R _____ | _____ |

Register of Deeds Stamp & File Number

4. Lot No. _____, Recorded Plat _____
 5. Private Claims _____

15 Sep 24 2001
 65 Sep 18 2001

I, Stephan J. Szyszkoski, in a field survey on _____, 19_____, do hereby certify that under requirements of P.A. 74, Michigan P.A. of 1970, the corner points mentioned in lines 1 and 2 above were in conformance with regulations and rules therefore as required in the current manual of survey instructions of the United States Department of the Interior, Bureau of Land Management or by a decree of a Court of Law and/or that the corner points mentioned in lines 3, 4 and 5 above were in conformance with the rules of the Michigan Board of Land Surveyors or by a Decree of a Court of Law; established, re-established, monumented, re-monumented, recovered, found as expressed below:



NOTE: Not more than 4 corners, all in the same town and range, may be recorded on this certificate.

A. Description of original monument and accessories and/or subsequent restoration:

- (65) Corner common to Sections 9-10-15-16. 1956: Reestablished by Billy D. Buckler by double proportionate measurement. 1" iron pipe with 4" brass cap. 12" Hard Maple N31W 33 links. 6" Hard Maple N24E 18 links.
 (15) Corner common to Sections 10-11-14-15. 1956: Corner re-witnessed by Billy D. Buckler. Found 4" square concrete monument with 1/2" steel bar in center. 15" Y.Birch N13E 85 links, 6" B.Cherry S56E 54 links, 7" Hard Maple S45W 77 links.

B. Description of corner evidence found and/or method applied in restoring or reestablishing corner:

- (65) Recovered the 1956 monument, a 1" ID iron pipe with a 4" brass MI Dept. of Conservation tablet, in good condition, and at record bearing and distance from the 1956 accessories, both in good condition.
 (15) Recovered a 1/2" rebar encased in a 4"x4" concrete monument, in good condition, and at record bearing and distance from the 1956 NBTs, all in good condition. Accepted the monument as the best available evidence of the position of the original corner.

C. Description of monument for corner and accessories established to perpetuate locating the position of the corner:

- | | |
|--|---|
| (65) 1" ID iron pipe with 4" brass cap. Blazed, scribed, and set measuring nails in the following:
16" Sugar N27W 22.1' "S9"
10" Sugar N30E 11.8' "S10"
8" Sugar S50E 6.3' "S15 NBT"
6" Sugar N74W 22.6' "S9"
Placed cedar post adjacent. Bearings are magnetic. Distances to nail with disc. | (15) 1/2" rebar encased in 4" square concrete monument. Blazed, scribed, and set measuring nails in:
24" Y.Birch N24E 56.15' "S11"
8" B.Cherry S52E 35.65' "S14"
10" Sugar S48W 51.0' "S15"
5" Sugar S24W 8.35' "S15 NBT"
Squared and scribed post adjacent. Bearings are magnetic. Distances to nail with disc. |
|--|---|



Signed by Stephan J. Szyszkoski Date 10/17/01
 Surveyor's Michigan License No. 33986