

LAND CORNER RECORDATION CERTIFICATE
Filing Requirement of Act 74, Mich. P.A. 1970

For corners in
Alger

Located in: _____ Corner Code # _____

- | | | |
|------------------------------------|---------------------------|-----------|
| 1. Public Land Survey | T <u>47N</u> R <u>17W</u> | <u>C3</u> |
| | T _____ R _____ | _____ |
| | T _____ R _____ | _____ |
| | T _____ R _____ | _____ |
| 2. Property Controlling in Section | S _____ T _____ R _____ | _____ |
| | S _____ T _____ R _____ | _____ |
| 3. Miscellaneous Property in Sec. | S _____ T _____ R _____ | _____ |
| | S _____ T _____ R _____ | _____ |

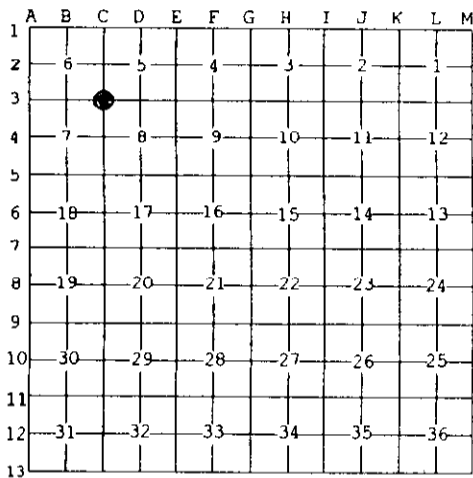
Register of Deeds Stamp & File Number

4. Lot No. _____, Recorded Plat _____
 5. Private Claims _____

Aug 10 2004

I, Stephan J. Szyszkoski, in a field survey on _____, 19____ do hereby state that under requirements of P.A. 74, Michigan P.A. of 1970, the corner points mentioned in lines 1 and 2 above were in conformance with regulations and rules therefore as required in the current manual of survey instructions of the United States Department of the Interior, Bureau of Land Management or by a decree of a Court of Law and/or that the corner points mentioned in lines 3, 4 and 5 above were in conformance with the rules of the Michigan Board of Land Surveyors or by a Decree of a Court of Law; established, re-established, monumented, recovered, found as expressed below:

NOTE: Not more than 2 corners, all in the same town and range, may be recorded on this certificate.



A. Description of original monument and accessories and/or subsequent restoration:
 (C3) Corner common to Sections 5-6-7-8. Reestablished in 1956 by Billy D. Buckler, RLS, using double proportionate measurement. Set 1" iron pipe with 4" brass cap. 12" Hard Maple S28W 38 links, 11" Hard Maple N06E 36.5 links, 8" Hard Maple S81E 31 links.

B. Description of corner evidence found and/or method applied in restoring or reestablishing corner:

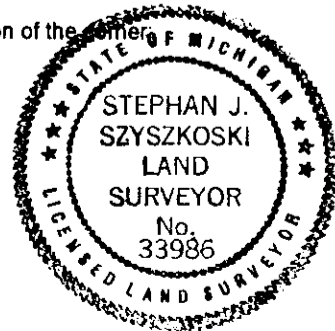
(C3) The 1956 monument was recovered in good condition S25W 22.8' from the position established in 1956. Judging by marks on the cap and the pipe, and its location with respect to the 1956 witness trees, it had evidently been struck by heavy equipment sometime in the past and had been reinstalled at an erroneous position. Several nearby trees have old overgrown blazes which face the erroneous position. I conclude from a ring count that the blazes were made about 30 years ago. I removed the 1956 monument and reinstalled it at the 1956 position, indicated by a distinct hole found in the forest floor at record bearing and distance from the 1956 witness trees, all recovered in good condition and with overgrown blazes. From the re-monumented position, distances to Quarter corners east and south check with the 1956 survey notes.

C. Description of monument for corner and accessories established to perpetuate locating the position of the corner:

(C3) Set 1" ID I. pipe with 4" brass cap. (the 1956 monument). Blazed, scribed, and set measuring nails in:
 12" Sugar N60E 2.45' "S5 N8T"
 The 1956 N8Ts:
 18" Sugar S35W 25.1' "S7"
 18" Sugar N10E 24.2' "S5"
 14" Sugar S74E 20.7' "S8"

Bearings are magnetic. Distances are to nail with tag. Set a cedar post adjacent.

Signed by Stephan J. Szyszkoski
 Surveyor's Michigan License No. 33986



Date 8/11/04