

Approved by Alger County  
Land Survey Remonumentation  
Peer Group Under Act 345 of  
P.A. of 1990 On 12-12-19 95

Donald W. Kimmlin  
Chairman  
For corners in  
Alger

**LAND CORNER RECORDATION CERTIFICATE**  
Filing Requirement of Act 74, Mich. P.A. 1970

JAN 23 1996

COMMISSIONER

(County)	Located In:	Corner Code #
1. Public Land Survey	T <u>49N</u> R <u>13W</u>	<u>F7</u>
	T _____ R _____	_____
	T _____ R _____	_____
	T _____ R _____	_____
2. Property Controlling in Section	S _____ T _____ R _____	_____
	S _____ T _____ R _____	_____
3. Miscellaneous Property in Sec.	S _____ T _____ R _____	_____
	S _____ T _____ R _____	_____

**REC'D and FILED**

DEC 20 1995

2:45 p.m.

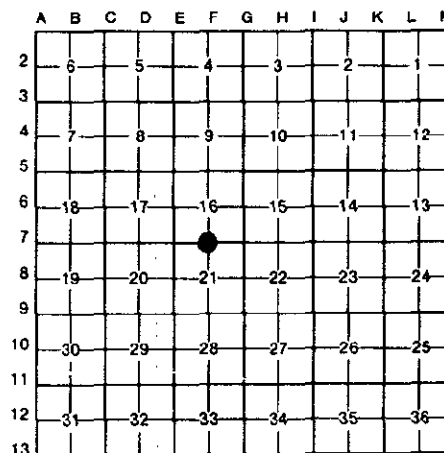
DONALD W. KIMMLIN, County Clerk  
ALGER COUNTY, MI

Register of Deeds Stamp & File Number

4. Lot No. \_\_\_\_\_, Recorded Plat \_\_\_\_\_  
5. Private Claims \_\_\_\_\_

I, Robert L. Jamros, in a field survey on June 28, 1995, 19\_\_\_\_\_, do hereby certify that under requirements of P.A. 74, Michigan P.A. of 1970, the corner points mentioned in lines 1 and 2 above were in conformance with regulations and rules therefore as required in the current manual of survey instructions of the United States Department of the Interior, Bureau of Land Management or by a decree of a Court of Law and/or that the corner points mentioned in lines 3, 4 and 5 above were in conformance with the rules of the Michigan Board of Land Surveyors or by a Decree of a Court of Law; established, re-established, monumented, re-monumented, recovered, found as expressed below:

**NOTE: Not more than 4 corners, all in the same town and range, may be recorded on this certificate.**



**A. Description of original monument and accessories and/or subsequent restoration:**

F7: PLS- Francis Coleman, DS, 1851, Set Qr. Section Post- Sugar 10", N.57 E., 6 links, Fir 14", S.74 W., 14 links. Walter w. Gleason, County Surveyor, 1914, Set iron corner on line and halfway between section corners. No references given. Record of surveys book, page 176. Alger County Records. CCI Forestry Division, Land and Timber Examination Report. T.J. McLaren, 1952, on timber cruise sheet indicates a 4" Post and Iron at corner position. Set by author unknown. No references given.

**B. Description of corner evidence found and/or method applied in restoring or reestablishing corner:**

F7: Established corner position by field survey on line at proportional distance between section corners East and West. Corner position lies 9.0 feet North of centerline of East-West dirt road. A search was made at GLO bearing tree positions, evidence has been lost. Corner position is accepted as a careful and faithful reestablishment of the position of the original corner.

**C. Description of monument for corner and accessories established to perpetuate locating the position of the corner:**

F7: Set 5/8" x 18" rebar w/ Berntsen Cap no. RBD5325 stamped to identify corner position. Established the following reference trees w/ BT signs, blazed, scribed and painted. Set PK nails for measure w/ Alum. I.D. washers in the following reference trees. Maple 8", N.44 W., 32.72 feet, " 1/4s BT ", Beech 7", N.45 E., 45.89 feet, " 1/4s BT ", Maple 4", S.34 E., 47.04 feet, " 1/4s BT ", Maple 8", S.32 W., 58.53 feet, " 1/4s BT ", Survey Marker sign on 7" Maple, North, 23.0 feet. All bearings are magnetic.

Signed by \_\_\_\_\_

Robert L. Jamros  
25849

Surveyor's Michigan License No. \_\_\_\_\_

