

Approved by Alger County  
Land Survey Remonumentation  
Peer Group Under Act 345 of  
P.A. of 1990 On 12-12-1995

SURVEY &  
MONUMENTATION

JAN 23 1996

COMMISSION

4-318

Donald W. Kinnunen  
Chairman

**LAND CORNER RECORDATION CERTIFICATE**  
Filing Requirement of Act 74, Mich. P.A. 1970

For corners in <u>Alger</u> (County)	Located In:	Corner Code #
1. Public Land Survey	T <u>49N</u> R <u>13W</u>	<u>66</u>
	T _____ R _____	_____
	T _____ R _____	_____
	T _____ R _____	_____
2. Property Controlling in Section	S _____ T _____ R _____	_____
	S _____ T _____ R _____	_____
3. Miscellaneous Property in Section	S _____ T _____ R _____	_____
	S _____ T _____ R _____	_____

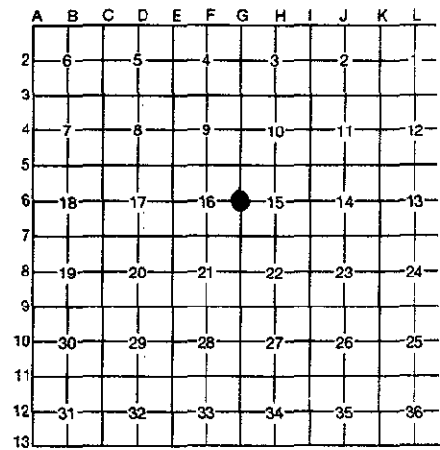
**REC'D and FILED**

DEC 20 1995  
2:45 p.m.

DONALD W. KINNUNEN County Clerk  
Register of Deeds Stamp & File Number

4. Lot No. \_\_\_\_\_, Recorded Plat \_\_\_\_\_  
5. Private Claims \_\_\_\_\_

I, Robert L. Jamros, in a field survey on July 13, 1995, 19\_\_\_\_\_, do hereby certify that under requirements of P.A. 74, Michigan P.A. of 1970, the corner points mentioned in lines 1 and 2 above were in conformance with regulations and rules therefore as required in the current manual of survey instructions of the United States Department of the Interior, Bureau of Land Management or by a decree of a Court of Law and/or that the corner points mentioned in lines 3, 4 and 5 above were in conformance with the rules of the Michigan Board of Professional Surveyors or by a Decree of a Court of Law; established, re-established, monumented, re-monumented, recovered, found as expressed below:



**NOTE: Not more than 4 corners, all in the same town and range, may be recorded on this certificate.**

**A. Description of original monument and accessories and/or subsequent restoration:**

66: PLS- Francis Coleman, DS, 1851, Set Or. Section Post- Maple 10", N.44 W., 25 links, Beech 8", S.70 E., 6 links. CCI Forestry Division, Land and Timber Examination Report. G.A. Moote, 1957, on timber cruise sheet indicates a post at corner location. No references given.

**B. Description of corner evidence found and/or method applied in restoring or reestablishing corner:**

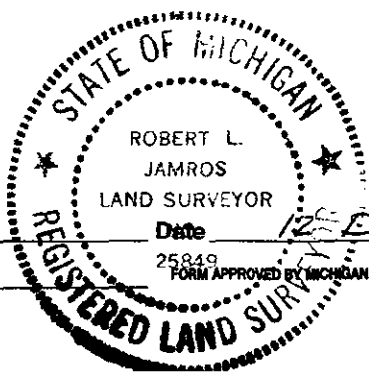
66: Established corner position by field survey on line at proportional distance between section corners North and South. Corner position lies 1.0 feet east of centerline of North-South dirt road. A search was made at GLO bearing tree positions, evidence has been lost. Corner position is accepted as a careful and faithful reestablishment of the position of the original corner.

**C. Description of monument for corner and accessories established to perpetuate locating the position of the corner:**

66: Set 5/8" x 18" rebar w/ Berntsen Cap no. R8D5325 stamped to identify corner position. Established the following reference trees w/ BT signs, blazed, scribed and painted. Set PK nails for measure w/ Alum. I.D. washers in the following reference trees. Maple 10", N.62 W., 25.87 feet, " 1/4s BT ", Beech 8", N.48 E., 44.68 feet, " 1/4s BT ", Twin Maple 4" & 6", S.59 E., 38.31 feet, " 1/4s BT ", Beech 14", S.64 W., 27.64 feet, " Ex. upper and lower blazes ", Survey Marker sign on 16" Beech, N.76 W., 19.6 feet. All bearings are magnetic.

Signed by Robert L. Jamros

Surveyor's Michigan License No. 25849



Date 12 December 1995