

Approved by Alger County
Land Survey Remonumentation
Peer Group Under Act 345 of
P.A. of 1990 On 12-12-1995

Harold W. Carlson
Chairman
For corners in
Alger

LAND CORNER RECORDATION CERTIFICATE
Filing Requirement of Act 74, Mich. P.A. 1970

STANDARD
COMMISSION

JAN 28 1996

COMMISSION

4-316

(County)	Located In:	Corner Code #
1. Public Land Survey	T <u>49N</u> R <u>13W</u>	<u>68</u>
	T _____ R _____	_____
	T _____ R _____	_____
	T _____ R _____	_____
2. Property Controlling in Section	S _____ T _____ R _____	_____
	S _____ T _____ R _____	_____
3. Miscellaneous Property in Sec.	S _____ T _____ R _____	_____
	S _____ T _____ R _____	_____

REC'D and FILED

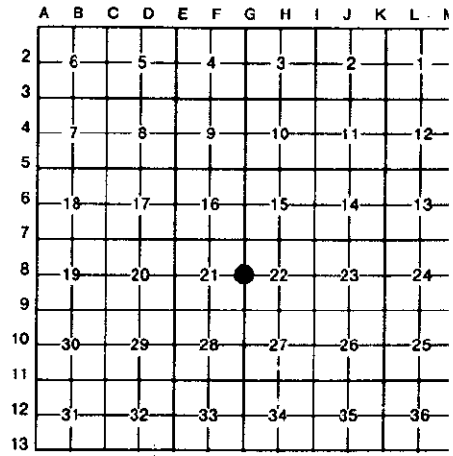
DEC 20 1995
2:45 p.m.

DONALD W. KINNUNEN, County Clerk
Register of Deeds Stamp # File Number

4. Lot No. _____, Recorded Plat _____
5. Private Claims _____

I, Robert L. Jamros, in a field survey on June 21, 1995, 19_____, do hereby certify that under requirements of P.A. 74, Michigan P.A. of 1970, the corner points mentioned in lines 1 and 2 above were in conformance with regulations and rules therefore as required in the current manual of survey instructions of the United States Department of the Interior, Bureau of Land Management or by a decree of a Court of Law and/or that the corner points mentioned in lines 3, 4 and 5 above were in conformance with the rules of the Michigan Board of Land Surveyors or by a Decree of a Court of Law; established, re-established, monumented, re-monumented, recovered, found as expressed below:

NOTE: Not more than 4 corners, all in the same town and range, may be recorded on this certificate.

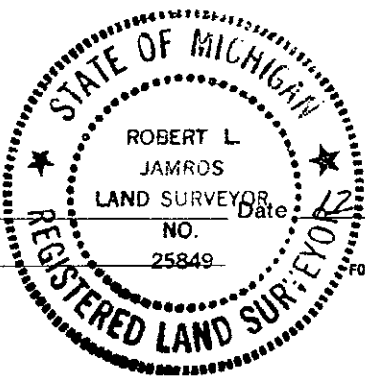


A. Description of original monument and accessories and/or subsequent restoration:
G8: PLS-Francis Coleman, DS, 1851, Set Or. Section Post- W.Pine 36', S.42 E., 47 links, Sugar 12', N.67 W., 38 links. CCI Forestry Division, Land and Timber Examination Report. Henry Carpenter, 1946, indicates on timber cruise sheet a 4" post at corner position. No references given. T.J. McLaren, 1952 through present, indicates on timber cruise sheet a 4" post and iron at 1/4 Section corner location and also at the N1/16 and S1/16 corners north and south of this corner position. No references given.

B. Description of corner evidence found and/or method applied in restoring or reestablishing corner:
G8: A search was made for 4" post and iron at corner position. Iron and post have been lost to road maintenance. Established corner position by field survey. Found 1 1/2" iron bar at North 1/16 corner and 1 5/8" axle shaft at South 1/16 corner between sections 21 and 22. Measured from BT section corner southerly to North 1/16 corner and extended line southerly of North 1/16 the measured distance to set the corner position of G8. Measurement from the corner position to the South 1/16 corner agrees well with the measurements north of corner position. Corner position falls on the west side of north-south dirt road. Found old blaze line to the east from the corner position. A search was made at GLO bearing tree positions, evidence has been lost. Corner position is accepted as a careful and faithful reestablishment of the position of the original corner.

C. Description of monument for corner and accessories established to perpetuate locating the position of the corner:
G8: Set Berntsen Mon. no. A1NB30, stamped to identify corner position. Established the following reference trees w/ BT signs, blazed, scribed and painted. Set PK nails for measure w/ Alum. I.D. washers in the following reference trees. Maple 6", S.65 E., 64.26 feet, 1/4s BT ", Maple 14", N.41 E., 92.33 feet, 1/4s BT ", Maple 12", S.62 W., 23.07 feet, 1/4s BT ", Maple 12", N.19 1/2 W., 39.37 feet, 1/4s BT ", Survey Marker sign on six foot steel post, S.75 W., 1.1 feet. All bearings are magnetic.

Signed by Robert L. Jamros
Surveyor's Michigan License No. 25849



Date December 1995