

Approved by Alger County
 Land Survey Remonumentation
 Peer Group Under Act 345 of
 P.A. of 1990 On 5-18-1994

LAND CORNER RECORDATION CERTIFICATE
 Filing Requirement of Act 74, Mich. P.A. 1970

4-211

Robert L. Jamros
 Chairman
 For corners in

Alger (County)	Located In:	Corner Code #
1. Public Land Survey	T 49N R 13W	15
	T _____ R _____	_____
	T _____ R _____	_____
	T _____ R _____	_____
2. Property Controlling in Section	S _____ T _____ R _____	_____
	S _____ T _____ R _____	_____
3. Miscellaneous Property in Sec.	S _____ T _____ R _____	_____
	S _____ T _____ R _____	_____

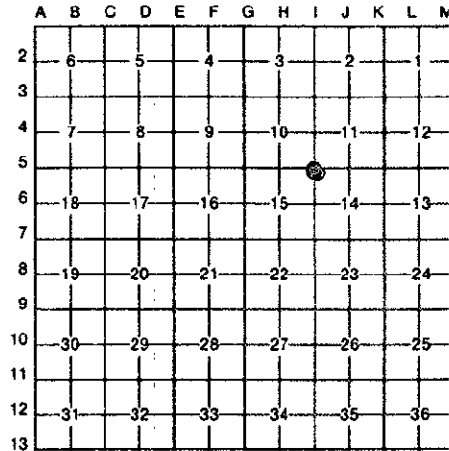
Recorded May 26, 1994
 at 8:00 o'clock A. M., and
 Recorded in Liber 4 of Corner Rec.
 on Page 211

Don W. Kimmman
 Alger County Register of Deeds

Register of Deeds Stamp & File Number

4. Lot No. _____, Recorded Plat _____
 5. Private Claims _____

I, Robert L. Jamros, in a field survey on October 02, 1993, 19_____, do hereby certify that under requirements of P.A. 74, Michigan P.A. of 1970, the corner points mentioned in lines 1 and 2 above were in conformance with regulations and rules therefore as required in the current manual of survey instructions of the United States Department of the Interior, Bureau of Land Management or by a decree of a Court of Law and/or that the corner points mentioned in lines 3, 4 and 5 above were in conformance with the rules of the Michigan Board of Land Surveyors or by a Decree of a Court of Law; established, re-established, monumented, re-monumented, recovered, found as expressed below:



NOTE: Not more than 4 corners, all in the same town and range, may be recorded on this certificate.

A. Description of original monument and accessories and/or subsequent restoration:

I5: P.L.S. - Francis Coleman, DS, 1841. Set post corner of Secs. 10, 11, 14 and 15. Sugar 10, N.32 E., 23 links. Sugar 12, S.74 W., 27 links. C.C.I. Forestry, btwn. 1947 and 1968. Noted on Land and Timber Examination Report. Sugar 8T and post.

B. Description of corner evidence found and/or method applied in restoring or reestablishing corner:

I5: From U.S.G.S. Quad map determined corner location to be 200 feet +/- N. of E-W sand track road. Began at inter. of the Whitewash Road and E-W sand track road in Section 15 and by odometer reached blazed Section line crossing between 14 and 15. Followed blaze line North to corner location. Found 4" squared top post and original BT, Maple 26" alive and standing in S.74 W., 27 links with scribing visible. Also found two other bearing trees from another perpetuation. Installed monument in post point hole and established two new reference trees, and is accepted as a careful and faithful perpetuation of the position of the original corner. Installed found 4" squared top post next monument. Corner lies in open mixed timber 100' +/- Ely of sand driveway to a camp.

C. Description of monument for corner and accessories established to perpetuate locating the position of the corner:

I5: Installed 2 1/4" Aluminum monument w/ 3 1/4" Aluminum cap stamped to I.D. corner position. Est. reference trees w/BT signs, blazed, scribed and painted. Set PK nails for measuring w/brass I.D. washers in the following reference trees. Exist - Maple 12", S.53 E., 23.74 ft., w/blazes. Exist - Maple 18", N.08 W., 13.94 ft., w/blazes. Beech 18", S.28 W., 38.96 ft., 'S15-BT'. Beech 20", N.75 1/2 E., 33.75 ft., 'S11-BT'. Sur. Marker sign, N.51 E.,

Signed by Robert L. Jamros Date 2 May, 1994
 Surveyor's Michigan License No. 25849