

DEC 27 1999

Approved by Alger County Land Survey Re-monumentation Peer Group Under Act 845 of P.A. of 1990 On 12-8-1999

Muel Carlson
Chairman

05-148

For corners in SECTION

LAND CORNER RECORDATION CERTIFICATE
Filing Requirement of Act 74, Mich. P.A. 1970

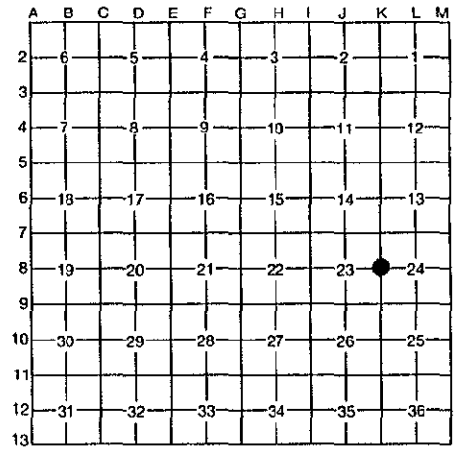
ALGER (County)	Located In:	Corner Code #
1. Public Land Survey	T 49N R 13W	K8
	T R	
	T R	
	T R	
2. Property Controlling in Section	S T R	
	S T R	
3. Miscellaneous Property in Section	S T R	
	S T R	

FILED
TIME 1:30 p.m.

DEC 15 1999

DONALD W. KINNUNEN
REGISTER OF DEEDS
ALGER COUNTY, MI
Register of Deeds Stamp & File Number

4. Lot No. _____, Recorded Plat
5. Private Claims _____



I, Robert L. Janros, in a field survey on June 22, 1999, 19_____, do hereby state that under requirements of P.A. 74, Michigan P.A. of 1970, the corner points mentioned in lines 1 and 2 above were in conformance with regulations and rules therefore as required in the current manual of survey instructions of the United States Department of the Interior, Bureau of Land Management or by a decree of a Court of Law and/or that the corner points mentioned in lines 3, 4 and 5 above were in conformance with the rules of the Michigan Board of Land Surveyors or by a Decree of a Court of Law; established, re-established, monumented, _____ recovered, found as expressed below:

NOTE: Not more than 2 corners, all in the same town and range, may be recorded on this certificate.

A. Description of original monument and accessories and/or subsequent restoration:

K8: PLS * Francis Colman, DS, 1851. * Set quarter section post. * W.Pine 6", N.72 E., 22 links. * Hemlock 8", S.44 W., 16 links. **** Michigan Department of Conservation, Forestry Division. * Billy D. Buckler, RLS, 1960. * Corner position set midway and on line between section corners. * Set 1" iron pipe with 4" brass cap. * 38" W.Pine stub (1/4s NBT) S.30 W., 173 links. * 34" W.Pine stub (1/4s NBT) N.64 E., 124 links. * Recorded in Liber 2, Page 100, Alger County Corner Records. **** No other subsequent restoration of record.

B. Description of corner evidence found and/or method applied in restoring or reestablishing corner:

K8: Located corner by calculated position and standard field survey methods and found corner monument destroyed, removed and placed under W.Cherry tree 8 feet Westerly of corner position. Reference accessories of 1960 report found in good condition with scribing and notch still visible. * Established corner position from existing references and established additional references. * Corner position as reestablished lies 0.80 feet west of line and 3.37 feet south of midpoint between section corners 1/2 mile south and 1/2 mile north. * Set new monument at the restored corner position and accepted as the best available evidence of the position of the original corner.

C. Description of monument for corner and accessories established to perpetuate locating the position of the corner:

K8: Set 2 1/2"x30" Berntsen aluminum monument No. A1NB30 with 3 1/4" aluminum cap stamped to identify corner position. * Renewed existing references with BT signs and paint. * Established additional references with BT signs, paint, blazed and scribed. * Set PK nails for measure with aluminum I.D. washers in the following: Existing - 38" W.Pine stub, S.33 W., 116.28 feet. * Existing - 34" W.Pine stub, N.71 E., 81.85 feet. * J.Pine 14", S.57 E., 28.16 feet, "1/4s BT". * J.Pine 14", N.18 E., 48.35 feet, "1/4s BT". * Survey marker sign on 6 foot steel post, South, 1.0 feet. * All bearings are magnetic.

Signed by *Robert L. Janros* Date Dec 15 1999
Surveyor's Michigan License No. 25849

