

LAND CORNER RECORDATION CERTIFICATE

FILING REQUIREMENT OF ACT 74, MICH. P.A. 1970
 Alger Co. Four Corners

FOR CORNERS OF--	LOCATED IN--	CORNER CODE NUMBER
1. PUBLIC LAND SURVEY	T. 49 N. R. 13 E.	F-2, 12, Sec. 4 11, Sec. 4 - 15, Sec. 4
2. PROPERTY CONTROLLING IN SECTION	T. 49 N. R. 13 E.	
3. MISCELLANEOUS PROPERTY IN SECTION	T. N. R. E.	
4. LOT NO.	RECORDED PLAT	
5. PRIVATE CLAIMS		

REGISTER OF DEEDS STAMP AND FILING NUMBER

I, Billy D. Buckler do hereby certify that under requirements of P.A. 74, Michigan P.A. of 1970, the corner points mentioned in lines 1 and 2 above (identified with circles on index code diagram--over) were, in a field survey on 2-9 1973, established, re-established, monumented, re-monumented, recovered or restored as expressed below and in conformance with regulations and rules therefore as required in the current manual of survey instructions of the United States Department of the Interior, Bureau of Land Management or by a decree of a court of law. Furthermore, that the corner points mentioned in lines 3, 4 and 5 above were, in a field survey on 19, found, recovered, restored, established or re-established as expressed below and in conformance with the rules of the Michigan State Board of Registration for Land Surveyors or, by a Decree of a Court of law:

A. Description of original monument and accessories and/or subsequent restoration:

- F-2 Center Corner, Sec. 4
- 12, Sec. 4 South 1/16 Corner, Sec. 4.
- 11, Sec. 4 S.W. 1/16 Corner, Sec. 4.
- 15, Sec. 4 West 1/16 Corner, Sec. 4.

B. Description of corner evidence found and/or method applied in restoring or re-establishing corner:

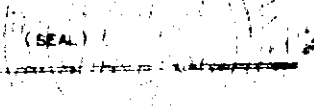
- F-2 Found Cedar Post, set by Ed Swan, Land Surveyor, 1950. Position checks with survey map by Swan.
- 12, Sec. 4 Placed center midway and on line bet. Center Corner to North and 1/4 cor to South
- 11, Sec. 4 Placed corner at intersection of lines, quartering the South-West Quarter Section. Found woodstake by T. A. Beandrie, 5.5' North and 4.3' East of Corner.
- 15, Sec. 4 Placed Corner equidistant on this half mile.

C. Description of monument for corner and accessories established to perpetuate locating the position of the corner:
 Placed 1" pipe with 4" aluminium cap at all corners.

- F-2 Which is on North bank of Sucker River. No new witnesses available.
- 12, Sec. 4 Bearings: 8" W. Pine, N10°W, 46.7' and 8" Apple, N17°W, 50.1'
- 11, Sec. 4 Bearings: 8" Soft Maple, S88°E, 33.8' and 8" Soft Maple, S29°E, 43.8'
- 15, Sec. 4 Bearings: 8" Hard Maple, N63°E, 9.5' and 8" Y. Birch, S17°W, 12.8'

SIGNED BY Billy D. Buckler DATE 9-25-73

SURVEYOR'S MICHIGAN REGISTRATION NO. 8887



FOR STATE AND UNITED STATES AGENCIES:

SIGNED BY _____ DATE _____

APPROVED AND SIGNED BY _____ DATE _____

SURVEYOR'S MICHIGAN REGISTRATION NO. _____