

MICHIGAN
DEPARTMENT OF CONSERVATION
FORESTRY DIVISION

LAND CORNER RECORD

T. 49N N. R. 15W

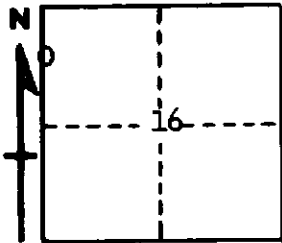
Alger COUNTY

DESCRIPTION OF CORNER Witness corner to meander corner between Secs. 16-17

CORNER MONUMENT 1" pipe with 4" aluminum cap.

DATE MONUMENT PLACED AND WITNESSED 8-17-62

WITNESSES TO CORNER..... 13" W. Pine (W.C. BT) East 162 chains



CIRCLE CORNER REGISTERED

12" W. Birch (W.C. BT) N77°W , 45 chains

AND

DESCRIPTION IN DETAIL AS TO HOW CORNER WAS LOCATED AND IDENTIFIED OR RESTORED.

Witness corner placed 3 chains south of position of Meander Corner which was established by extending a line through 1/4 corner and the section corner to south.

Note: This embankment along Lake Superior has moved about 3 chains inland due to wind and ice action, since the original survey.

SURVEYOR'S SEAL

SIGNED Billy D. Buckler DATE Feb. 28, 1963
REGISTERED LAND SURVEYOR
Billy D. Buckler