

ALLEGAN COUNTY  
REMONUMENTATION

APR 25 1995

COMMISSION

ALLEGAN COUNTY REMONUMENTATION  
LAND CORNER RECORDATION CERTIFICATE  
Filing Requirement of Act 74, Mich. P.A. 1970

For corners in

| Allegan<br>(County)                   | Located In:              | Corner Code #           |
|---------------------------------------|--------------------------|-------------------------|
| 1. Public Land Survey                 | T <u>1N</u> R <u>13W</u> | <u>G-7</u>              |
|                                       | T _____ R _____          | <u>Sec. 15, 16,</u>     |
|                                       | T _____ R _____          | <u>21 &amp; 22 Cor.</u> |
|                                       | T _____ R _____          | <u>Trowbridge</u>       |
| 2. Property Controlling<br>in Section | S _____ T _____ R _____  | <u>Twp.</u>             |
| 3. Miscellaneous<br>Property in Sec.  | S _____ T _____ R _____  | _____                   |
|                                       | S _____ T _____ R _____  | _____                   |

1994 DEC 30 PM 12:18  
 REGISTER OF DEEDS  
 ALLEGAN COUNTY MICHIGAN  
*Gregory A. Colette*

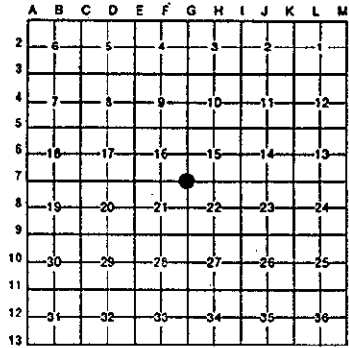
FILED

Register of Deeds Stamp & File Number

4. Lot No. \_\_\_\_\_, Recorded Plat \_\_\_\_\_  
 5. Private Claims \_\_\_\_\_

I, Kirk Van Order, in a field survey on May 25, 19 94, do hereby certify that under requirements of P.A. 74, Michigan P.A. of 1970, the corner points mentioned in lines 1 and 2 above were in conformance with regulations and rules therefore as required in the current manual of survey instructions of the United States Department of the Interior, Bureau of Land Management or by a decree of a Court of Law and/or that the corner points mentioned in lines 3, 4 and 5 above were in conformance with the rules of the Michigan Board of Land Surveyors or by a Decree of a Court of Law; established, re-established, monumented, re-monumented, recovered, found as expressed below:

NOTE: Not more than 4 corners, all in the same town and range, may be recorded on this certificate.



A. Description of original monument and accessories and/or subsequent restoration:

- G-7  
 \*GLO set post at 80.00 chains North of G-9.  
 20" Sugar S85°W 38 links  
 18" Sugar N35°E 31 links

APPROVED REMONUMENTATION CORNER  
 P.A. 345 OF 1990  
 ALLEGAN COUNTY  
 DATE APPROVED 6-14-94  
 COUNTY REP. Kirk Van Order

(Continued on back of sheet)

B. Description of corner evidence found and/or method applied in restoring or reestablishing corner:

- G-7  
 Fd. 1" x 22" steel pipe using info. from Ratekin and Van Order surveys. Did not find stone. Road appears to have been cut to the West and filled to the East to decrease the grade. Stone may have been removed due to road construction. Dug trench 2' North of found pipe but could not locate stone.  
 Nail in W side RR Tie corner fence post S 26.92'  
 Nail in NE side 18" Maple SE 28.92'  
 Nail in SE side 7" Maple N,NE 32.02'  
 Nail in 9" Ash NW 29.80'  
 C/L Gravel Road N 5.00'  
 And is accepted as a careful and faithful perpetuation of the position of the original corner.  
 Peer Group approved 6-14-94.

C. Description of monument for corner and accessories established to perpetuate locating the position of the corner:

- G-7  
 Replaced steel pipe with a standard Allegan Co. Remon. monument (3/4" x 36" steel rod w/red cap #23520)  
 Nail & Remon. tag in NE side 18" Maple SE 28.98'  
 Nail & Remon. tag in NE side 12" Ash S,SE 42.33'  
 Nail & Remon. tag in SW side 15" Ash N,NW 36.12'  
 Nail & Remon. tag in SE side Twin 15" Maple NE 55.03'

Signed by *Kirk Van Order* Date 12-30-94

Surveyor's Michigan License No. 23520

0005 PAGE 158

Page 1 of 2

FORM APPROVED BY MICHIGAN STATE BOARD OF LAND SURVEYORS, JAN. 28, 1971  
 REVISED MAY 14, 1975  
 REVISED JAN., 1983

Section A (continued from Page 1)G-7

•Old survey notes show at corner a pointed sand & flint stone, 12" or 14" long w/"X" on flat side, point up.

8" Elm N  
14" Sugar Maple SW

Other ties show:

|            |      |       |
|------------|------|-------|
| 14" Elm    | N,NW | 22'   |
| Fence Post | N    | 30.4' |
| Fence Post | S    | 37.5' |
| 6" Maple   | SE   | 29'   |

•Ratekin witness card shows

3/4" Pipe, SE Cor., Sec. 16

|                  |   |       |
|------------------|---|-------|
| RR Tie Cor. Post | S | 26.5' |
|------------------|---|-------|

|          |       |       |
|----------|-------|-------|
| 9" Maple | S35°E | 28.7' |
|----------|-------|-------|

|           |       |       |
|-----------|-------|-------|
| 22" Maple | S60°W | 48.1' |
|-----------|-------|-------|

|          |       |       |
|----------|-------|-------|
| 3" Maple | S30°W | 34.9' |
|----------|-------|-------|

•Ratekin survey (V-16-4) 3-30-1972 shows same witnesses above

•K.V.O. survey (93-2974) 8-18-1993 shows a 1" pipe found

|                                         |   |        |
|-----------------------------------------|---|--------|
| Nail in W side RR Tie corner fence post | S | 26.92' |
|-----------------------------------------|---|--------|

|                           |    |        |
|---------------------------|----|--------|
| Nail in NE side 18" Maple | SE | 28.92' |
|---------------------------|----|--------|

|                          |      |        |
|--------------------------|------|--------|
| Nail in SE side 7" Maple | N,NE | 32.02' |
|--------------------------|------|--------|

|                |    |        |
|----------------|----|--------|
| Nail in 9" Ash | NW | 29.80' |
|----------------|----|--------|

|                 |   |       |
|-----------------|---|-------|
| C/L Gravel Road | N | 5.00' |
|-----------------|---|-------|