

RF

MAR 07 2000

ALLEGAN COUNTY REMONUMENTATION

LAND CORNER RECORDATION CERTIFICATE

SECTION

Filing Requirement of Act 74, Mich. P.A. 1970

For corners in

ALLEGAN COUNTY..... Located in: ..LEE..... Township Corner Code #

- 1. Public Land Survey T.1 N.. R.15 W. ....H-3.....
2. Property Controlling S..... T..... R..... NI/4 POST SEC. 10
3. Miscellaneous S..... T..... R.....
4. Lot No. ...., Recorded Plat .....
5. Private Claims.....

Handwritten signature and text: Register of Deeds, ALLEGAN COUNTY, MI

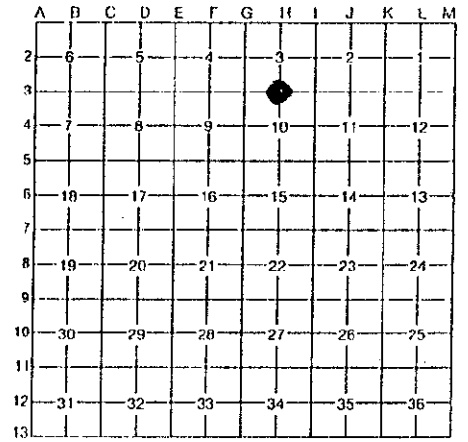
00 FEB - 1 AM 8:41

FILED

1100007 MAR 28

Register of Deeds Stamp & File Number

I, .... George J. Mitchell....., in a field survey on ...September 22, 1999.... do hereby certify that under requirements of P.A. 74, Michigan P.A. of 1970, the corner points mentioned in lines 1 and 2 above were in conformance with regulations and rules therefore as required in the current manual of survey instructions of the United States Department of the Interior, Bureau of Land Management or by decree of a Court of Law and/or that the corner points mentioned in lines 3, 4, and 5 above were in conformance with the rules of the Michigan Board of Land Surveyors or by decree of a Court of Law, established, re-established, monumented, re-monumented, recovered, found as expressed below:



NOTE: Not more than 4 corners, all in the same town & range, may be recorded on this certificate.

A. Description of original monument and accessories and/or subsequent restoration:

H-3

SEE SHEET 2 OF 2 FOR CORNER HISTORY

B. Description of corner evidence found and/or method applied in restoring or reestablishing corner:

FOUND 1" IRON BAR IN MONUMENT BOX FROM ITEMS 3, 4, & 6 OF CORNER HISTORY, AND IS ACCEPTED AS A CAREFUL AND FAITHFUL PERPETUATION OF THE POSITION OF THE ORIGINAL CORNER.

SET ALLEGAN COUNTY STANDARD 3/4" BY 24" IRON PIN WITH REMON CAP IN MONUMENT BOX.

THIS CORNER WAS APPROVED BY THE ALLEGAN COUNTY SURVEYORS PEER GROUP ON OCTOBER 12, 1999

C. Description of monument for corner and accessories established to perpetuate locating the position of the corner:

NORTH QUARTER POST, SECTION 10, TOWN 1 NORTH, RANGE 15 WEST

- A.C. REMON TAG & NAIL IN WEST SIDE OF POWER POLE AZ. 010° 33.00 FEET
A.C. REMON TAG & NAIL IN SOUTHWEST SIDE OF 20" OAK AZ. 135° 66.10 FEET
A.C. REMON TAG & NAIL IN NORTHWEST SIDE OF 16" OAK AZ. 225° 76.05 FEET
A.C. REMON TAG & NAIL IN SOUTHWEST SIDE OF 16" OAK AZ. 295° 145.90 FEET

APPROVED REMONUMENTATION CORNER P.A. 345 OF 1990 ALLEGAN COUNTY DATE APPROVED OCT. 12, 1999. COUNTY REP. [Signature]

Signed by George J. Mitchell Date 10/28/99

Surveyor's Michigan License No. ....19618.....



R51

MAR 07 2000

GOVERNMENT CORNER HISTORY

NORTH QUARTER POST, SECTION 10  
TOWN 1 NORTH, RANGE 15 WEST

SECTION

H-3

- 1. C. BRITAIN D.S. 1831 SET POST AT 40.00 CHAINS WEST OF NE CORNER  
PINE 36 S47E 20 LKS  
BEECH N58W 28 LKS
- 2. OLD NOTES (NO DATE) STAKE  
2648' SOUTH TO CENTER
- 3. D. MIDDLETON 1971 L.C.R.C. L. 001, P. 165  
1-1/2" PIPE  
10" BLACK OAK NE 6.5'  
15" B. OAK NNW 28.8'  
14" B. OAK SSE 36.9'  
14" B. OAK SSE 19.4'  
PLAT MON. SW 47'  
CENTERLINE TRAIL S 10'
- 4. D. RATEKIN 1972 SAME AS L.C.R.C.
- 5. B. ANDRESS 1992 FD IRON  
NO WITNESSES
- 6. G. MITCHELL 1993 FD IRON BAR  
16" OAK S45E 65.48'  
6" OAK N45W 54.31'  
POWER POLE N15E 32.66'  
PLAT MON SW 47.0'  
H-3 TO H-4 MEASURED 2652.60'
- 7. S. PITTS 1994 IRON  
NO WITNESSES  
H-3 TO H-4 SHOWS 2652.54'

LIBR0007 PAGE329