

LAND CORNER RECORDATION CERTIFICATE
Filing Requirement of Act 74, Mich. P.A. 1970

For corners in
ALLEGAN

(County)

Located In:

Corner Code --#

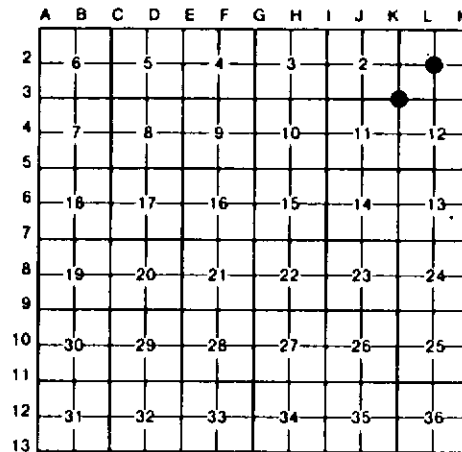
- | | | | | | |
|------------------------------------|---|-----------|---|------------|-----------|
| 1. Public Land Survey | T | <u>IN</u> | R | <u>15W</u> | <u>K3</u> |
| | T | <u>IN</u> | R | <u>15W</u> | <u>L2</u> |
| | T | _____ | R | _____ | _____ |
| | T | _____ | R | _____ | _____ |
| 2. Property Controlling in Section | S | _____ | T | _____ | R |
| | S | _____ | T | _____ | R |
| 3. Miscellaneous Property in Sec. | S | _____ | T | _____ | R |
| | S | _____ | T | _____ | R |

Register of Deeds Stamp & File Number

4. Lot No. _____, Recorded Plat _____
5. Private Claims _____

I, GARY C. BILOW, in a field survey on April 10, 1991, 19_____, do hereby certify that under requirements of P.A. 74, Michigan P.A. of 1970, the corner points mentioned in lines 1 and 2 above were in conformance with regulations and rules therefore as required in the current manual of survey instructions of the United States Department of the Interior, Bureau of Land Management or by a decree of a Court of Law and/or that the corner points mentioned in lines 3, 4 and 5 above were in conformance with the rules of the Michigan Board of Land Surveyors or by a Decree of a Court of Law; established, re-established, monumented, re-monumented, recovered, found as expressed below:

NOTE: Not more than 4 corners, all in the same town and range, may be recorded on this certificate.



A. Description of original monument and accessories and/or subsequent restoration:

(K-3) ORIGINAL CORNER POST ESTABLISHED BY U.S. GOVERNMENT DEPUTY SURVEYOR C. BRITIAN, 1831. ACCESSORIES: PINE 14 S62W 13, PINE 12 N42W 26. CORNER SHOWN AS "STAKE" IN PERSONAL RECORD OF COUNTY SURVEYOR HUGH MacDOUGALL (ca. 1900). NO ACCESSORIES ARE NOTED. ALSO SHOWN ARE STAKES AT J-3 (2660.5' WEST), L-3 (2650' EAST), AND THE 2 1/8 CORNERS MIDWAY BETWEEN (1330.25' WEST AND 1325' EAST).
 (L-2) CORNER NOT ESTABLISHED IN ORIGINAL SURVEY. PERSONAL RECORD OF FORMER ALLEGAN COUNTY SURVEYOR HUGH MacDOUGALL (ca. 1900) SHOW "IRON" AT CORNER. NO ACCESSORIES ARE NOTED. FOUND NO RECORD OF METHODS OR PROCEDURE USED TO ESTABLISH SAID IRON. CORNER NOT PREVIOUSLY RECORDED UNDER ACT 74, P.A. 1970 BUT IS REFERRED TO IN LAND CORNER CERTIFICATE FOR L-1 IN LIBER 3, PAGE 364.

B. Description of corner evidence found and/or method applied in restoring or reestablishing corner:

(K-3) ORIGINAL POST AND ACCESSORIES NOT RECOVERED. I EXCAVATED TWO PITS IN THE CORNER AREA, BOTH APPROXIMATELY 9' E-W x 4' N-S x 4.0' DEEP AND FOUND NOTHING. THE FIRST PIT WAS CENTERED AT A POINT AT SAME BEARING AND DISTANCE FROM L-3 AS L-3 IS FROM M-3, THE SECOND AT THE LOCATION SUBSEQUENTLY MONUMENTED. I RECOVERED THE REMAINS OF AN OLD FENCE LINE EXTENDING NORTH FROM THE EAST 1/8 CORNER BETWEEN SECTIONS 2 AND 11 AND I REESTABLISHED THE CORNER AT A DISTANCE EAST OF THIS FENCE EQUAL TO THE DISTANCE BETWEEN MONUMENTED J-3 AND THE FENCE, AND EQUIDISTANT BETWEEN MONUMENTED CORNERS K-2 AND K-4. THIS POSITION FALLS ONLY 0.3' WEST OF THE DOUBLE PROPORTIONATE POSITION (BASED ON U.S. RECORD) AND 3' EAST OF THE PROPORTIONATE EASTING BETWEEN J-3 AND L-3 FROM MacDOUGALL'S MEASUREMENTS. AT THE POSITION FOR THE CORNER, I SET A 1/2"x36" REBAR ENCASED IN A 4" DIAMETER CONCRETE CYLINDER CAPPED WITH A CAST ALUMINUM MICHIGAN DEPARTMENT OF NATURAL RESOURCES TABLET 7" BELOW THE GRAVEL SURFACE OF 110th AVENUE.
 (L-2) ESTABLISHED CORNER AT THE INTERSECTION OF STRAIGHT LINES CONNECTING OPPOSITE 1/4 CORNERS (ALL RECORDED THIS DATE), AND MONUMENTED THE POSITION WITH A 1/2"x36" REBAR ENCASED IN A 4" DIAMETER CONCRETE CYLINDER CAPPED WITH A CAST ALUMINUM MICHIGAN DEPARTMENT OF NATURAL RESOURCES TABLET 6" BELOW THE GRAVEL SURFACE OF 49th STREET. FROM THE CORNER MONUMENTED, I FOUND A 1/2" IRON PIPE, ACCEPTED BY OTHERS AS THE CORNER, 11.71' NORTH AND 3.65' WEST.

C. Description of monument for corner and accessories established to perpetuate locating the position of the corner:

K-3 SET CONCRETE MONUMENT WITH MDNR CAP	L-2 SET CONCRETE MONUMENT WITH MDNR CAP
S70E 88.43' SET NAIL AND MDNR TAG IN NORTH FACE 14" THIN OAK	S45E 28.20' SET NAIL AND MDNR TAG IN NE FACE OF 22" OAK; S76W 32.69' SET NAIL AND MDNR TAG IN SE FACE 26" OAK; N26W 64.42' SET NAIL AND MDNR TAG IN NE FACE 28" OAK; N70E 21.50' SET NAIL AND MDNR TAG IN SOUTH FACE 23" OAK; EAST 33.00' SET 1/2" REBAR WITH PLASTIC CAP #26453; WEST 33.00' SET 1/2" REBAR WITH PLASTIC CAP #26453
S30E 59.81' SET NAIL AND MDNR TAG IN WEST FACE 4" PINE	
S65W 70.57' SET NAIL AND MDNR TAG IN NORTH FACE WOOD POST	
NORTH 23' STOP SIGN POST	
NORTH 7' CENTERLINE OF 110th AVENUE	
WEST 29' CENTERLINE OF 50th STREET.	



Signed by Gary C. BiLow Date 8/1/91
 Surveyor's Michigan License No. 26453