

ALLEGAN COUNTY REMONUMENTATION
 LAND CORNER RECORDATION CERTIFICATE
 Filing Requirement of Act 74, Mich. P.A. 1970

1995 DEC 14, 11 2:32
 REGISTER OF DEEDS
 F.I.L.F.D.

For corners in
ALLEGAN
(County)

Located In. Corner Code #

1. Public Land Survey	T <u>2N</u> R <u>13W</u>	<u>E-13</u>
	T ___ R ___	<u>ALLEGAN</u>
	T ___ R ___	_____
	T ___ R ___	_____
2. Property Controlling in Section	S ___ T ___ R ___	_____
	S ___ T ___ R ___	_____
3. Miscellaneous Property in Sec.	S ___ T ___ R ___	_____
	S ___ T ___ R ___	_____

**SURVEY &
 REMONUMENTATION**

APR 29 1996

COMMISSION

Lot No. _____, Recorded Plat _____
 Private Claims _____

Register of Deeds Stamp & File Number

A	B	C	D	E	F	G	H	I	J	K	L	M
2	5	5	4	3	2							
3												
4	7	8	9	10	11	12						
5												
6	16	17	16	15	14	13						
7												
8	19	20	21	22	23	24						
9												
10	29	29	28	27	26	25						
11												
12	31	32	33	34	35	36						
13												

I, DONALD R. PITTS JR., in a field survey on JULY 27, 1995
 do hereby certify that under requirements of P.A. 74, Michigan P.A. of 1970, the corner points mentioned in lines 1 and 2 above were in conformance with regulations and rules therofore as required in the current manual of survey instructions of the United States Department of the Interior, Bureau of Land Management or by a decree of a Court of Law and/or that the corner points mentioned in lines 3, 4 and 5 above were in conformance with the rules of the Michigan Board of Land Surveyors or by a Decree of a Court of Law; established, re-established, monumented, re-monumented, recovered, found as expressed below:

NOTE: Not more than 4 corners, all in the same town and range, may be recorded on this certificate.

A. Description of original monument and accessories and/or subsequent restoration:

G.L.O. SET POST CIRCA 1960 COUNTY SURVEYOR NOTES
 ELM 11 N 56 E 48 STONE
 ELM 15 N 45 W 59 20" MAPLE NW 75.6'

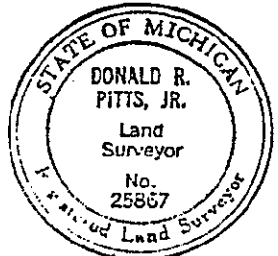
B. Description of corner evidence found and/or method applied in restoring or reestablishing corner:

NO PHYSICAL CORNER FOUND
 CALCULATED POSITION AT G.L.O. JOG 174.90' EAST OF E-1, T1N, R13W ON LINE F-13 TO D-13, T2N, R13W
 DID NOT SET CORNER DUE TO SWAMPY TERRAIN
 TRAVERSED 5239' EAST AND 2831' WEST
 APPROVED BY THE ALLEGAN CO. REMON PEER GROUP JULY 11, 1995, AND IS ACCEPTED AS A CAREFUL AND FAITHFUL PERPETUATION OF THE POSITION OF THE ORIGINAL CORNER.

APPROVED REMONUMENTATION CORNER
 P.A. 345 OF 1990
 ALLEGAN COUNTY
 DATE APPROVED 7-11-95
 COUNTY REP. Donald R. Pitts, Jr.

C. Description of monument for corner and accessories established to perpetuate locating the position of the corner:

SEE BACK OF CERTIFICATE



Signed by Donald R. Pitts, Jr. Date 30 August 1995
 Surveyor's Michigan License No. 25867

FORM APPROVED BY MICHIGAN STATE BOARD OF LAND SURVEYORS, JAN. 29, 1971
 REVISED MAY 11, 1975
 REVISED JAN., 1983

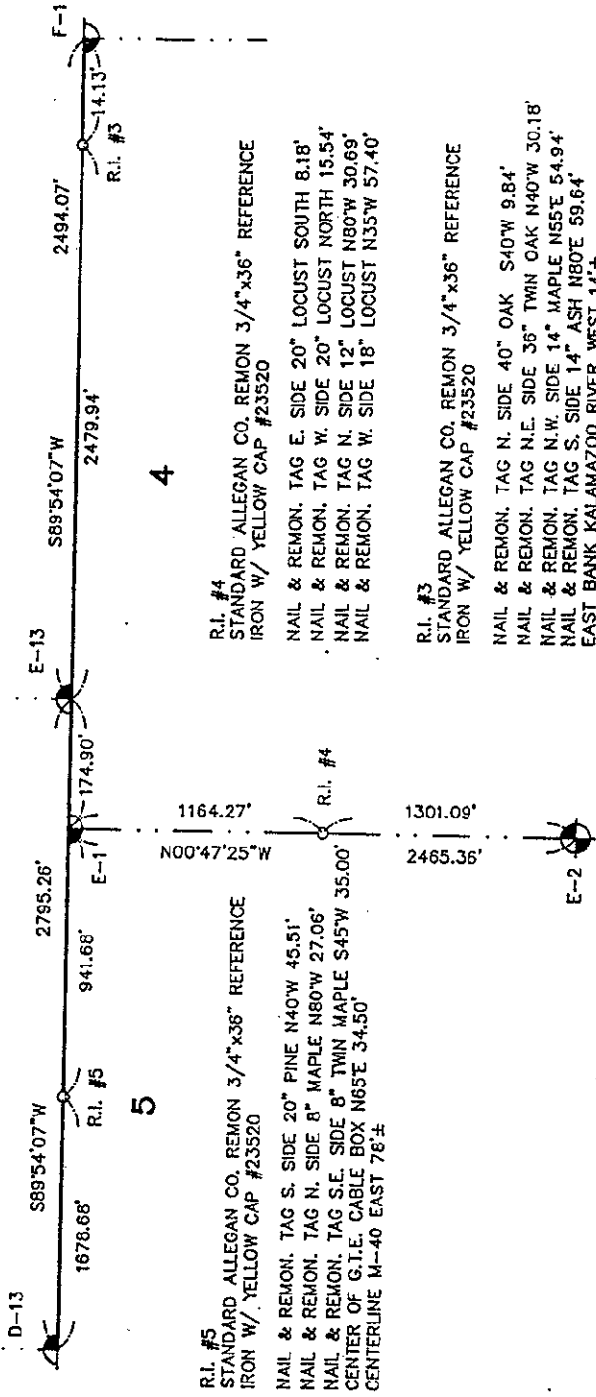
T. 2 N., R. 13 W.

32



NOT TO SCALE

33



R.I. #5
STANDARD ALLEGAN CO. REMON 3/4"x36" REFERENCE
IRON W/ YELLOW CAP #23520
NAIL & REMON. TAG S. SIDE 20" PINE N40°W 45.51'
NAIL & REMON. TAG N. SIDE 8" MAPLE N80°W 27.06'
NAIL & REMON. TAG S.E. SIDE 8" TWIN MAPLE S45°W 35.00'
CENTER OF G.I.E. CABLE BOX N65°E 34.50'
CENTERLINE M-40 EAST 78'±

R.I. #4
STANDARD ALLEGAN CO. REMON 3/4"x36" REFERENCE
IRON W/ YELLOW CAP #23520
NAIL & REMON. TAG E. SIDE 20" LOCUST SOUTH 8.18'
NAIL & REMON. TAG W. SIDE 20" LOCUST NORTH 15.54'
NAIL & REMON. TAG N. SIDE 12" LOCUST N80°W 30.69'
NAIL & REMON. TAG W. SIDE 18" LOCUST N35°W 57.40'

R.I. #3
STANDARD ALLEGAN CO. REMON 3/4"x36" REFERENCE
IRON W/ YELLOW CAP #23520
NAIL & REMON. TAG N. SIDE 40" OAK S40°W 9.84'
NAIL & REMON. TAG N.E. SIDE 36" TWIN OAK N40°W 30.18'
NAIL & REMON. TAG N.W. SIDE 14" MAPLE N55°E 54.94'
NAIL & REMON. TAG S. SIDE 14" ASH N80°E 59.64'
EAST BANK KALAMAZOO RIVER WEST 14'±

T. 1 N., R. 13 W.