

SURVEY & REMONUMENTATION

7/2

APR 07 1998

**ALLEGAN C. REMONUMENTATION
LAND CORNER RECORDATION CERTIFICATE
Filing Requirement of Act 74, Mich. P.A. 1970**

For Allegan County

<u>ALLEGAN</u> (County)	Located in:	Corner Code #
1. Public Land Survey	T-2N R-13W	✓ F-1
	T R	N1/4 SEC. 4
	T R	ALLEGAN TWP
	T R	
2. Property Controlling in Section	S T R	
	S T R	
3. Miscellaneous Property in Sec.	S T R	
	S T R	
4. Lot No. _____, Recorded Plat _____		
5. Private Claims _____		

REGISTER OF DEEDS
 ALLEGAN COUNTY MICH.
 98 JAN 21 PM 1:17
 FILED
 Register of Deeds Stamp & File Number

1. ARTHUR W. BRINTNALL, in a field survey on 17 NOV '97 do hereby state that under requirements of P.A. 74, Michigan P.A. of 1970, the corner points mentioned in lines 1 and 2 above were in conformance with regulations and rules therefore as required in the current manual of survey instructions of the United States Department of the Interior, Bureau of Land Management or by a decree of a Court of Law and/or that the corner points mentioned in lines 3, 4 and 5 above were in conformance with the rules of the Michigan Board of Land Surveyors or by a Decree of a Court of Law; established, re-established, monumented, recovered, found as expressed below:

NOTE: Not more than 2 corners, all in the same town and range, may be recorded on this certificate.

A	B	C	D	E	F	G	H	I	J	K	L	M
1												
2	6	5	4	3	2	1						
3												
4	7	8	9	10	11	12						
5												
6	18	17	16	15	14	13						
7												
8	19	20	21	22	23	24						
9												
10	30	29	28	27	26	25						
11												
12	31	32	33	34	35	36						
13												

A. Description of original monument and accessories and/or subsequent restoration:

F-1
G.L.O.
CORNER NOT ESTABLISHED BY G.L.O.
-FOUND NO EVIDENCE OF THIS CORNER EVER BEING ESTABLISHED

APPROVED REMONUMENTATION CORNER
P.A. 345 OF 1990
ALLEGAN COUNTY
DATE APPROVED 11-11-97
COUNTY REP. K.V.O.

B. Description of corner evidence found and/or method applied in restoring or reestablishing corner:

F-1
SET STANDARD ALLEGAN COUNTY MONUMENT (3/4" X 36" IRON W/CAP) ON TOWN LINE AND MIDWAY BETWEEN E-1 AND G-1. (SEE SKETCH ON BACK OF CERTIFICATE.)
-THIS POSITION NOT ESTABLISHED BY G.L.O.
-THIS MONUMENT ACCEPTED AS THE BEST AVAILABLE EVIDENCE OF THE POSITION OF THE CORNER.

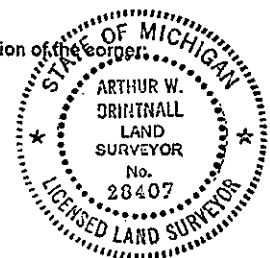
APPROVED BY ALLEGAN COUNTY PEER GROUP 11 NOVEMBER 97.

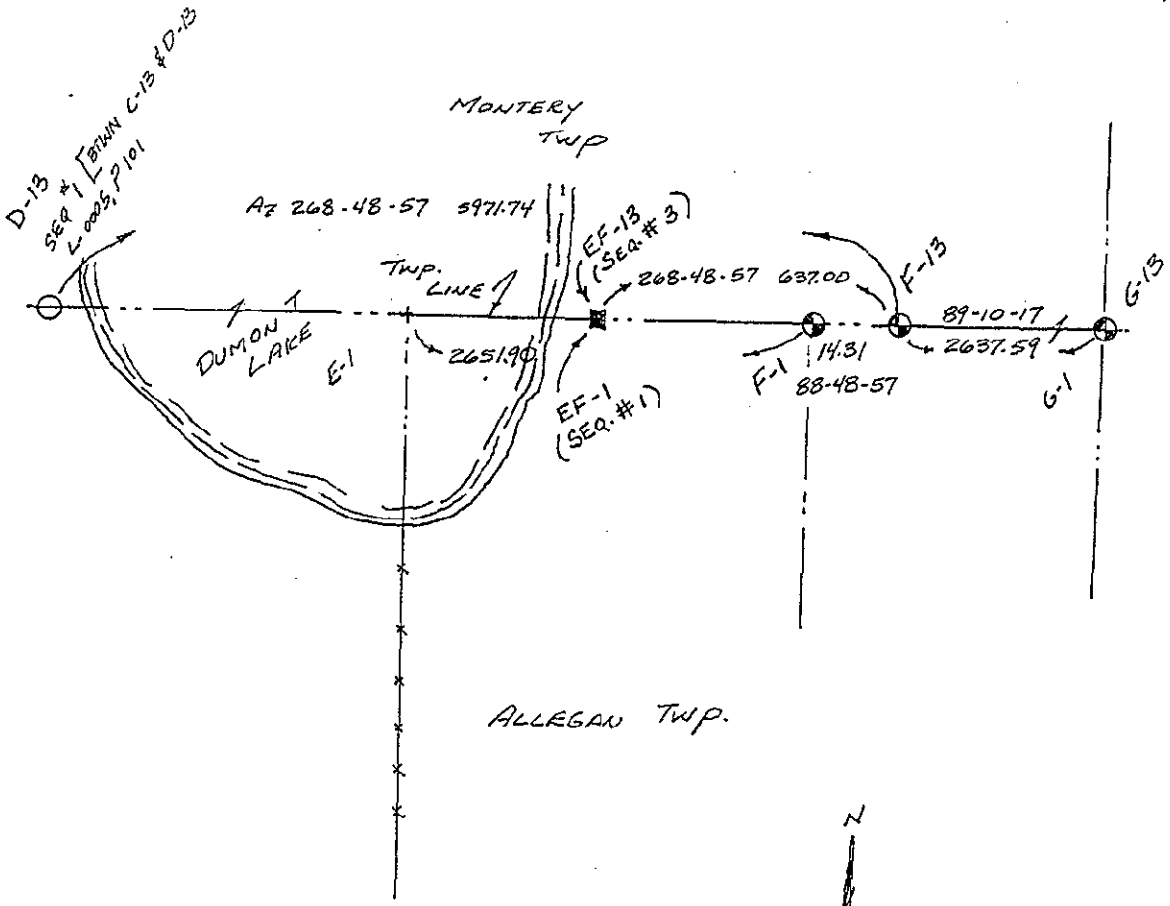
C. Description of monument for corner and accessories established to perpetuate locating the position of the corner:

F-1
STANDARD ALLEGAN COUNTY MONUMENT (3/4" X 36" IRON W/CAP)
-16D & REMON TAG SOUTHWEST SIDE 18" MAPLE NORTH 12.42'
-16D & REMON TAG WEST SIDE 5" COTTONWOOD NORTH 75° EAST 17.54'
-16D & REMON TAG NORTH SIDE 6" HACKBERRY SOUTH 80° EAST 23.31'
-16D & REMON TAG NORTHWEST SIDE 32' COTTONWOOD SOUTH 20° EAST 11.42'
-16D & REMON TAG NORTHEAST SIDE 12" ASH NORTH 65° WEST 22.13'

STANDARD ALLEGAN COUNTY MON., F-13 (MONTEREY TWP) EAST 14.31'

Signed by Arthur W. Brintnall Date Dec. 2, 1997
PREIN & NEWHOF
Surveyor's Michigan License No. #28407





NO SCALE