

ALLEGAN COUNTY REMONUMENTATION
 LAND CORNER RECORDATION CERTIFICATE
 Filing Requirement of Act 74, Mich. P.A. 1970

1995 DEC 14 PM 2:32
 FILED
 Register of Deeds Stamp & File Number

For corners in ALLEGAN (County) Located in: Corner Code #
 1. Public Land Survey T2N R 13W F-13
 T R ALLEGAN
 T R
 T R
 T R
 S T R
 S T R
 S T R
 S T R
 3. Miscellaneous Property in Sec. S T R
 S T R
 S T R
 4. Lot No. _____, Recorded Plat _____
 5. Private Claims _____

SURVEY &
 REMONUMENTATION

APR 29 1996

COMMISSION

	A	B	C	D	E	F	G	H	I	J	K	L	M
2													
3													
4													
5													
6													
7													
8													
9													
10													
11													
12													
13													

I, DONALD R. PITTS JR., in a field survey on JULY 27, 1995, do hereby certify that under requirements of P.A. 74, Michigan P.A. of 1970, the corner points mentioned in lines 1 and 2 above were in conformance with regulations and rules thereto as required in the current manual of survey instructions of the United States Department of the Interior, Bureau of Land Management or by a decree of a Court of Law and/or that the corner points mentioned in lines 3, 4 and 5 above were in conformance with the rules of the Michigan Board of Land Surveyors or by a Decree of a Court of Law, established, re-established, monumented, re-monumented, recovered, found as expressed below:

NOTE: Not more than 4 corners, all in the same town and range, may be recorded on this certificate.

A. Description of original monument and accessories and/or subsequent restoration:

G.L.O. SET POST
 W OAK 18 N 56 W 28
 W OAK 16 N 55 E 60

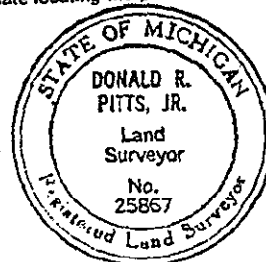
B. Description of corner evidence found and/or method applied in restoring or reestablishing corner:

FOUND 25" MAPLE WITH FENCE NORTH, EAST AND WEST
 KALAMAZOO RIVER 160'±, G.L.O. RIVER AT 2.30 CHAINS
 (151.8') ACCEPTED TREE AS CORNER
 TRAVERSED 2618' EAST AND 5452' WEST
 APPROVED BY THE ALLEGAN CO. REMON PEER GROUP JUNE 13, 1995, AND IS ACCEPTED AS A CAREFUL AND FAITHFUL PERPETUATION OF THE POSITION OF THE ORIGINAL CORNER.

APPROVED REMONUMENTATION CORNER
 P.A. 345 OF 1990
 ALLEGAN COUNTY
 DATE APPROVED 6-13-95
 COUNTY REP. Richard Van Buren

C. Description of monument for corner and accessories established to perpetuate locating the position of the corner:

25" MAPLE WITH FENCE NORTH, EAST AND WEST
 SEE BACK OF CERTIFICATE



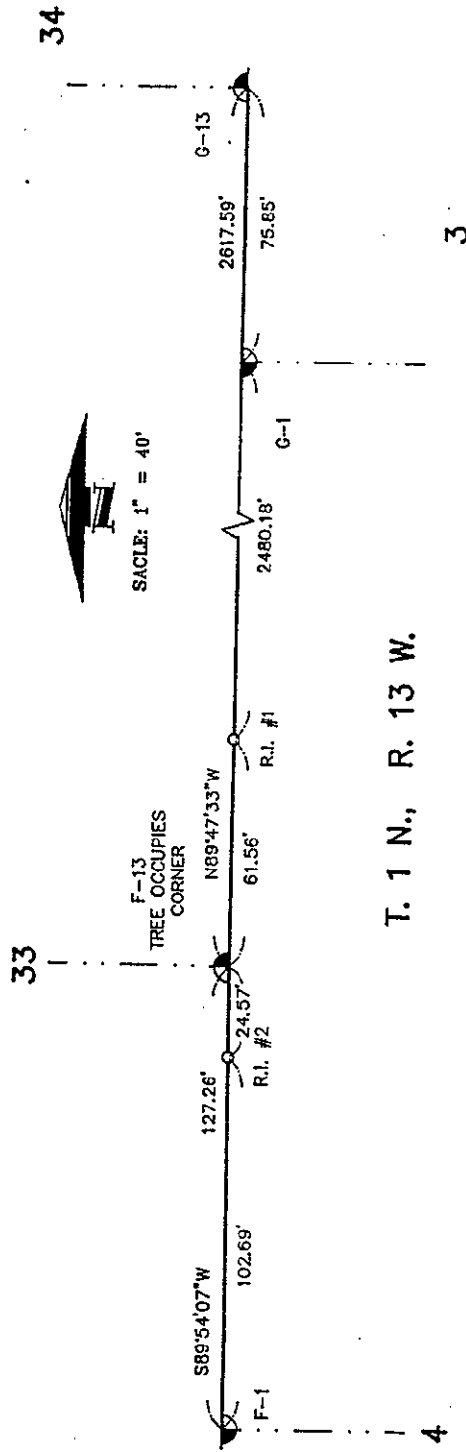
Signed by Donald R. Pitts Jr. Date 29 August 1995
 Surveyor's Michigan License No. 25867

FORM APPROVED BY MICHIGAN STATE BOARD OF LAND SURVEYORS, JAN. 28, 1971
 REVISED MAY 14, 1975
 REVISED JAN., 1983

0005 PAGE 180

SHEET 1 OF 2

T. 2 N., R. 13 W.



R.I. #2
 STANDARD ALLEGAN CO. REMON 3/4"x36" REFERENCE
 IRON W/YELLOW CAP #23520
 NAIL & REMON. TAG S.W. SIDE 18" ASH N60°W 18.79'
 NAIL & REMON. TAG N. SIDE 12" OAK S55°W 27.36'
 NAIL & REMON. TAG S. SIDE 16" MAPLE N70°E 26.00'
 NAIL & REMON. TAG N. SIDE 16" OAK S80°E 41.68'

R.I. #1
 STANDARD ALLEGAN CO. REMON 3/4"x36" REFERENCE
 IRON W/YELLOW CAP #23520
 NAIL & REMON. TAG W. SIDE 12" OAK S40°W 5.52'
 NAIL & REMON. TAG W. SIDE 16" OAK N40°E 5.23'
 NAIL & REMON. TAG W. SIDE 18" OAK S20°E 15.91'
 NAIL & REMON. TAG S. SIDE 24" TWIN OAK EAST 17.64'

3