

# SURVEY & REMONUMENTATION

ALLEGAN COUNTY REMONUMENTATION

## LAND CORNER RECORDATION CERTIFICATE Filing Requirement of Act 74, Mich. P.A. 1970

APR 29 1996

COMMISSION

For corners in

ALLEGAN

(County)

Located In:

Corner Code ~~≠~~

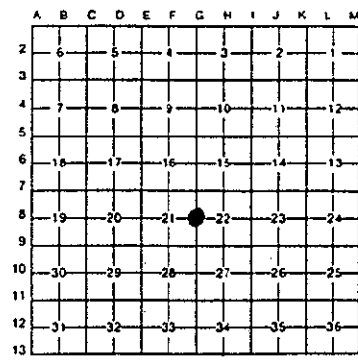
VALLEY TOWNSHIP

1. Public Land Survey	T	2	NR	14	W	G-8
	T		R			
	T		R			
	T		R			
2. Property Controlling in Section	S		T		R	
	S		T		R	
3. Miscellaneous Property in Sec.	S		T		R	
	S		T		R	

1995 DEC 14 PM 2:40  
REGISTER OF DEEDS  
ALLEGAN COUNTY, MICH.  
George J. Mitchell  
Register of Deeds Stamp & File Number  
FILED

4. Lot No. \_\_\_\_\_, Recorded Plat \_\_\_\_\_  
5. Private Claims \_\_\_\_\_

I, George J. Mitchell a field survey on November 15, 19 95, do hereby certify that under requirements of P.A. 74, Michigan P.A. of 1970, the corner points mentioned in lines 1 and 2 above were in conformance with regulations and rules theretofore as required in the current manual of survey instructions of the United States Department of the Interior, Bureau of Land Management or by a decree of a Court of Law and/or that the corner points mentioned in lines 3, 4 and 5 above were in conformance with the rules of the Michigan Board of Land Surveyors or by a Decree of a Court of Law; established, re-established, monumented, re-monumented, recovered, found as expressed below:



NOTE: Not more than 4 corners, all in the same town and range, may be recorded on this certificate.

- A. Description of original monument and accessories and/or subsequent restoration.  
G-8

SEE SHEET 2 OF 2



- B. Description of corner evidence found and/or method applied in restoring or reestablishing corner:

G-8  
FOUND 1/2" IRON & PLOW POINT & BRICK FROM CORNER HISTORY AND ACCEPTED ITS LOCATION AS A CAREFUL AND FAITHFUL PERPETUATION OF THE POSITION OF THE ORIGINAL CORNER.

THIS CORNER WAS APPROVED BY THE ALLEGAN COUNTY SURVEYORS PEER GROUP ON NOVEMBER 14, 1995

APPROVED REMONUMENTATION CORNER  
P.A. 345 OF 1990  
ALLEGAN COUNTY  
DATE APPROVED 11-14-95  
COUNTY REP. Bob L. Van Orden

- C. Description of monument for corner and accessories established to perpetuate locating the position of the corner:

G-8

REPLACED 1/2" IRON & PLOW POINT WITH 3/4" X 36" IRON PIN WITH ALLEGAN CO. REMON CAP.

A.C. remon tag & nail in East side of 30" Oak	AZ. 210°	45.85'
A.C. remon tag & nail in North side of 30" Oak	AZ. 250°	94.50'
A.C. remon tag & nail in East side of 28" Oak	AZ. 340°	77.86'
A.C. remon tag & nail in NE side of 20" Oak	AZ. 135°	100.45'
A.C. remon tag & nail in SW side of Power Pole	AZ. 215°	70.55'

SHEET 1 OF 2

Signed by George J. Mitchell Date November 15, 1995  
Surveyor's Michigan License No. 19618

0005 PAGE 313

1 OF 2

## GOVERNMENT CORNER HISTORY

WEST QUARTER POST OF SECTION 22  
TOWN 2 NORTH, RANGE 14 WEST, VALLEY TOWNSHIP

G-8

ORIGINAL GOVERNMENT	SET POST @ 40.00 CHAINS NORTH PINE 36" S13E 7LKS W. OAK 16" N27W 18LKS	
OLD NOTES	NO DESCRIPTION 14" OAK SW 44.5 CHECK 1995 SW COR. S.H. NW 93.4 GONE 1995	
ALLEGAN DAM #41 PAGE 60	PLOW PT. WITH BRICKS & STONES 6" APPLE N44E 45.0' CHECK 1995 ? N18W 77.0 GONE 1995 ? S11W 44:7	
D. RATEKIN (WITNESS CARD)	STAKE & PLOW POINT & BRICKS ST. SIGN SW 20.0' CHECK 1995 22 OAK SW 44.6 GONE 1995 14 OAK SW 56.9 CHECK 1995 FENCE POST SW 44.8 CHECK 1995 26" OAK WSW 92.6 CHECK 1995 SE COR/SCHOOL NW 93.1 GONE 1995 20" OAK NNW 76.3 CHECK 1995	
D. RATEKIN (WITNESS CARD)	FD 1/2" IRON BAR P. POLE N60W 70.56 CHECK 1995 P. POLE S45W 40.5 CHECK 1995 32" OAK N20W 77.89 GONE 1995 CL N-S RD EAST 14' CHECK 1995	
L.C.R.C. J. CLAPP 1981 L.3 P.333	IRON 30" OAK SSW 45.85 CHECK 1995 30" OAK WSW 94.50 CHECK 1995 28" OAK NNW 77.86 CHECK 1995	
R. MOORED 1983 & 1985	SAME AS ABOVE	
MITCHELL 1995	FOUND 1/2" IRON & PLOW POINT & BRICK	