

**LAND CORNER RECORDATION CERTIFICATE**  
**Filing Requirement of Act 74, Mich. P.A. 1970**

For corners in  
**ALLEGAN**

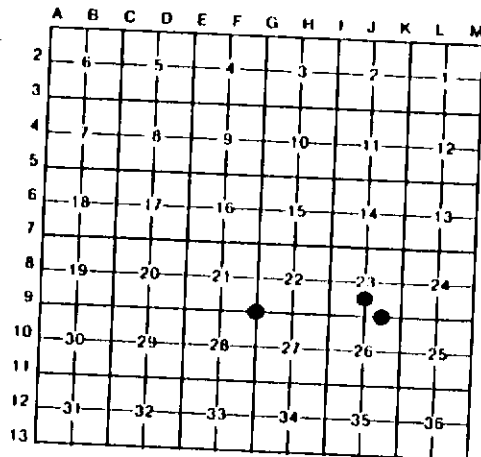
(County)	Located In:	Corner Code //
1. Public Land Survey	T 2N R 14W	69
	T R	
	T R	
	T R	
2. Property Controlling in Section	S 23 T 2N R 14W	16
	S 23 T 2N R 14W	12
3. Miscellaneous Property in Sec.	S T R	
	S T R	

Register of Deeds Stamp & File Number

4. Lot No. \_\_\_\_\_ Recorded Plat  
 5. Private Claims \_\_\_\_\_

I, **GARY C. BILOW** in a field survey on **April 30, 1991**, do hereby certify that under requirements of P.A. 74, Michigan P.A. of 1970, the corner points mentioned in lines 1 and 2 above were in conformance with regulations and rules therefore as required in the current manual of survey instructions of the United States Department of the Interior, Bureau of Land Management or by a decree of a Court of Law and/or that the corner points mentioned in lines 3, 4 and 5 above were in conformance with the rules of the Michigan Board of Land Surveyors or by a Decree of a Court of Law, established, re-established, monumented, re-monumented, recovered, found as expressed below.

**NOTE: Not more than 4 corners, all in the same town and range, may be recorded on this certificate.**



**A. Description of original monument and accessories and/or subsequent restoration:**  
 (G-9) ORIGINAL CORNER POST ESTABLISHED BY U.S. GOVERNMENT DEPUTY SURVEYOR C. BRITAIN, 1831. ACCESSORIES: PINE 14 S65E 13, DO B N68W  
 (16) FOUND NO SUBSEQUENT RECORD OF RESTORATION OR PERPETUATION.  
 (16) CORNER NOT ESTABLISHED IN ORIGINAL SURVEY. FOUND NO SUBSEQUENT RECORD.  
 (12) CORNER NOT ESTABLISHED IN ORIGINAL SURVEY. SHOWN IN NOTES DATED 1974 OF D.A. RATEKIN, R.L.S. #8781 AS 1" IRON MIDWAY AND ON A STRAIGHT LINE BETWEEN J-8 AND J-9. ACCESSORIES: NAIL IN 8" PINE S50E 2.78', NAIL IN N. SIDE 24" OAK, WEST 34.08', NAIL IN NE SIDE 14" OAK N40W 33.84', CL TRAIL 28' EAST. CORNER LOCATED IN 1974 BY DONALD L. BISSELL, R.L.S. #18655 AND NOTED IN LIBER 3, PAGE 175 OF LAND CORNER RECORDS.

**B. Description of corner evidence found and/or method applied in restoring or reestablishing corner:**  
 (G-9) ORIGINAL POST AND ACCESSORIES NOT RECOVERED. FOUND 1" IRON BAR 3" BELOW GRAVEL ROAD SURFACE. THIS BAR IS KNOWN TO HAVE BEEN USED BY LOCAL SURVEYORS AS THE CORNER. DISTANCES NORTH AND SOUTH TO ADJACENT 1/4 CORNERS MEASURES 2634.68', AND 2636.79' RESPECTIVELY, IN SIMILAR PROPORTION TO GLO RECORD 40 CHAINS. ACCEPTED THIS BAR AS THE BEST AVAILABLE EVIDENCE OF THE ORIGINAL CORNER LOCATION.  
 (16) FOUND, BUT DID NOT ACCEPT AS THE CORNER, A 3/4" THREADED IRON PIPE AT THE JUNCTION OF POST ROWS NORTHERLY AND EASTERLY. ESTABLISHED CORNER MIDWAY AND ON A STRAIGHT LINE BETWEEN J-9 AND K-9 AS RECORDED THIS DATE. AT THE POSITION FOR THE CORNER, I PLACED A 1/2"x36" REBAR ENCASED IN A 4" DIAMETER CONCRETE CYLINDER CAPPED WITH A CAST ALUMINUM MICHIGAN DEPARTMENT OF NATURAL RESOURCES TABLET. FROM THE CORNER, THE 3/4" PIPE BEARS WESTERLY 6.05'.  
 (12) FOUND 1" IRON BAR IN ACCORD WITH RATEKIN'S TIES TO PINE S50E AND OAK N40W, AND 0.05' W AND 0.02' N OF PROTRACTED POSITION. ACCEPTED THE 1" BAR AS A CAREFUL AND FAITHFUL DETERMINATION OF THE POSITION OF THE CORNER AND REPLACED SAME WITH A 1/2"x36" REBAR ENCASED IN A 4" DIAMETER CONCRETE CYLINDER CAPPED WITH A CAST ALUMINUM MICHIGAN DEPARTMENT OF NATURAL RESOURCES TABLET.

**C. Description of monument for corner and accessories established to perpetuate locating the position of the corner:**  
 (G-9) FOUND 1" DIAMETER IRON BAR  
 N60E 44.18' FOUND NAIL IN SE FACE 18" W. OAK; S55E 60.34' FOUND NAIL IN SOUTH FACE 14" W. OAK; S50W 55.21' FOUND NAIL IN NW FACE 18" W. OAK; S30W 59.2' UNDERGROUND CABLE SIGN POST; EAST 4' CENTERLINE OF GRAVEL ROAD SURFACE.  
 (16) SET CONCRETE MONUMENT WITH MDNR CAP N40E 3.58' SET NAIL AND MDNR TAG IN WEST FACE 8" W. OAK; S72E 41.09' SET NAIL AND MDNR TAG IN NORTH FACE 4" PINE; N30W 35.72' SET NAIL AND MDNR TAG IN NE FACE 7" W. PINE; S10W 6.30' SET NAIL AND MDNR TAG IN EAST FACE 5" W. PINE. BLAZED ABOVE NOTED TREES AT BASE AND BH.  
 (12) SET CONCRETE MONUMENT WITH MDNR CAP S50E 2.82' END SQUARE NAIL IN NORTH FACE 6" R. PINE; S80W 23.69' SET NAIL AND MDNR TAG IN NORTH FACE 14" W. OAK; N40W 33.82' END SQUARE NAIL IN 16" B. OAK; EAST 18.95' SET NAIL AND MDNR TAG IN 14" B. OAK; EAST 26' CENTERLINE OF N-S TRAIL. BLAZED ABOVE NOTED TREES AT BASE AND BH.

Signed by Gary C. Bilow  
 Surveyor's Michigan License No. 26453

Date 9-30-91



FORM APPROVED BY MICHIGAN STATE BOARD OF LAND SURVEYORS, JAN. 28, 1971  
 REVISED JAN. 1983