

LAND CORNER RECORDATION CERTIFICATE
Filing Requirement of Act 74, Mich. P.A. 1970

For corners in
ALLEGAN

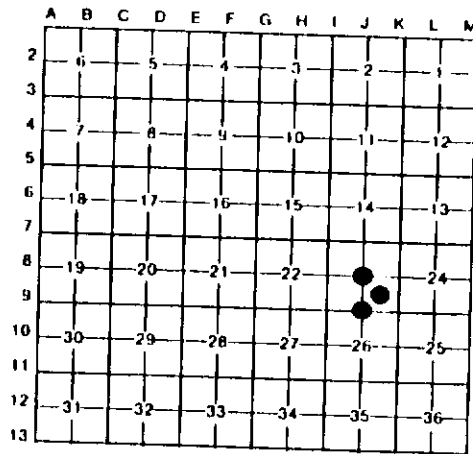
(County)	Located In:	Corner Code //
1. Public Land Survey	T 2N R 14W	J8
	T 2N R 14W	J9
	T R	
2. Property Controlling in Section	T R	
	S 23 T 2N R 14W	13
3. Miscellaneous Property in Sec.	S T R	
	S T R	

Register of Deeds Stamp & File Number

4. Lot No. _____, Recorded Plat _____
 5. Private Claims _____

I, **GARY C. BILOW**, in a field survey on **April 30, 1991**, 19____ do hereby certify that under requirements of P.A. 74, Michigan P.A. of 1970, the corner points mentioned in lines 1 and 2 above were in conformance with regulations and rules therefore as required in the current manual of survey instructions of the United States Department of the Interior, Bureau of Land Management or by a decree of a Court of Law and/or that the corner points mentioned in lines 3, 4 and 5 above were in conformance with the rules of the Michigan Board of Land Surveyors or by a Decree of a Court of Law, established, re-established, monumented, re-monumented, recovered, found as expressed below.

NOTE: Not more than 4 corners, all in the same town and range, may be recorded on this certificate.



- A. Description of original monument and accessories and/or subsequent restoration:
- (J-8) CORNER NOT ESTABLISHED IN ORIGINAL SURVEY. PREVIOUSLY RECORDED BY D.A. RATEKIN, R.L.S. #8781 IN 1972 AS 1 1/4" IRON (LAND CORNER CERTIFICATE RECORDED IN LIBER 1, PAGE 368). RECORDED ACCESSORIES INCLUDE: P. POLE SW 67', 10" TWIN CHERRY NE 58.1', 18" OAK SSW 65.6', 6" OAK WEST 86'.
 - (J-9) CORNER PREVIOUSLY RECORDED BY DONALD L. BISSELL, R.L.S. 18655, 1978, AS "SET 1" PIPE WITH CAP". SEE LAND CORNER RECORDATION CERTIFICATE RECORDED IN LIBER 1, PAGE 368 FOR MORE DETAIL AND RECORD ACCESSORIES.
 - (13) CORNER NOT ESTABLISHED IN ORIGINAL SURVEY. FOUND NO SUBSEQUENT RECORD.

- B. Description of corner evidence found and/or method applied in restoring or reestablishing corner:
- (J-8) FOUND AND ACCEPTED A 1" IRON PIPE WITH CAP #8781 SURROUNDED BY BROKEN BRICK 0.26'S AND 0.25' W OF THE INTERSECTION OF STRAIGHT LINES CONNECTING OPPOSITE 1/4 CORNERS. RATEKIN'S ACCESSORIES CHECK. REPLACED CAPPED PIPE WITH A 1/2"x36" REBAR ENCASED IN A 4" DIAMETER CONCRETE CYLINDER CAPPED WITH A CAST ALUMINUM MICHIGAN DEPARTMENT OF NATURAL RESOURCES TABLET SET 12" BELOW GROUND SURFACE.
 - (J-9) FOUND 1" PIPE WITH CAP #18655 LAYING ON GROUND ADJACENT TO CORNER LOCATION. REESTABLISHED CORNER FROM RECORDED ACCESSORIES. MONUMENTED CORNER POSITION WITH A 1/2"x36" REBAR ENCASED IN A 4" DIAMETER CONCRETE CYLINDER CAPPED WITH A CAST ALUMINUM MICHIGAN DEPARTMENT OF NATURAL RESOURCES TABLET. POURED CONCRETE MIX INTO HOLE AROUND MONUMENT.
 - (13) ESTABLISHED CORNER AT THE INTERSECTION OF STRAIGHT LINES CONNECTING CORNERS 9 WITH 16, AND 12 WITH 14. 9 AND 14 BEING COMPUTED POSITIONS MIDWAY BETWEEN J8-K8 AND K8-K9 RESPECTIVELY; 12 AND 16 BEING AS RECORDED THIS DATE. I RECOVERED, BUT DID NOT ACCEPT AS THE CORNER, A 1/2" O.D. THINWALL PIPE NOT OF RECORD, 0.64' N AND 0.41' E OF THE CORNER POSITION. AT THE CORNER POSITION ESTABLISHED, I PLACED A 1/2"x36" REBAR ENCASED IN A 4" DIAMETER CONCRETE CYLINDER CAPPED WITH A CAST ALUMINUM MICHIGAN DEPARTMENT OF NATURAL RESOURCES TABLET.

- C. Description of monument for corner and accessories established to perpetuate locating the position of the corner:
- (J-8) SET CONCRETE MONUMENT WITH MDNR CAP: N25E 74.85' FOUND PK NAIL IN WEST FACE TWIN 12" CHERRY; S50E 47.11' FOUND PK NAIL IN SOUTH FACE 14" W. PINE; S50W 67.38' FOUND PK NAIL IN SE FACE POWER POLE; NORTH 23' CENTERLINE OF MONROE ROAD PAVEMENT.
 - J-9 SET CONCRETE MONUMENT WITH MDNR CAP S35E 43.66' FND SPIKE IN SW FACE 15" WHITE OAK; S25W 29.99' FND SPIKE IN EAST FACE 22" WHITE OAK; N29E 45.77' FND SPIKE IN WEST FACE 30" WHITE OAK; S75E 14.77' FND SPIKE IN SOUTH FACE 13" TWIN WHITE OAK; WEST 22' CENTERLINE OF N-S TRAIL. BLAZED ALL ABOVE TREES AT BASE AND BH.
 - (13) SET CONCRETE MONUMENT WITH MDNR CAP N40E 14.32' SET NAIL AND MDNR TAG IN NW FACE 4" PINE; S55E 8.20' SET NAIL AND MDNR TAG IN NORTH FACE 3" PINE; S35W 23.49' SET NAIL AND MDNR TAG IN EAST FACE 5" PINE; N53W 19.19' SET NAIL AND MDNR TAG IN NORTH FACE 6" PINE. BLAZED ABOVE NOTED TREES AT BASE AND BH.

Signed by Gary C. Bilow Date 9-30-91
 Surveyor's Michigan License No. 26453

