

RF

FILED

MAR 07 2000

ALLEGAN COUNTY REMONUMENTATION
LAND CORNER RECORDATION CERTIFICATE
Filing Requirement of Act 74, Mich. P.A. 1970

00 FEB -1 AM 8:38

SECTION

For corners in
Allegan
(County)

Located In: Corner Code #

1. Public Land Survey T2N R15W C-10
T R
T R East 1/4 corner
T R Section 30
2. Property Controlling S T R Clyde Twp.
in Section S T R
3. Miscellaneous S T R
Property in Sec. S T R

4. Lot No. _____, Recorded Plat _____
5. Private Claims _____

Jayce ...
REGISTER OF DEEDS
ALLEGAN COUNTY, MICH.

1000007 P&E 15

Register of Deeds Stamp & File Number

I, Steve Lampen, in a field survey on December 22, 1999, do hereby certify that under requirements of P.A. 74, Michigan P.A. of 1970, the corner points mentioned in lines 1 and 2 above were in conformance with regulations and rules therefore as required in the current manual of survey instructions of the United States Department of the Interior, Bureau of Land Management or by a decree of a Court of Law and/or that the corner points mentioned in lines 3, 4 and 5 above were in conformance with the rules of the Michigan Board of Land Surveyors or by a Decree of a Court of Law; established, re-established, monumented, re-monumented, recovered, found as expressed below:

NOTE: Not more than 4 corners, all in the same town and range, may be recorded on this certificate.

A. Description of original monument and accessories and/or subsequent restoration:

C-10
GLO - 1831 - C. Britain
Set post
Tamarack 8 S 77 W 8
Tamarack 9 N 37 E 21

1976 - D. Ratekin, L.C.R.C. L3, P54
Part "A"
Witnesses from SW Surveys
NE corner house S 66.10'
Centerline underground telephone cable box N 20° E 27.2'
SW corner steel sided barn N 80° E 272.4'
Center gravel road 4' South

Part "C"
Found 1" pipe with ring on top
Same witnesses as Part "A"

Recorded incorrectly by Section and/or Twp.

B. Description of corner evidence found and/or method applied in restoring or reestablishing corner:

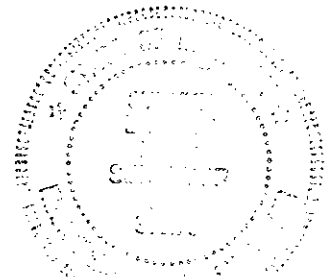
C 10
No corner monumentation found. No corner found at C-9 or C-11, re-established C-9 and C-11 per records from Mitchell Surveys. Set Standard Allegan County 3/4"x36" remonumentation iron with red cap #23520 on line and equidistant from C-9 and C-11, T2N, R15W. See sketch on back.

Approved by the Allegan County Remonumentation Peer Group on December 28, 1999, and is accepted as a careful And faithful re-establishment of the position of the original corner.

APPROVED REMONUMENTATION CORNER
P.A. 345 OF 1990
ALLEGAN COUNTY
DATE APPROVED DEC. 28, 1999
COUNTY REP. *[Signature]*

C. Description of monument for corner and accessories established to perpetuate locating the position of the corner:

C-10 Standard Allegan County 3/4"x36" remonumentation iron with red cap #23520
Centerline E and W ditch 359° 6.6'
E end 42" CMP 307° 10.5'
Power pole with remonumentation tag E side 198° 45.00'
1/2 diameter iron with cap #37279 139° 27.8'



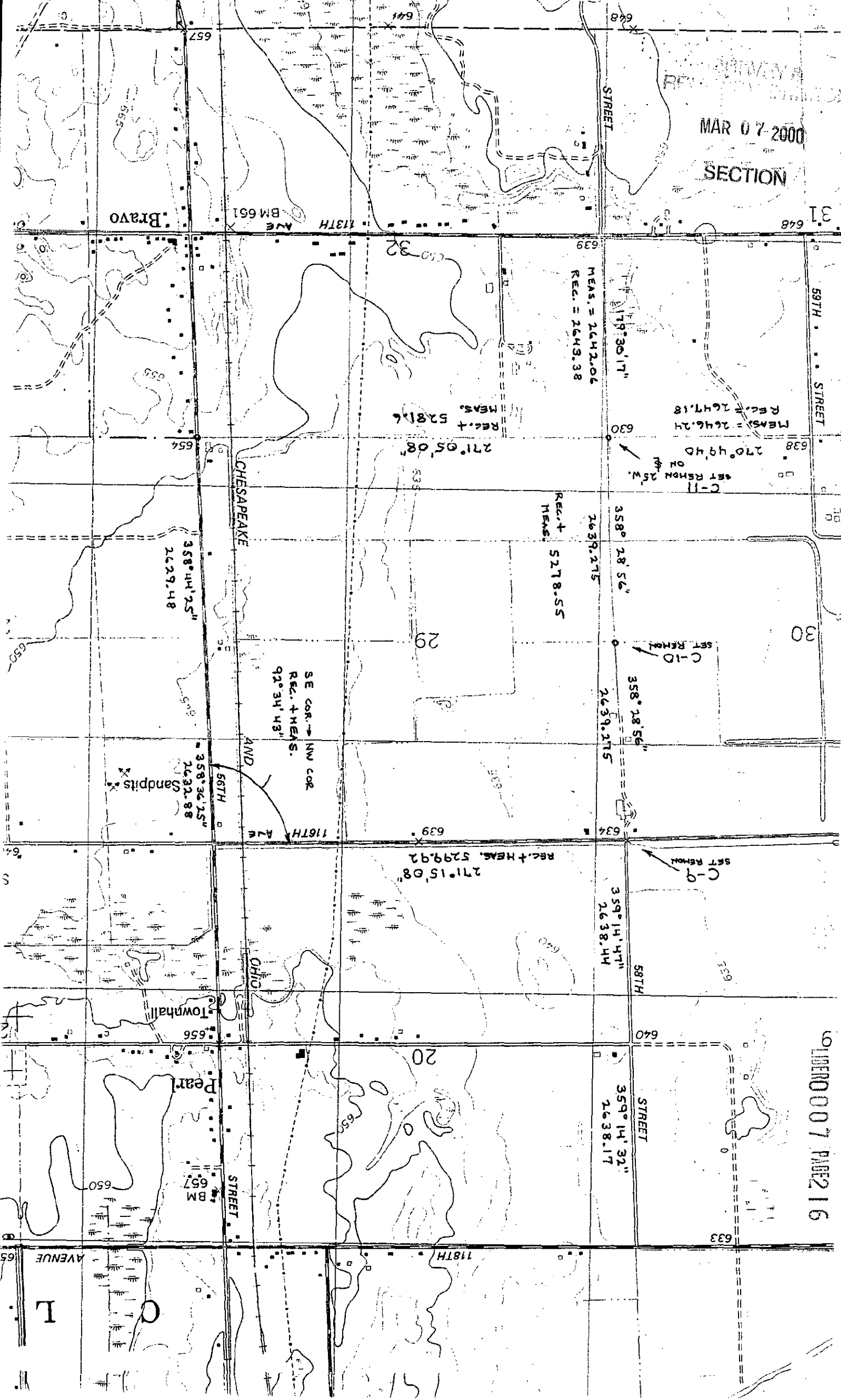
Signed by Steven Lampen

Date DECEMBER 31, 1999

Surveyor's Michigan License No. 37279

MAR 07 2000
SECTION

01000007 PAGE 2 16



Bravo

113TH AVE
BM 661

59TH STREET

MEAS. = 1642.06
REC. = 1643.38

MEAS. = 2646.24
REC. = 2647.18

MEAS. = 5281.6
REC. = 5281.6

270° 49' 40"
SET REMOV. 25' W.

271° 05' 08"

REC. + MEAS. = 5278.55

358° 28' 56"
2639.2175

358° 44' 25"
2629.48

SE COR. → NW COR
REC. + MEAS. = 92° 34' 43"

358° 28' 56"
2639.2175

358° 36' 25"
2632.88

AND

116TH AVE

REC. + MEAS. = 5299.92
271° 15' 08"

SET REMOV.

359° 14' 47"
2638.44

Townhall

58TH

Pearl

359° 14' 32"
2638.17

STREET

STREET

BM 657

118TH AVENUE

L

65

65