



MDOT PROJECT 3-43 M-89  
WITS 1946

J-1 N<sup>1</sup>/<sub>4</sub> Sec. 2 CLYDE TWP (2-15)

WOOD STAKE

S30W 4" OAK 28.98

S22E 14" OAK 65.17

L-1 N<sup>1</sup>/<sub>4</sub> Sec. 1 2-15

BOAT SPIKE RE-FASTENED FROM OLD WITS

COUNT 3" OAK 52.00'

S60W 3" OAK 46.26'

F-13 S<sup>1</sup>/<sub>4</sub> Sec. 33 3-14

STONE

N50E 14" OAK 27.29'

S75W 10" OAK 30.22'

SIDE 12" OAK 25.65'

G-13 SW 34 3-15

1" GAS PIPE

N50E COR. FENCE POST 47.23'

N55W POWER PILE 50.35'

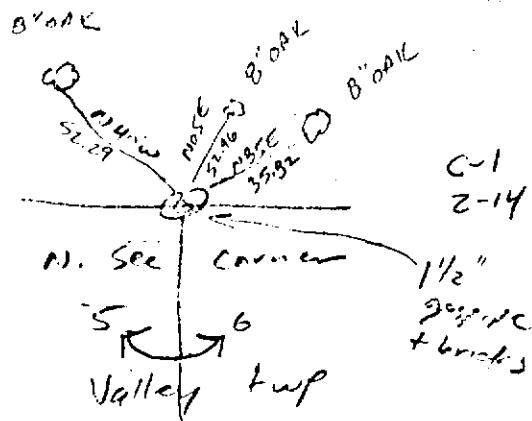
H-13 S<sup>1</sup>/<sub>4</sub> Sec. 34 3-14

1 1/4" GAL PIPE

N30W 14" OAK 40.76'

S10W 8" OAK 55.62'

S45E 6" OAK 21.32'



copy of pg 8 alignment notes  
see #1's