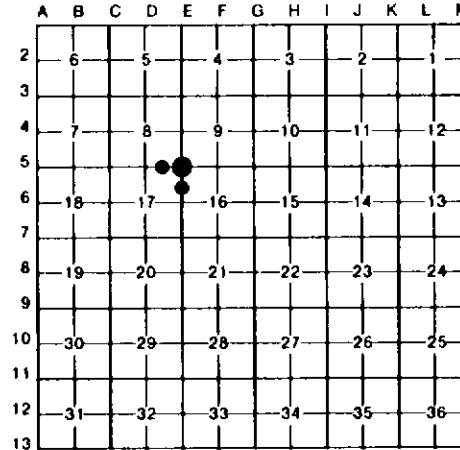


**LAND CORNER RECORDATION CERTIFICATE**  
**Filing Requirement of Act 74, Mich. P.A. 1970**

For corners in  
 Allegan \_\_\_\_\_  
 (County)

1. Public Land Survey	Located In:	Corner Code ##
	T 2N R 15W	E5
	T _____ R _____	_____
	T _____ R _____	_____
	T _____ R _____	_____
2. Property Controlling in Section	S 17 T 2N R 15W	2
	S 17 T 2N R 15W	7
3. Miscellaneous Property in Sec.	S _____ T _____ R _____	_____
	S _____ T _____ R _____	_____
4. Lot No. _____, Recorded Plat _____		
5. Private Claims _____		

**Register of Deeds Stamp & File Number**



I, Gary C. Bilow, in a field survey on September 02, 1992, 19\_\_\_\_, do hereby certify that under requirements of P.A. 74, Michigan P.A. of 1970, the corner points mentioned in lines 1 and 2 above were in conformance with regulations and rules therefore as required in the current manual of survey instructions of the United States Department of the Interior, Bureau of Land Management or by a decree of a Court of Law and/or that the corner points mentioned in lines 3, 4 and 5 above were in conformance with the rules of the Michigan Board of Land Surveyors or by a Decree of a Court of Law; established, re-established, monumented, re-monumented, recovered, found as expressed below:

**NOTE: Not more than 4 corners, all in the same town and range, may be recorded on this certificate.**

**A. Description of original monument and accessories and/or subsequent restoration:**

E5: Post established by U.S. Deputy Surveyor C. Britain in 1830 - accessories: Black Ash 16, S59W 19 links and Black Ash 9, N51E 30 links. County Surveyor E.P. Waterman records in the late 1880's in the County Surveyor Records "Stake - no accessories". Records (not dated) obtained from Wightman-Moored which also show County Road Commission notes state "Found stake set iron - accessories: PK in Tel. Pole N30E 40.77', PK in Power Pole N20W 37.5', and PK in Power Pole S25W 101.96". D.A. Ratekin (PS 8781) records same under Act 132 PA 1970 in Liber 857 Page 248.

2: Corner not established by U.S. Government Survey. Records (not dated) obtained from Wightman-Moored specify "PK - no accessories".

7: Corner not established by U.S. Government Survey. County Surveyor E.P. Waterman records in the late 1880's in the County Surveyor Records "Stone and Stake - no accessories". Records (not dated) obtained from Wightman-Moored specify "PK - no accessories".

**B. Description of corner evidence found and/or method applied in restoring or reestablishing corner:**

E5: Found 1" iron bar in Monument Box and two (2) of Ratekin's witnesses. Accepted this corner as the best evidence of the original GLO post.

2: Found PK nail midway between corners D5 and E5. Accepted PK nail as the East 1/16th corner on the North line of the Section.

7: Found PK nail midway between corners E5 and E6 and replaced with 1/2" capped iron. Distances to adjacent corners were reasonable and consistent with Waterman's measurements. Accepted this PK nail as the East 1/16th corner of the Northeast 1/4 of Section 17.

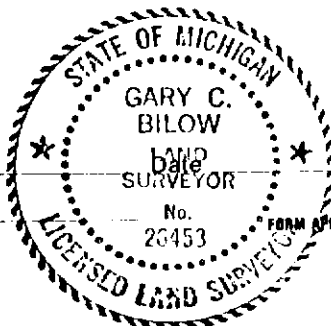
**C. Description of monument for corner and accessories established to perpetuate locating the position of the corner:**

E5: Found 1" iron bar in Monument Box  
 N35E 40.55', Spike in Support pole  
 N11W 37.55', PK in Power pole  
 S46W 38.72', Spike in Telephone pole  
 S46E 39.4', Street Sign Post  
 North 3.8', Centerline East-West road

2: Replaced PK nail with 1/2" x 24" rebar with plastic cap stamped "G.C. Bilow LLS 26453" in Monument Box  
 N67E 39.5', Stop Sign Post  
 S73W 37.2', Stop Sign Post  
 N73W 81.9', North end of 18" CMP culvert  
 Centerline-Intersection of 57th Street and 120th Avenue

7: Found PK nail and replaced with 1/2" x 24" rebar with plastic cap stamped "G. C. Bilow LLS 26453"  
 N71W 33.80', Spike in Power pole  
 S60E 29.5', South end 24" CMP culvert  
 N49E 36.3', North end 24" CMP culvert  
 West 2.5', Centerline North-South road

Signed by Gary C. Bilow  
 Surveyor's Michigan License No. 26453



1/19/93