

**LAND CORNER RECORDATION CERTIFICATE**  
**Filing Requirement of Act 74, Mich. P.A. 1970**

For corners in  
Allegan  
(County)

Located In: \_\_\_\_\_ Corner Code #/ #

1. Public Land Survey	T 2N	R 15W	RC E. of C6
	T	R	
	T	R	
	T	R	
2. Property Controlling in Section	S 17	T 2N	R 15W
	S 17	T 2N	R 15W
3. Miscellaneous Property in Sec.	S	T	R
	S	T	R

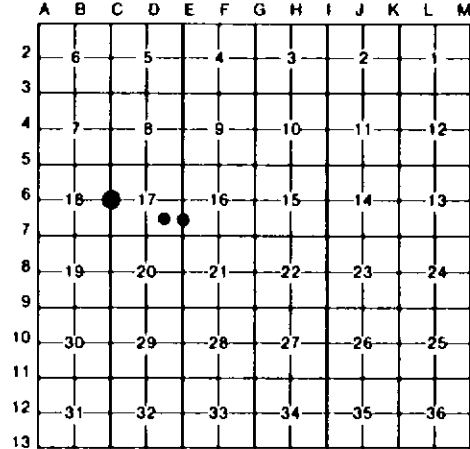
**Register of Deeds Stamp & File Number**

4. Lot No. \_\_\_\_\_, Recorded Plat \_\_\_\_\_  
 5. Private Claims \_\_\_\_\_

14 September 02, 1992  
 13 August 28, 1992

I, Gary C. Bilow, in a field survey on RC E. of C6, September 02, 1992, 19\_\_\_\_\_, do hereby certify that under requirements of P.A. 74, Michigan P.A. of 1970, the corner points mentioned in lines 1 and 2 above were in conformance with regulations and rules therefore as required in the current manual of survey instructions of the United States Department of the Interior, Bureau of Land Management or by a decree of a Court of Law and/or that the corner points mentioned in lines 3, 4 and 5 above were in conformance with the rules of the Michigan Board of Land Surveyors or by a Decree of a Court of Law; established, re-established, monumented, re-monumented, recovered, found as expressed below:

**NOTE: Not more than 4 corners, all in the same town and range, may be recorded on this certificate.**



**A. Description of original monument and accessories and/or subsequent restoration:**

RC E. of C6: Post established by U.S. Deputy Surveyor C. Britain in 1830 - accessories: Tamarack 8, S76W 17 links and Tamarack 4, N73-1/2E 15 links. County Surveyor H. Mac Dougall in 1916 references this corner in his survey/description of the Black River Drain as recorded in the County Drain Commission Office.  
 13: Corner not established by U.S. Government Survey. No other records found.  
 14: Corner not established by U.S. Government Survey. County Surveyor E.P. Waterman records in the late 1880's in the County Surveyor Records "Stone and Stake - no accessories". Records (not dated) obtained from Wightman-Moored specify "1/2" iron - no accessories".

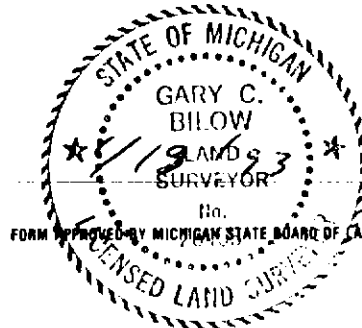
**B. Description of corner evidence found and/or method applied in restoring or reestablishing corner:**

RC E. of C6: A reference corner was established 25 feet East on the East-West 1/4 line. Actual corner reestablished at the intersection of the centerline of the Black River Drain with a North-South ditch centerline. The record distances to adjacent corners were found to be reasonable and consistent with this location.  
 13: Established corner at the intersection of 1/16th lines for the Southeast 1/4 of Section 17.  
 14: Found 1/2" rerod midway between corners E6 and E7. Distances to adjacent corners were reasonable and consistent with Waterman's measurements. Accepted this iron as the East 1/16th corner of the Southeast 1/4 of Section 17.

**C. Description of monument for corner and accessories established to perpetuate locating the position of the corner:**

RC E. of C6: Reference corner 25 feet East of true corner on the East-West 1/4 line Set 1/2" x 36" rebar encased in a 4" diameter concrete cylinder and capped with a cast aluminum Michigan Department of Natural Resources Tablet East 1', Steel Fence Post West 6', Edge of ditch bank West 25', Centerline North-South ditch North 30'+/-, Ditch going East	13: Set 1/2" x 24" rebar with plastic cap stamped "G.C. Bilow LLS 26453" in Monument Box S81E 36.52', Nail & Tag in Tel. pole N74W 54.66', Nail & Tag in 9" Hickory West 33.00', 1/2" capped rebar East 1', Centerline North-South road	14: Found 1/2" rerod S69W 32.52', Spike in Telephone pole N78E 72.88', Spike in Power pole S76E 95.3', Northwest Building corner S21E 77.86', Spike in Telephone pole
---	---	---

Signed by Gary C. Bilow Date \_\_\_\_\_  
 Surveyor's Michigan License No. 26453



FORM APPROVED BY MICHIGAN STATE BOARD OF LAND SURVEYORS, JAN. 28, 1971  
 REVISED MAY 14, 1975  
 REVISED JAN., 1983