

LAND CORNER RECORDATION CERTIFICATE
Filing Requirement of Act 74, Mich. P.A. 1970

For corners in Allegan (County)	Located In:	Corner Code =#
1. Public Land Survey	T 2N R 15W	D7
	T R	
	T R	
	T R	
2. Property Controlling in Section	S 17 T 2N R 15W	6
	S 17 T 2N R 15W	9
3. Miscellaneous Property in Sec.	S T R	
	S T R	

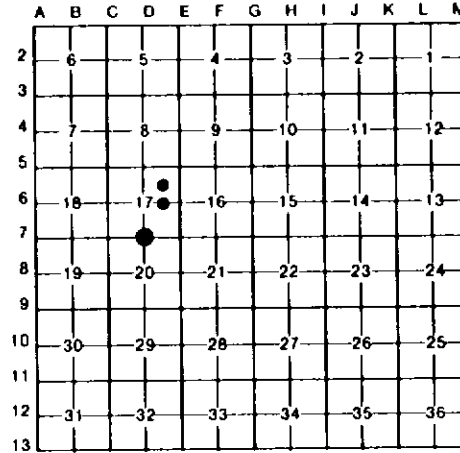
Register of Deeds Stamp & File Number

4. Lot No. _____, Recorded Plat _____
 5. Private Claims _____

9 August 28, 1992
 6 August 28, 1992

I, Gary C. Bilow, in a field survey on D7 September 02, 1992, do hereby certify that under requirements of P.A. 74, Michigan P.A. of 1970, the corner points mentioned in lines 1 and 2 above were in conformance with regulations and rules therefore as required in the current manual of survey instructions of the United States Department of the Interior, Bureau of Land Management or by a decree of a Court of Law and/or that the corner points mentioned in lines 3, 4 and 5 above were in conformance with the rules of the Michigan Board of Land Surveyors or by a Decree of a Court of Law; established, re-established, monumented, re-monumented, recovered, found as expressed below:

NOTE: Not more than 4 corners, all in the same town and range, may be recorded on this certificate.



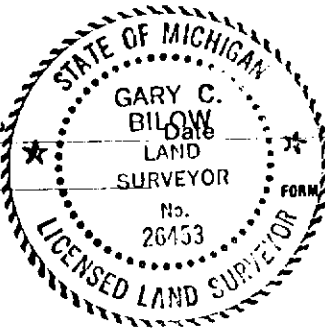
A. Description of original monument and accessories and/or subsequent restoration:
 D7: Post established by U.S. Deputy Surveyor C. Britain in 1830 - accessories: Beech 36, N62W 20 links and Beech 15, S35E 9 links. Records (not dated) obtained from Wightman-Moored specify "Railroad spike - accessories: 20" Cherry N 66.2 and Power Pole SSE 56.5".
 6: Corner not established by U.S. Government Survey. No other records found.
 9: Corner not established by U.S. Government Survey. Records (not dated) obtained from Wightman-Moored specify "1/2" iron bar - accessory: Fence Post E 25.8". County Road Commission records (not dated) specify "Iron - accessories: PK & washer in Power Pole SW 63.99', PK & washer in 11" Spruce WSW 73.88', PK & washer in Service Pole WNW 92.42', and SE corner House NW 129.48".

B. Description of corner evidence found and/or method applied in restoring or reestablishing corner:
 D7: Found Railroad spike - No previous witnesses recovered. Distances to adjacent corners reasonable and consistent with Wightman-Moored records. Accepted this corner as the best evidence of the original GLO post.
 6: Established corner at the intersection of 1/16th lines for the Northeast 1/4 of Section 17.
 9: Found 1/2" rerod and one (1) Road Commission witness. Did not accept this iron as the corner because of the reestablishment of the West 1/4 corner recorded this date. Established corner midway on line between corners D6 and E6.

C. Description of monument for corner and accessories established to perpetuate locating the position of the corner:

D7: Replaced Railroad spike with 1/2" x 24" rebar with plastic cap stamped "G.C. Bilow LLS 26453" in Monument Box North 33.00', 1/2" capped rerod S32E 46.94', Nail & Tag in 8" Elm East 76', Centerline driveway to North North 1', Centerline East-West road	6: Set 1/2" x 24" rebar with plastic cap stamped "G.C. Bilow LLS 26453" in Monument Box West 33.00', MDNR monument S53E 76.05', Nail & Tag in 4" Pine N77W 36.81', Nail & Tag in 8" Apple S40W 80.4', Northeast House corner East 0.8', Centerline North-South road	9: Set 1/2" x 24" rebar with plastic cap stamped "G.C. Bilow LLS 26453" in Monument Box N76E 30.17', Nail & Tag in 30" Ash S43W 58.03', Nail & Tag in Tel. pole S80W 68.57', Nail & Tag in 20" Spruce S52E 4.77', 1/2" rerod East 3.8', Centerline North-South road
--	--	--

Signed by Gary C. Bilow
 Surveyor's Michigan License No. 26453



4/19/93