

**LAND CORNER RECORDATION CERTIFICATE**  
**Filing Requirement of Act 74, Mich. P.A. 1970**

For corners in  
Allegan  
(County)

Located In: \_\_\_\_\_ Corner Code E7

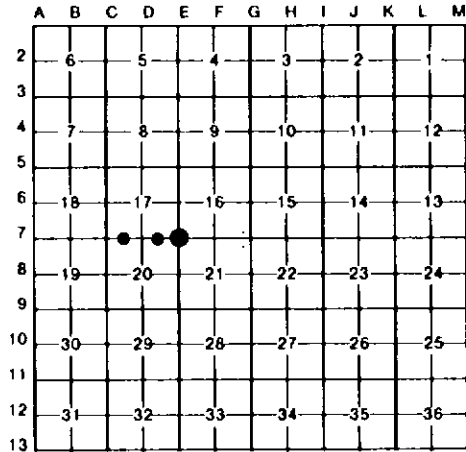
1. Public Land Survey	T 2N	R 15W	E7
	T	R	
	T	R	
	T	R	
2. Property Controlling in Section	S 17	T 2N R 15W	16
	S 17	T 2N R 15W	15
3. Miscellaneous Property in Sec.	S	T	R
	S	T	R

**Register of Deeds Stamp & File Number**

4. Lot No. \_\_\_\_\_, Recorded Plat \_\_\_\_\_  
 5. Private Claims \_\_\_\_\_

I, Gary C. Bilow, in a field survey on E7 September 02, 1992, 19 \_\_\_\_\_,  
 do hereby certify that under requirements of P.A. 74, Michigan P.A. of 1970, the corner points mentioned  
 in lines 1 and 2 above were in conformance with regulations and rules therefore as required in the  
 current manual of survey instructions of the United States Department of the Interior, Bureau of Land  
 Management or by a decree of a Court of Law and/or that the corner points mentioned in lines 3, 4 and 5  
 above were in conformance with the rules of the Michigan Board of Land Surveyors or by a Decree of a  
 Court of Law; established, re-established, monumented, re-monumented, recovered, found as  
 expressed below:

**NOTE: Not more than 4 corners, all in the same town and range, may be recorded on this certificate.**



**A. Description of original monument and accessories and/or subsequent restoration:**

E7: Post established by U.S. Deputy Surveyor C. Britain in 1830 - accessories: Sugar 16, N51E 8 links and Beech 12, S79W 14 links. County Surveyor E.P. Waterman records in late 1880's in the County Surveyor Records "Stone with X - no accessories given". Records (not dated) obtained from Wightman-Moored specify "Bolt - accessories: Power Pole SW 47.2', Guy Pole SE 47.7', Street Sign NE 33.9', Telephone Pole NE 54', and Garage Corner SW 88.9'". Corner recorded under Act 132 PA 1970 by D. Greer (PS #16042) in Liber 919 Page 748 as "Fd. Square head bolt - accessories: P. Pole SW 47.68', Tel. Pole SE 48.03', 20" Maple SE 72.14', and St. Sign NE 44.50'" and then again in Liber 1143 Page 60 with same accessories.

16: Corner not established by U.S. Government Survey. Records (not dated) obtained from Wightman-Moored specify "1/2" iron - accessories: Tel. Pole NE 66.7', St. Sign SSW 28.3', Power Pole SW 89.3', and Tel. Pole NW 60.2'". County Road Commission records show the same plus "PK & washer in 14" Maple ENE 75.76'".

15: Corner not established by U.S. Government Survey. No other records found.

**B. Description of corner evidence found and/or method applied in restoring or reestablishing corner:**

E7: Found 1/2" Bolt with square top - No previous witnesses recovered. Measurements to adjacent corners were reasonable and consistent with County Surveyor and Recorded Survey measurements. Accepted this corner as the best evidence of the original GLO post.

16: Found 1/2" rerod and recovered one (1) Road Commission witness. Accepted this corner as the East 1/16 corner on the South line of Section 17.

15: Established corner midway on line between corners C7 and D7.

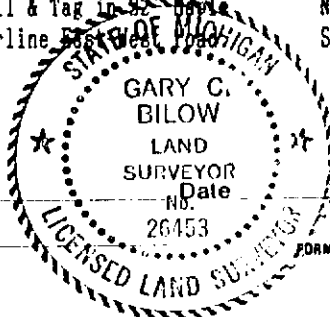
**C. Description of monument for corner and accessories established to perpetuate locating the position of the corner:**

E7: Replaced 1/2" Bolt with 1/2" x 24" rebar with plastic cap stamped "G.C. Bilow LLS 26453" in Monument Box  
 S45E 48.10', Nail & Tag in Support pole  
 S50W 89.1', Northeast Building corner  
 N51E 48.3', Street Sign Post  
 N19W 51.0', Stop Sign Post  
 East 4', Centerline road running South

16: Left 1/2" rerod and added plastic cap stamped "G.C. Bilow LLS 26453" and Monument Box  
 N57E 75.76', PK & washer in 14" Maple  
 S19W 27.5', Street Sign Post  
 N67W 89.65', Nail & Tag in 24" Maple  
 N22W 64.80', Nail & Tag in 24" Maple  
 South 2', Centerline East-West road

15: Set 1/2" x 24" rebar with plastic cap stamped "G.C. Bilow LLS 26453" in Monument Box  
 North 33.00', MDNR monument  
 S44W 53.05', Nail & Tag in 16" Pine  
 S63W 64.37', Nail & Tag in 10" Pine  
 N38W 38.0', Concrete Fence Post  
 South 2.8', Centerline East-West road

Signed by Gary C. Bilow  
 Surveyor's Michigan License No. 26453



1/19/93