

LAND CORNER RECORDATION CERTIFICATE
Filing Requirement of Act 74, Mich. P.A. 1970

For corners in
 Allegan

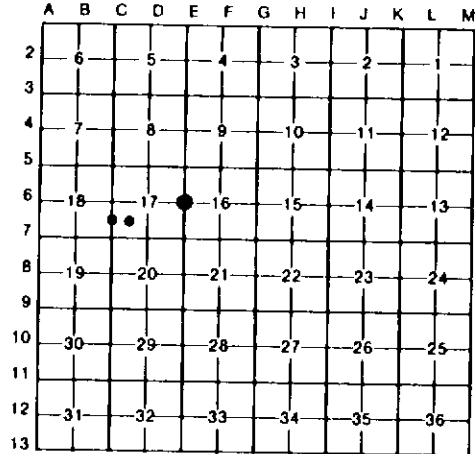
(County)	Located In:	Corner Code =##
1. Public Land Survey	T 3N R 15W	E6
	T R	
	T R	
	T R	
2. Property Controlling in Section	S 17 T 2N R 15W	10
	S 17 T 2N R 15W	11
3. Miscellaneous Property in Sec.	S T R	
	S T R	

Register of Deeds Stamp & File Number

4. Lot No. _____, Recorded Plat _____
 5. Private Claims _____

I, Gary C. Bilow, in a field survey on September 02, 1992, 19____ do hereby certify that under requirements of P.A. 74, Michigan P.A. of 1970, the corner points mentioned in lines 1 and 2 above were in conformance with regulations and rules therefore as required in the current manual of survey instructions of the United States Department of the Interior, Bureau of Land Management or by a decree of a Court of Law and/or that the corner points mentioned in lines 3, 4 and 5 above were in conformance with the rules of the Michigan Board of Land Surveyors or by a Decree of a Court of Law; established, re-established, monumented, re-monumented, recovered, found as expressed below:

NOTE: Not more than 4 corners, all in the same town and range, may be recorded on this certificate.



A. Description of original monument and accessories and/or subsequent restoration:

E6: Post established by U.S. Deputy Surveyor C. Britain in 1830 - accessories: Beech 14, S88E 9 links and Lynn 24, N73W 23 links. County Surveyor E.P. Waterman records in the late 1880's in the County Surveyor Records "Stone and Stake - no accessories". Records (not dated) obtained from Wightman-Moored which include County Road Commission notes state "Found stone - set iron - accessories: PK in 16" Sycamore ENE 72.74', PK in 30" Ash E 76.07', and Iron rod NW 65.24'". Corner recorded under Act 132 PA 1970 by D. Greer (PS 16042) in Liber 919 Page 748 as "Found Steel Bar - raised with 1" pipe - accessories: P.Pole WSW 30.44', P.Pole SE 71.22', Guy Pole ESE 32.30', and SW Cor. Hse foundation ENE 80.03'" and then again in Liber 1143 Page 60 with same accessories.
 10: Corner not established by U.S. Government Survey. No other record found.
 11: Corner not established by U.S. Government Survey. No other record found.

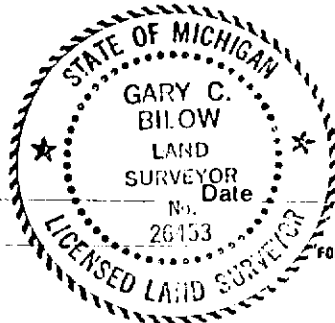
B. Description of corner evidence found and/or method applied in restoring or reestablishing corner:

E6: Found 3/4" iron pipe and three (3) of Greer's witnesses. Accepted this corner as the best evidence of the original GLO post.
 10: Established corner midway on line between corners C6 and C7.
 11: Established corner at the intersection of the 1/16th lines for the Southwest 1/4 of Section 17.

C. Description of monument for corner and accessories established to perpetuate locating the position of the corner:

E6: Found 3/4" iron pipe and placed Monument Box S87W 30.37', Spike in Power pole S77E 32.30', Nail & washer in Power pole In centerline of North-South road S26E 71.25', Nail & washer in Power pole	10: Set 1/2" x 24" rebar with plastic cap stamped "G.C. Bilow LLS 26453" on West edge of ditch West 1', Steel Fence Post North 9', Ditch going East	11: Set 1/2" x 36" rebar encased in a 4" diameter concrete cylinder and capped with a cast aluminum Michigan Department of Natural Resources Tablet on West edge of North-South trail West 1', Steel Fence Post North 9', East-West ditch
---	---	---

Signed by Gary C. Bilow
 Surveyor's Michigan License No. 26453



1/19/93
 FORM APPROVED BY MICHIGAN STATE BOARD OF LAND SURVEYORS, JAN. 28, 1971
 REVISED MAY 14, 1975
 REVISED JAN., 1983