

LAND CORNER RECORDATION CERTIFICATE
Filing Requirement of Act 74, Mich. P.A. 1970

For corners in
Allegan
 (County)

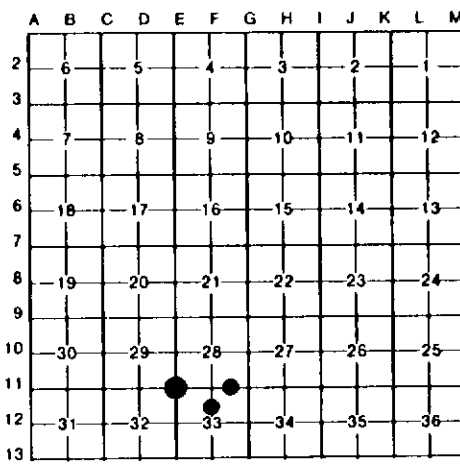
Located In: _____ Corner Code *≠* _____

1. Public Land Survey	T	2N	R	15W	<u>B11</u>	
	T		R			
	T		R			
	T		R			
2. Property Controlling in Section	S	33	T	2N	R 15W	<u>5</u>
	S	33	T	2N	R 15W	<u>1</u>
3. Miscellaneous Property in Sec.	S		T		R	
	S		T		R	

4. Lot No. _____, Recorded Plat _____

5. Private Claims _____

Register of Deeds Stamp & File Number



I, Gary C. Bilow, in a field survey on 5 January 25, 1993, 19____ do hereby certify that under requirements of P.A. 74, Michigan P.A. of 1970, the corner points mentioned in lines 1 and 2 above were in conformance with regulations and rules therefore as required in the current manual of survey instructions of the United States Department of the Interior, Bureau of Land Management or by a decree of a Court of Law and/or that the corner points mentioned in lines 3, 4 and 5 above were in conformance with the rules of the Michigan Board of Land Surveyors or by a Decree of a Court of Law; established, re-established, monumented, re-monumented, recovered, found as expressed below:

NOTE: Not more than 4 corners, all in the same town and range, may be recorded on this certificate.

A. Description of original monument and accessories and/or subsequent restoration:
E11: Post established by U.S. Deputy Surveyor C. Britain in 1831 - accessories: Pine 22 N65W 8 links and Beech 5 S61E 24 links. Undated Allegan County Surveyor records obtained from Wightman-Moored show a Stake, then a Stone - accessories: NW cor house SE 62', and then an Iron - accessories: Power pole SW 49.0', NW corner House SE 62.0', 12" Oak WSW 55.2', Concrete post ESE 30.1', SW corner Telephone outlet S88E 51.35'. Corner recorded under Act 74, PA 1970 in 1973 by D. Ratekin (PS #8781) in Liber 2, Page 207 as "Found Iron - accessories: P. Pole S35W 49.0', NW cor House S50E 62', 12" Oak S67W 55.2', SW cor Tele".
5: Allegan County Surveyor D. Allen in 1958 shows this location on a survey work sheet of the Northwest 1/4 of Section 33 but does not show if anything was set. This record obtained from Wightman-Moored.
1: Allegan County Surveyor D. Allen in 1958 shows this location on a survey work sheet of the Northwest 1/4 of the Section but does not show if anything was set. This record obtained from Wightman-Moored.

B. Description of corner evidence found and/or method applied in restoring or reestablishing corner.
E11: Found 3/4" Iron bar in Monument box and three (3) of Ratekin's witnesses. Accepted this corner as the best evidence of the original GLO post.
5: Established corner midway on line between corners F11 and F12.
1: Established corner midway on line between corners E11 and F11.

C. Description of monument for corner and accessories established to perpetuate locating the position of the corner:
E11: Found 3/4" Iron Bar in Monument box S43W 49.59', Nail in Power pole S46E 62.0', NW corner of House S80W 55.95', Nail & Tag in 21" Oak Centerline North-South road
5: Set 1/2" x 36" rebar encased in a 4" diameter concrete cylinder and capped with a cast aluminum Michigan Department of Natural Resources Tablet N19W 10.45', Nail & Tag in 16" Oak S10W 26.29', Nail & Tag in 22" Oak N73W 14.70', Nail & Tag in 10" twin Oak N65E 3.54', Bedrail
1: Set 1/2" x 36" rebar encased in a 4" diameter concrete cylinder and capped with a cast aluminum Michigan Department of Natural Resources Tablet N16E 4.83', Nail & Tag in 4" Oak S26E 23.99', Nail & Tag in 6" Ash N85W 6.75', Nail & Tag in 5" Oak N29W 24.47', Nail & Tag in 6" Oak



Signed by Gary C. Bilow Date 3/5/93
 Surveyor's Michigan No. 26453