

LAND CORNER RECORDATION CERTIFICATE
Filing Requirement of Act 74, Mich. P.A. 1970

For corners in
Allegan
(County)

Located In: _____ Corner Code: //

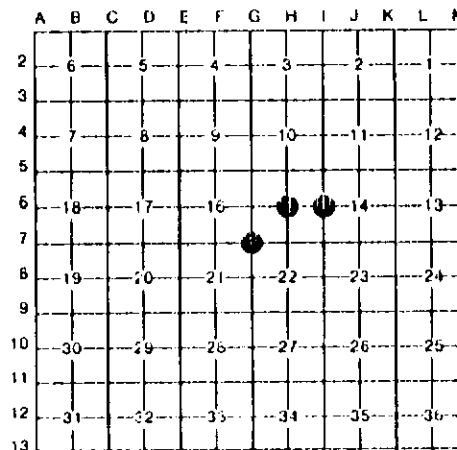
1. Public Land Survey	T 2N R 15W	H6
	T 2N R 15W	16
	T 2N R 15W	67
	T _____ R _____	_____
2. Property Controlling in Section	S _____ T _____ R _____	_____
	S _____ T _____ R _____	_____
3. Miscellaneous Property in Sec.	S _____ T _____ R _____	_____
	S _____ T _____ R _____	_____

Register of Deeds Stamp & File Number

4. Lot No. _____, Recorded Plat _____
 5. Private Claims _____

67 September 20, 1991
 16 February 11, 1992

I, Gary C. Below, in a field survey on H6 September 20, 1991, 19____, do hereby certify that under requirements of P.A. 74, Michigan P.A. of 1970, the corner points mentioned in lines 1 and 2 above were in conformance with regulations and rules therefore as required in the current manual of survey instructions of the United States Department of the Interior, Bureau of Land Management or by a decree of a Court of Law and/or that the corner points mentioned in lines 3, 4 and 5 above were in conformance with the rules of the Michigan Board of Land Surveyors or by a Decree of a Court of Law, established, re-established, monumented, re-monumented, recovered, found as expressed below:



NOTE: Not more than 4 corners, all in the same town and range, may be recorded on this certificate.

A. Description of original monument and accessories and/or subsequent restoration:

H6: Corner not established by U.S. Government Survey. Corner called for in description of Leverich Drain which was surveyed by H. MacDougall in 1917. Corner recorded by J. Clapp, LLS #14091, under Act 74, PA 1970 in Liber 3, Page 96 on 9/10/1976 as "Set 2" x 3-1/2" pipe at intersection of 1/4 lines - accessories: 14" Oak, NNW, 13.37'; 12" Oak, ENE, 14.29'; 8" Oak, SW, 28.70'; CL E-W ditch, South, +/- 6'."
 16: Post established by U.S. Deputy Surveyor C. Britain in 1831 - accessories: Post is a 5" Maple. County Surveyor H. MacDougall calls for corner in description of Leverich Drain as surveyed in 1917.
 67: Post established by U.S. Deputy Surveyor C. Britain in 1831 - accessories: Post is a Black Ash 11". County Surveyor notes by E.P. Waterman in 1892 reference Pine & Hemlock stakes for the corner. John Clapp, LLS #14091, recorded corner under Act 74, PA 1970 in Liber 3, Page 94 on 9/10/1976 as "Found 3/4" steel bar - accessories: 18" Willow, NW, 91.28'; SW corner house foundation, NE, 137.55'; CL Spp. 3/4" SW 30.15'."
B. Description of corner evidence found and/or method applied in restoring or reestablishing corner:

H6: Found Clapp's 2" pipe 9' North of intersection of 1/4 lines. Determined that Clapp used a computed E 1/4 corner to establish East-West 1/4 line. Established corner at intersection of 1/4 lines using East Quarter corner (1-6) as recorded this date. Corner falls in the Leverich Drain. Set reference monument on North-South 1/4 line 100.00' north of true corner.
 16: Reestablished corner at the intersection of the centerline of Leverich Drain with the line between corners 1-6 and 1-7. Corner falls in a cross culvert therefore a Reference Corner was set on the section line 35.12' to the north on the section line.
 67: Found 3/4" steel bar and recovered one (1) of Clapp's witnesses. Accepted steel bar as the best evidence of the original GLC corner.

C. Description of monument for corner and accessories established to perpetuate locating the position of the corner:

H6: Corner falls in Leverich Drain. Set Reference Corner 100' North of true corner, a 1/2" x 3/8" rebar encased in 4" diameter concrete cylinder and capped with a cast aluminum Michigan Department of Natural Resources tablet N22W 30.89', Nail & DNR tag in West face 8" White Oak N1E 38.62', N&T in West face 9" Oak SBE 60.24', N&T in East face 12" Pine N87E 11.46', N&T in South face 4" Oak	16: Set 1" x 16" iron bar 35.12' North of true corner and 0.5' below gravel road surface S20W 66.26', Nail & DNR tag in 6" Cherry S2W 34.6', CL of E-W 24" CSP S47E 29.48', N&T in RR tie fence post S31W 39.5', west end 24" CSP S19E 36.5', east end 24" CSP	67: Found 3/4" steel bar and placed monument box N01E 137.55', SE corner house foundation S16W 93.18', Government bench mark #161 dated 1946 N75E 42.3', Northeast corner of concrete culvert
---	---	--

Signed by _____

Date _____

