

RF

MAR 07 2000

FILED

ALLEGAN COUNTY REMONUMENTATION
LAND CORNER RECORDATION CERTIFICATE
Filing Requirement of Act 74, Mich. P.A. 1970

00 FEB -1 AM 8:39

SECTION

For corners in
Allegan _____
(County)

Located In: Corner Code #

1. Public Land Survey T2N__ R16W__ L-6
T__ R__
T__ R__ Central 1/4 corner
T__ R__ Section 13
2. Property Controlling S__ T__ R__ Ganges Twp.
in Section S__ T__ R__
3. Miscellaneous S__ T__ R__
Property in Sec. S__ T__ R__

4. Lot No. _____, Recorded Plat _____

5. Private Claims _____

Joyce A. B...
REGISTER OF DEEDS
ALLEGAN COUNTY MICH.

19990007 PAGE 264

Register of Deeds Stamp & File Number

	A	B	C	D	E	F	G	H	I	J	K	L	M
1													
2	6	5	4	3	2	1							
3													
4	7	8	9	10	11	12							
5													
6	18	17	16	15	14	13							
7													
8	19	20	21	22	23	24							
9													
10	30	29	28	27	26	25							
11													
12	31	32	33	34	35	36							

I, Steve Lampen, in a field survey on December 22, 1999, do hereby certify that under requirements of P.A. 74, Michigan P.A. of 1970, the corner points mentioned in lines 1 and 2 above were in conformance with regulations and rules therefore as required in the current manual of survey instructions of the United States Department of the Interior, Bureau of Land Management or by a decree of a Court of Law and/or that the corner points mentioned in lines 3, 4 and 5 above were in conformance with the rules of the Michigan Board of Land Surveyors or by a Decree of a Court of Law; established, re-established, monumented, re-monumented, recovered, found as expressed below:

NOTE: Not more than 4 corners, all in the same town and range, may be recorded on this certificate.

A. Description of original monument and accessories and/or subsequent restoration:
L-6
GLO - Not monumented by Government
No records recovered

B. Description of corner evidence found and/or method applied in restoring or reestablishing corner:
L-6 Found no monumentation at corner. Set an Allegan County Remonumentation iron and cap at the intersection of the 1/4 lines.

See sketch on back.

Corner was not monumented by the original GLO Survey. Set iron is accepted as the best available evidence of the position of the corner.

Approved by the Allegan County Remonumentation Peer Group on December 28, 1999.

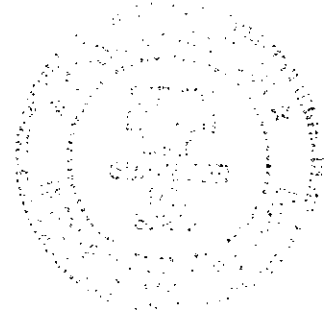
Traversed 10,460' off road.

APPROVED REMONUMENTATION CORNER
P.A. 345 OF 1990
ALLEGAN COUNTY
DATE APPROVED DEC. 28, 1999
COUNTY REP. [Signature]

C. Description of monument for corner and accessories established to perpetuate locating the position of the corner:
L-6 Allegan County Remonumentation iron and cap.

Azimuth = Michigan State Plane grid direction

6" Poplar, remonumentation tag in N side	262° 41'	29.91'
6" Poplar, remonumentation tag in NE side	310° 59'	39.96'
1/2" diameter steel bar with cap #37279	46° 17'	35.39'
1/2" diameter steel bar with cap #37279	140° 19'	33.85'



Signed by Steve Lampen

Date DECEMBER 31, 1999

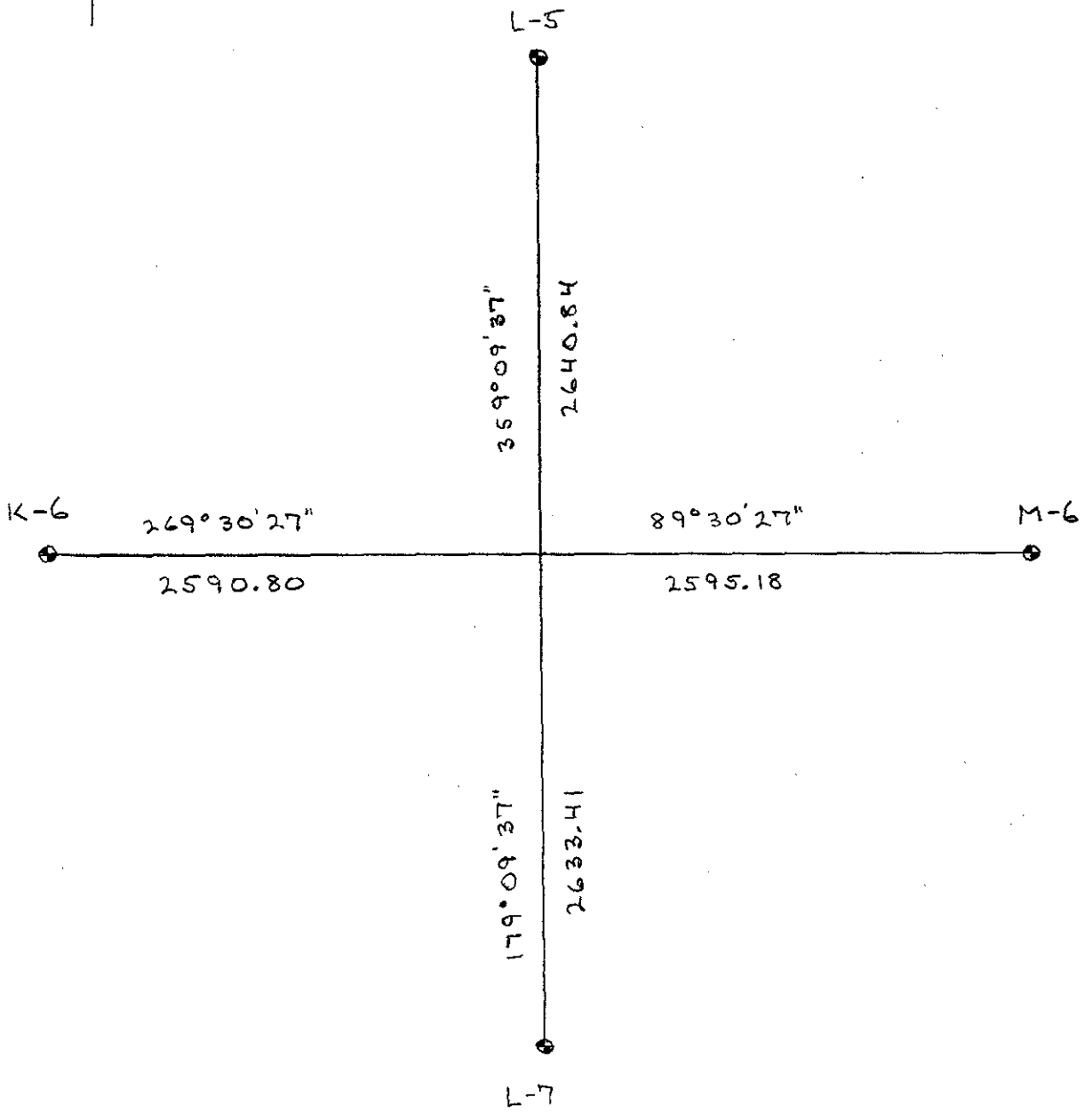
Surveyor's Michigan License No. 37279



RF

MAR 07 2000

SECTION



00000 / MAR 26 5