

MAR 07 2000

FILED

ALLEGAN COUNTY REMONUMENTATION
LAND CORNER RECORDATION CERTIFICATE
Filing Requirement of Act 74, Mich. P.A. 1970

00 FEB -1 AM 8:40

LIBR00007 PAGE 268

SECTION

For corners in
Allegan
(County)

Located In: Corner Code #

1. Public Land Survey T2N R16W L-8
T R
T R
T R
Central 1/4 corner
Section 24
Ganges Twp.

2. Property Controlling S T R
in Section S T R

3. Miscellaneous S T R
Property in Sec. S T R

4. Lot No. _____, Recorded Plat _____

5. Private Claims _____

Joyce A. Bette
REGISTER OF DEEDS
ALLEGAN COUNTY

Register of Deeds Stamp & File Number

I, Steve Lampen, in a field survey on December 22, 1999, do hereby certify that under requirements of P.A. 74, Michigan P.A. of 1970, the corner points mentioned in lines 1 and 2 above were in conformance with regulations and rules therefore as required in the current manual of survey instructions of the United States Department of the Interior, Bureau of Land Management or by a decree of a Court of Law and/or that the corner points mentioned in lines 3, 4 and 5 above were in conformance with the rules of the Michigan Board of Land Surveyors or by a Decree of a Court of Law; established, re-established, monumented, re-monumented, recovered, found as expressed below:

	A	B	C	D	E	F	G	H	I	J	K	L	M
1													
2	6	5	4	3	2	1							
3													
4	7	8	9	10	11	12							
5													
6	18	17	16	15	14	13							
7													
8	19	20	21	22	23	24							
9													
10	30	29	28	27	26	25							
11													
12	31	32	33	34	35	36							
13													

NOTE: Not more than 4 corners, all in the same town and range, may be recorded on this certificate.

A. Description of original monument and accessories and/or subsequent restoration:

L-8
GLO - Not set by Government
No records recovered

B. Description of corner evidence found and/or method applied in restoring or reestablishing corner:

L-8 No corner monumentation found, set Standard Allegan County 3/4"x36" remonumentation iron with red cap #23520 at the intersection of the 1/4 lines. See sketch on back.

Approved by the Allegan County Remonumentation Peer Group on December 28, 1999. This position not monumented by the original Government Surveyors. This monument is accepted as the best available evidence of the position of the corner.

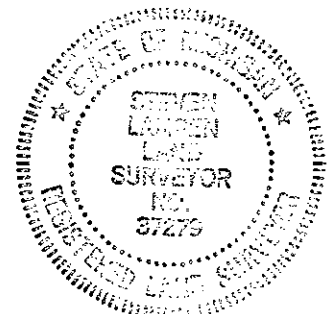
Traversed off road 5180' East and West and 5266' North and South.

APPROVED REMONUMENTATION CORNER
P.A. 345 OF 1990
ALLEGAN COUNTY

DATE APPROVED DEC. 28, 1999
COUNTY REP. *[Signature]*

C. Description of monument for corner and accessories established to perpetuate locating the position of the corner:

L-8
Standard Allegan County 3/4"x36" remonumentation iron with red cap #23520
1/2" diameter steel bar with cap #37279 334° 33.60
1/2" diameter steel bar with cap #37279 229° 28.41
6" Box Elder with remonumentation tag N side 122° 18.76
1/2" diameter steel bar with cap #37279 51° 31.2



Signed by Steven Lampen

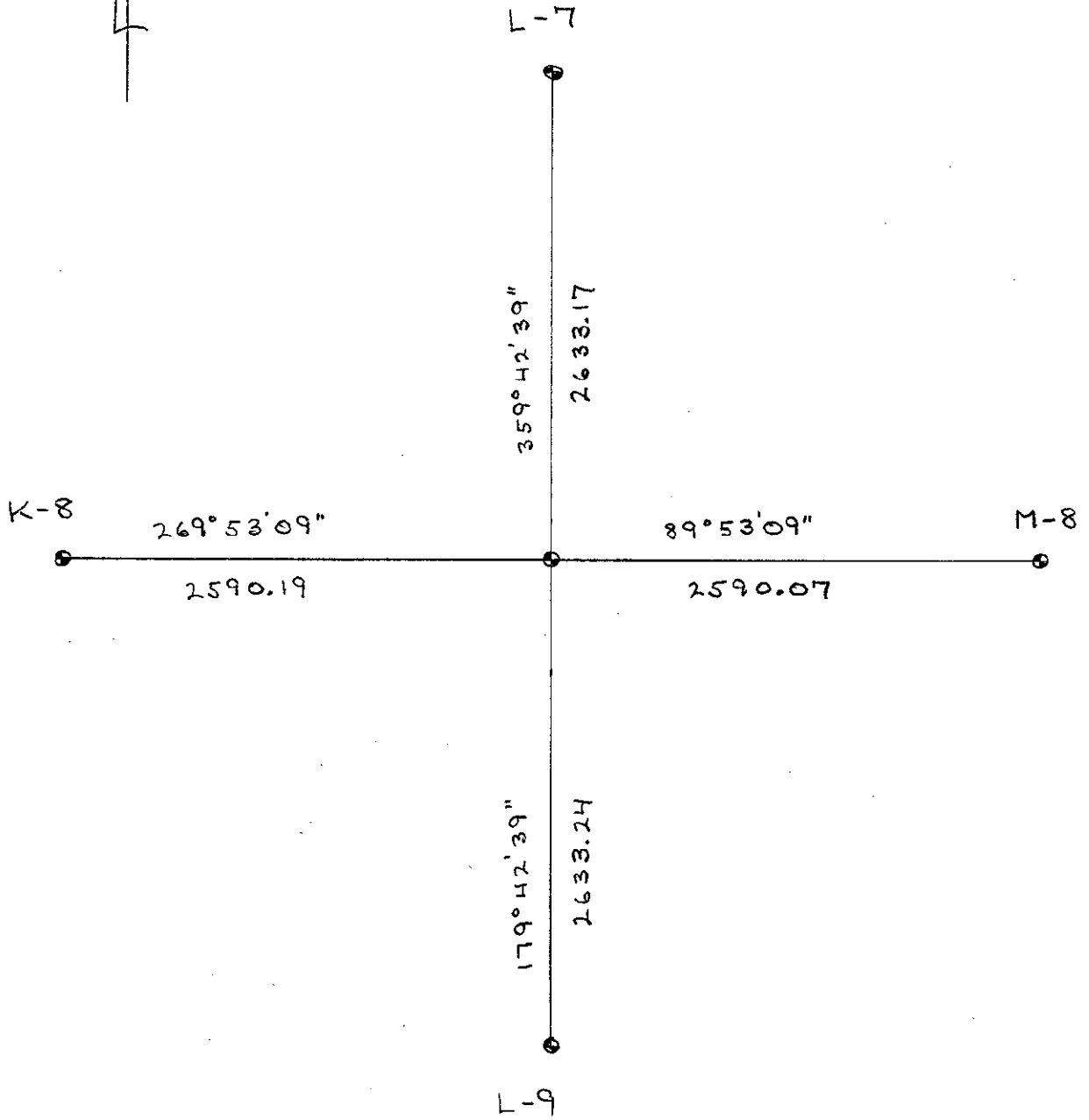
Date DECEMBER 31, 1999

Surveyor's Michigan License No. 37279

RE...

MAR 07 2000

SECTION



LIBRARY / MAR 26 9