

REF.

FILED

MAR 07 2000

ALLEGAN COUNTY REMONUMENTATION
LAND CORNER RECORDATION CERTIFICATE
Filing Requirement of Act 74, Mich. P.A. 1970

00 FEB -1 AM 8:40

SECTION

For corners in
Allegan _____
(County)

Located in: _____ Corner Code # _____

1. Public Land Survey T2N R16W L-10
T R
T R
T R
Central 1/4 corner
Section 25
Ganges Twp.

2. Property Controlling S T R
in Section S T R
Property in Sec. S T R

3. Miscellaneous S T R
Property in Sec. S T R

4. Lot No. _____, Recorded Plat _____

5. Private Claims _____

Joyce A. Dutton
REGISTER OF DEEDS
ALLEGAN COUNTY

Register of Deeds Stamp & File Number

	A	B	C	D	E	F	G	H	I	J	K	L	M
1													
2	6	5	4	3	2	1							
3													
4	7	8	9	10	11	12							
5													
6	18	17	16	15	14	13							
7													
8	19	20	21	22	23	24							
9													
10	30	29	28	27	26	25							
11													
12	31	32	33	34	35	36							

I, Steven Lampen _____, in a field survey on December 22, 1999, do hereby certify that under requirements of P.A. 74, Michigan P.A. of 1970, the corner points mentioned in lines 1 and 2 above were in conformance with regulations and rules therefore as required in the current manual of survey instructions of the United States Department of the Interior, Bureau of Land Management or by a decree of a Court of Law and/or that the corner points mentioned in lines 3, 4 and 5 above were in conformance with the rules of the Michigan Board of Land Surveyors or by a Decree of a Court of Law; established, re-established, monumented, re-monumented, recovered, found as expressed below:

NOTE: Not more than 4 corners, all in the same town and range, may be recorded on this certificate.

A. Description of original monument and accessories and/or subsequent restoration:
L-10
Not set by Government
No records recovered

B. Description of corner evidence found and/or method applied in restoring or reestablishing corner:
L-10 No corner monumentation found. Set Standard Allegan County 3/4"x36" remonumentation iron with red cap #23520 at the intersection of the 1/4 lines. See sketch on back

Approved by the Allegan County Remonumentation Peer Group on December 28, 1999.

This position not established by the original Government Surveyors. This monument is accepted as the best available evidence of the position of the corner.

Traversed off road 5222' E and W and 5254' N and S.

APPROVED REMONUMENTATION CORNER

P.A. 345 OF 1990

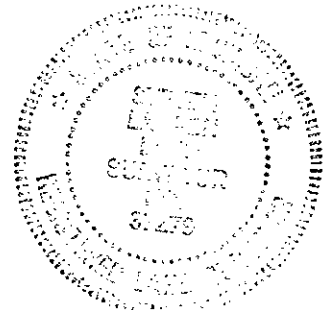
ALLEGAN COUNTY

DATE APPROVED DEC. 28, 1999

COUNTY REP. *[Signature]*

C. Description of monument for corner and accessories established to perpetuate locating the position of the corner:

- L-10 Standard Allegan County 3/4"x36" remonumentation iron with red cap #23520
- 4" Maple with remonumentation tag E side 30° 57.00'
- 8" Ash with remonumentation tag E side 204° 20.80'
- Centerline 4" steel pole 287° 35.4'
- 1/2" diameter steel bar with cap #37279 145° 28.6'



Signed by *Steven Lampen*

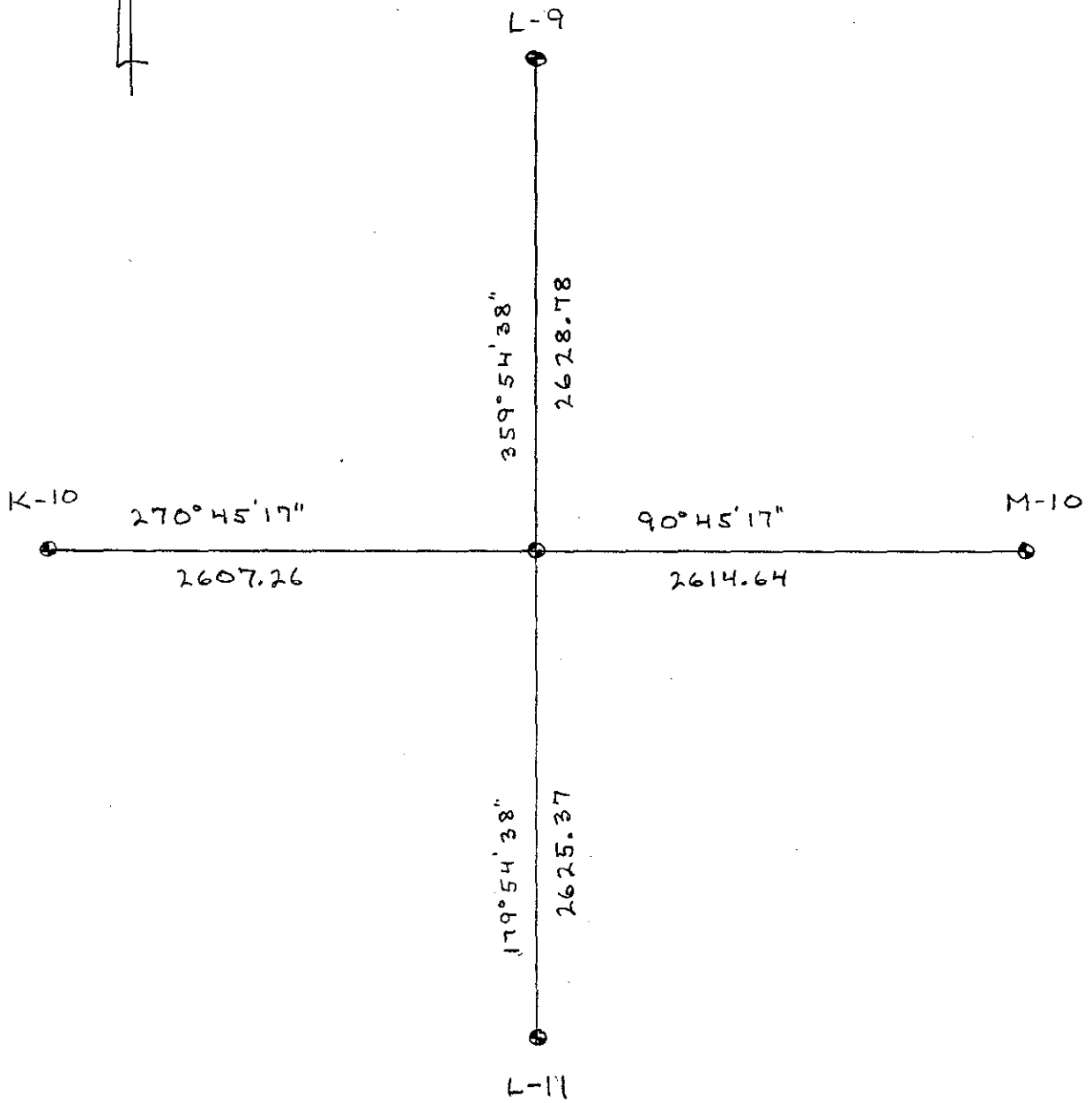
Date DECEMBER 31, 1999

Surveyor's Michigan License No. 37279

PROPERTY &
RECORDS SECTION

MAR 07 2000

SECTION



RECORD 007 PAGE 273