

SURVEY & REMONUMENTATION

APR 25 1995

ALLEGAN COUNTY REMONUMENTATION LAND CORNER RECORDATION CERTIFICATE Filing Requirement of Act 74, Mich. P.A. 1970

For corners in
COMMISSION
Allegan
(County)

	Located In:	Corner Code #:
1. Public Land Survey	T <u>3N</u> R <u>12W</u>	<u>C-4</u>
	T ___ R ___	<u>E 1/4 Cor.</u>
	T ___ R ___	<u>Sec. 7</u>
	T ___ R ___	<u>W 1/4 Cor.</u>
2. Property Controlling in Section	S ___ T ___ R ___	<u>Sec. 8</u>
	S ___ T ___ R ___	<u>Hopkins Twp.</u>
3. Miscellaneous Property in Sec.	S ___ T ___ R ___	_____
	S ___ T ___ R ___	_____

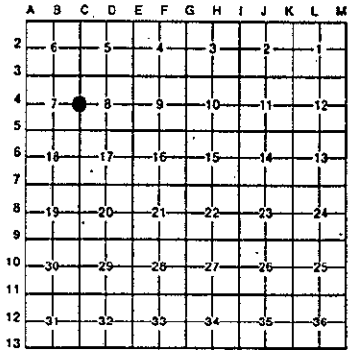
Register of Deeds
 ALLEGAN COUNTY MICHIGAN
Jasper A. [Signature]

1994 DEC 30 PM 12: 15

FILED

Register of Deeds Stamp & File Number

4. Lot No. _____, Recorded Plat _____
 5. Private Claims _____



I, Kirk Van Order, in a field survey on April 22, 1994, do hereby certify that under requirements of P.A. 74, Michigan P.A. of 1970, the corner points mentioned in lines 1 and 2 above were in conformance with regulations and rules therefore as required in the current manual of survey instructions of the United States Department of the Interior, Bureau of Land Management or by a decree of a Court of Law and/or that the corner points mentioned in lines 3, 4 and 5 above were in conformance with the rules of the Michigan Board of Land Surveyors or by a Decree of a Court of Law; established, re-established, monumented, re-monumented, recovered, found as expressed below:

NOTE: Not more than 4 corners, all in the same town and range, may be recorded on this certificate.

A. Description of original monument and accessories and/or subsequent restoration:

- C-4
 •GLO set post at 40.00 chains North of C-5.
 18" Beech S21°E 26 links
 10" Sugar S73°W 23 links
 •Old notes, Gardner, shows stone set at corner, Feb. 14, 1878.
 •LCRC (L. 2, P. 71) 11-22-1972
 Set 1/2" iron w/cap over point of stone (later LCRC indicates ties gone)
 •LCRC (L. 3, P. 77) 1-12-1976
 Iron fd. (later LCRC indicates only PK nail in P. Pole survives)

B. Description of corner evidence found and/or method applied in restoring or reestablishing corner:

C-4
 Used LCRC ties as recorded in Liber 3 on Page 351 to verify corner position. Fd. 1/2" rerod 18" long with red cap inscribed R.L.S. 30075 (did not find stone below).

And is accepted as a careful and faithful perpetuation of the position of the original corner.

Peer Group approved 5-10-94.

APPROVED REMONUMENTATION CORNER
 P.A. 345 OF 1990
 ALLEGAN COUNTY
 DATE APPROVED 5-10-94
 COUNTY REP. Kirk Van Order

C. Description of monument for corner and accessories established to perpetuate locating the position of the corner:

C-4
 Set standard Allegan Co. Remon. monument (3/4" x 24" steel rod w/red cap #23520)
 SE corner hse. foundation AZ. 218° 241.41'
 NE corner hse. foundation AZ. 235°34' 169.44'
 Nail & Remon. tag in S side Power Pole AZ. 263°32' 236.45'
 Nail & Remon. tag in SW side Power Pole AZ. 284°40' 233.94'
 Nail & Remon. tag in SE side Power Pole AZ. 50°02' 64.85'

Signed by [Signature] Date 12-30-94
 Surveyor's Michigan License No. 23520

0005 PAGE 092