

**SURVEY & REMONUMENTATION**

2 ✓  
9-  
2

APR 07 1998

**SECTION**

**ALLEGAN COUNTY REMONUMENTATION  
LAND CORNER RECORDATION CERTIFICATE  
Filing Requirement of Act 74, Mich. P.A. 1970**

For corners in

ALLEGAN (County)	Located in:	Corner Code #
1. Public Land Survey	T-3N R-13W T- R- T- R- T-2N R-13W	<u>G-13</u> SW 34 MONTEREY TWP G-1 NW 3 ALLEGAN TWP
2. Property Controlling in Section	S- T- R- S- T- R- S- T- R-	
3. Miscellaneous Property in Sec.	S- T- R- S- T- R-	
4. Lot No. _____, Recorded Plat _____		
5. Private Claims _____		

*James L. Carter*  
REGISTER OF DEEDS  
ALLEGAN COUNTY, MICH.

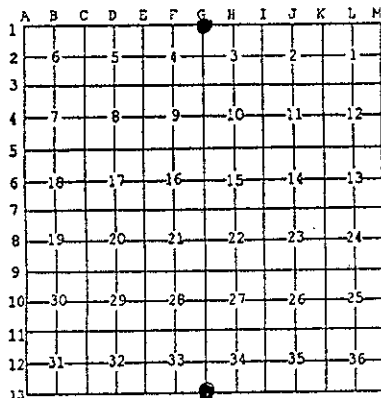
98 JAN 21 PM 1:17

FILED

Register of Deeds Stamp & File Number

I, ARTHUR W. BRINTNALL, in a field survey on 17 OCT 19 97 do hereby state that under requirements of P.A. 74, Michigan P.A. of 1970, the corner points mentioned in lines 1 and 2 above were in conformance with regulations and rules therefore as required in the current manual of survey instructions of the United States Department of the Interior, Bureau of Land Management or by a decree of a Court of Law and/or that the corner points mentioned in lines 3, 4 and 5 above were in conformance with the rules of the Michigan Board of Land Surveyors or by a Decree of a Court of Law, established, re-established, monumented, recovered, found as expressed below:

NOTE: Not more than 2 corners, all in the same town and range, may be recorded on this certificate.



**A. Description of original monument and accessories and/or subsequent restoration:**

G-13 (T 3N, R13W) G.L.O. WEST SOUTH SIDE SEC-34, T-3N, R-13W 80.00 SET POST CORNER SECS 33 & 34 TAMARACK 15 N86E 42 TAMARACK 14 N82W 37	AUG 20, 1869 J.W. HICKS, CO SURVEYOR SURVEY OF SE 1/4 SEC-33 (2662.44') 40.34 NORTH TO E 1/4 COR G-13 & G-1 ARE COMMON
--	---

CONT. ON BACK OF CERTIFICATE

**B. Description of corner evidence found and/or method applied in restoring or reestablishing corner:**

G-13 & G-1  
FD 3/4" IRON  
- 16D N SDE 6" ALDER WEST 7.83'  
- 16D W SDE 12" ELM NORTH 12.87'  
- 16D E SDE 14" ELM SOUTH 25.56'  
- 16D NE 20" TAMARACK NW 68.13'  
- IN LINE WITH OLD DOWN FE TO N & W

APPROVED REMONUMENTATION CORNER  
P.A. 345 OF 1990  
ALLEGAN COUNTY  
DATE APPROVED 10-14-97  
COUNTY REP. K.V.O.

REPLACED WITH STD ALLEGAN CO. MON. (3/4"X36" IRON WITH CAP) AND IS ACCEPTED AS A CAREFUL AND FAITHFUL PERPETUATION OF THE POSITION OF THE ORIGINAL CORNER.

APPROVED BY ALLEGAN CO. PEER GROUP 14 OCT 97

**C. Description of monument for corner and accessories established to perpetuate locating the position of the corner:**

G-1 & G-13  
STD ALLEGAN CO. MON (3/4"X36" IRON W/CAP)  
- 16D & REMON TAG N SDE 6" ALDER WEST 7.85'  
- 16D & REMON TAG W SDE 12" ELM NORTH 12.85'  
- 16D & REMON TAG E SDE 14" ELM SOUTH 25.54'  
- 16D & REMON TAG E ROOT 20" TAMARACK N40°W 67.00'  
- IN LINE W/ OLD DOWN FE TO N & W



Signed by Arthur W. Brintnall Date Oct 29, 1997  
PREIN & NEWHOF  
Surveyor's Michigan License No. #28407

0006 Part 016

SHEET 1 OF 2