

**SURVEY
REMONUMENTATION**

APR 29 1998

SECTION

**ALLEGAN COUNTY REMONUMENTATION
LAND CORNER RECORDATION CERTIFICATE
Filing Requirement of Act 74, Mich. P.A. 1970**

For corners in

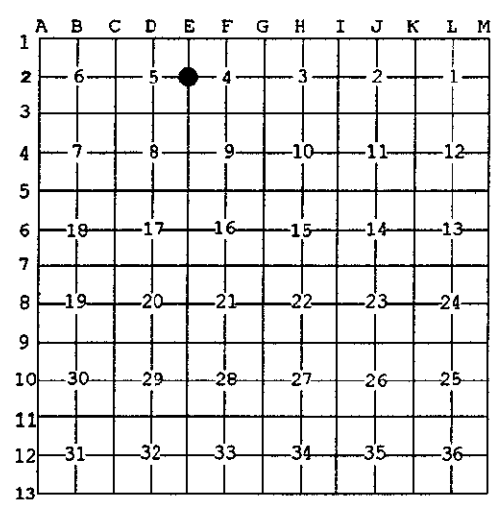
Allegan (County)	Located in:	Corner Code #
1. Public Land Survey	T 3N R 14W	E-2
	T R	Heath Twp.
	T R	
	T R	
2. Property Controlling in Section	S T R	
	S T R	
3. Miscellaneous Property in Sec.	S T R	
	S T R	

FILED
1/28/1999 2:44:39 PM
JOYCE A. WATTS
REGISTER OF DEEDS
ALLEGAN COUNTY, MICH
Register of Deeds Stamp & File Number

LIBERO 006 PAGE 17

4. Lot No. _____, Recorded Plat _____
5. Private Claims _____

I, Kirk L. Van Order, in a field survey on Mar. 2, 1998 do hereby state that under requirements of P.A. 74, Michigan P.A. of 1970, the corner points mentioned in lines 1 and 2 above were in conformance with regulations and rules therefore as required in the current manual of survey instructions of the United States Department of the Interior, Bureau of Land Management or by a decree of a Court of Law and/or that the corner points mentioned in lines 3, 4 and 5 above were in conformance with the rules of the Michigan Board of Land Surveyors or by a Decree of a Court of Law, established, re-established, monumented, recovered, found as expressed below:



NOTE: Not more than 2 corners, all in the same town and range, may be recorded on this certificate.

A. Description of original monument and accessories and/or subsequent restoration:

E-2
(1) GLO Calvin Britain D.S. 1831
North between Sections 4 & 5
40.00 ch. set quarter section post
Beech 9" dia. S74°W 26 links
W. Oak 20" dia. S23°E 32 links
(continued on back of sheet)

APPROVED REMONUMENTATION CORNER
P.A. 345 OF 1990
ALLEGAN COUNTY
DATE APPROVED MARCH 10, 1998
COUNTY REP. [Signature]

B. Description of corner evidence found and/or method applied in restoring or reestablishing corner:

E-2
Fd. 3/4" x 10" steel rod in monument box and the following witnesses:
20" Hickory N 79.45'
P. pole S30°E 60.20'
C/L road N5.0' (measures North 4.2'+/- to C/L asphalt surface)

And is accepted as a careful and faithful perpetuation of the position of the original corner.

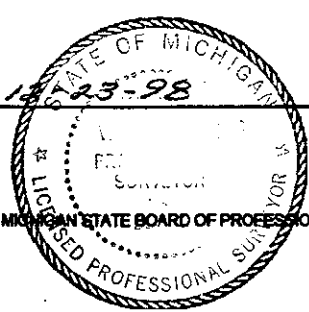
Peer group approved March 10, 1998.

C. Description of monument for corner and accessories established to perpetuate locating the position of the corner:

E-2
Replaced steel rod and set standard Allegan Co. Remon. monument (3/4" x 24" steel rod w/red cap #23520) in mon. box
Nail & Remon. tag in E side 29" hickory AZ 00° 79.97'
Nail & Remon. tag in W side 25" boxelder AZ 05° 28.27'
Nail & Remon. tag in SW side 22" boxelder AZ 320° 50.45'
Nail & Remon. tag in NE side power pole AZ 155° 60.32'
C/L asphalt road AZ 00° 4.2' +/-

Signed by [Signature]
Surveyor's Michigan License No. 23520

Date 12-23-98



SURVEY
REMONUMENTATION

APR 29 1953

SECTION

LIBR0006 PAGE 18

Section A (continued from Page 1)

E-2

Heath Twp., T.3N., R.14W.

- (2) LCRC recorded in L. 1, P. 377 Donald A. Ratekin July 28, 1972
Part "A"

1" iron over stone (1969)		
20" hickory	N	79.45'
St. sign	N,NW	20.00'
14" maple	S,SE	36.25'
Power pole	SE	39.25'

Part "C"

Fd. 1" iron		
20" hickory	N	79.45'
St. sign	N10°W	20.00'
16" maple	S10°E	63.25'
P. pole	S30°E	60.20'
C/L road	N	5.0'

- (3) LCRC recorded in L. 2, P. 75 Donald A. Ratekin Dec. 15, 1972
Same as LCRC, L. 1, P. 377

- (4) Holland Eng., Inc.

1" iron		
20" hickory	N	79.45'
16" maple	S,SE	63.25'
PP	SE	60.20'
C/L road	N	5.00'