

REMONUMENTATION

APR 25 1995

COMMISSION

ALLEGAN COUNTY REMONUMENTATION LAND CORNER RECORDATION CERTIFICATE Filing Requirement of Act 74, Mich. P.A. 1970

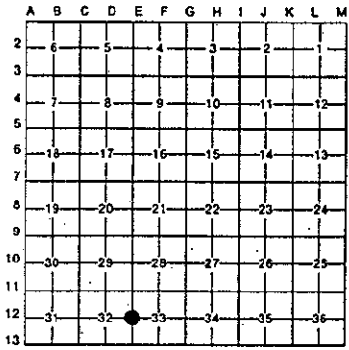
1994 DEC 30 PM 12:15 REGISTER OF DEEDS ALLEGAN COUNTY MICHIGAN

FILED

Table with columns: For corners in (Allegan County), Located In, Corner Code. Includes entries for Public Land Survey, Property Controlling in Section, and Miscellaneous Property in Sec.

Register of Deeds Stamp & File Number

4. Lot No. Recorded Plat
5. Private Claims



I, Kirk Van Order, in a field survey on March 2, 1994, do hereby certify that under requirements of P.A. 74, Michigan P.A. of 1970, the corner points mentioned in lines 1 and 2 above were in conformance with regulations and rules therefore as required in the current manual of survey instructions of the United States Department of the Interior, Bureau of Land Management or by a decree of a Court of Law and/or that the corner points mentioned in lines 3, 4 and 5 above were in conformance with the rules of the Michigan Board of Land Surveyors or by a Decree of a Court of Law; established, re-established, monumented, re-monumented, recovered, found as expressed below:

NOTE: Not more than 4 corners, all in the same town and range, may be recorded on this certificate.

A. Description of original monument and accessories and/or subsequent restoration:

- E-12
•GLO set corner in swamp
40.00 chains North of E-13
No witnesses given
•No LCRC
•No recorded surveys

APPROVED REMONUMENTATION CORNER P.A. 345 OF 1990 ALLEGAN COUNTY DATE APPROVED 3-9-94 COUNTY REP.

B. Description of corner evidence found and/or method applied in restoring or reestablishing corner:

- E-12
No corner marker found.
Set corner midway and on line between E-13 and E-11
E-13 N.00°39'31"E. 2618.80' to E-12
E-12 N.00°39'31"E. 2618.80' to E-11

And is accepted as a careful and faithful reestablishment of the position of the original corner.

Peer Group approved 3-9-94.
Traversed 5237.6 feet. (off road)

C. Description of monument for corner and accessories established to perpetuate locating the position of the corner:

- E-12
Set standard Allegan Co. Remon. monument (3/4" x 36" steel rod w/red cap #23520)
Nail & Remon. tag in S side 8" Ash East 6.62'
Nail & Remon. tag in W side Twin 16" Maple S20°E 27.21'
Nail & Remon. tag in N side 9" Ash West 28.70'
Nail & Remon. tag in SE side 20" Ash N15°E 33.93'

Signed by [Signature] Date 12-30-94
Surveyor's Michigan License No. 23520