

**SURVEY
REMONUMENTATION**

APR 29 1999

ALLEGAN COUNTY REMONUMENTATION
LAND CORNER RECORDATION CERTIFICATE
Filing Requirement of Act 74, Mich. P.A. 1970

SECTION

For corners in

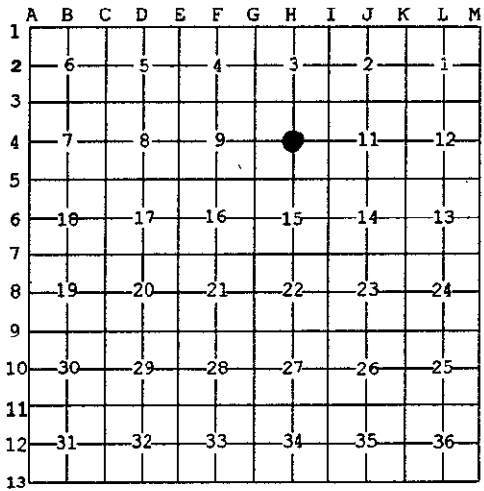
Allegan (County)	Located In:	Corner Code #
1. Public Land Survey	T 3N R 14W	H-4
	T R	Heath Twp.
	T R	
	T R	
2. Property Controlling in Section	S T R	
	S T R	
3. Miscellaneous Property in Sec.	S T R	
	S T R	

FILED
1/28/1999 2:44:39 PM
JOYCE A. WATTS
REGISTER OF DEEDS
ALLEGAN COUNTY, MICH
Register of Deeds Stamp & File Number

LIBER 006 PAGE 35

4. Lot No. _____, Recorded Plat _____
5. Private Claims _____

I, Kirk L. Van Order, in a field survey on July 10, 1998 do hereby state that under requirements of P.A. 74, Michigan P.A. of 1970, the corner points mentioned in lines 1 and 2 above were in conformance with regulations and rules therefore as required in the current manual of survey instructions of the United States Department of the Interior, Bureau of Land Management or by a decree of a Court of Law and /or that the corner points mentioned in lines 3, 4 and 5 above were in conformance with the rules of the Michigan Board of Land Surveyors or by a Decree of a Court of Law, established, re-established, monumented, recovered, found as expressed below:



NOTE: Not more than 2 corners, all in the same town and range, may be recorded on this certificate.

A. Description of original monument and accessories and/or subsequent restoration:

H-4
(1) Not set by GLO
(2) Kirk L. Van Order, R.L.S. survey, Liber 1074, Page 253, dated Mar. 23, 1984
Set capped iron No. 23520 at intersection of 1/4 lines
8" hickory NE 22.68'
13" white oak SE 56.39'
11" white oak W.,SW 58.97' (continued on back of sheet)

B. Description of corner evidence found and/or method applied in restoring or reestablishing corner:

H-4
Fd. 1/2" re-rod
Fd. nail in NW side hickory NE 21.93'
Fd. nail in N side ash W.,NW 17.14'
Fd. nail in SE side ash S.,SW 45.15'
Fd. nail in W side pig nut hickory N.,NE 44.05'
C/L 13" white oak SE 57'
4" white oak NW 69.6' (continued on back of sheet)

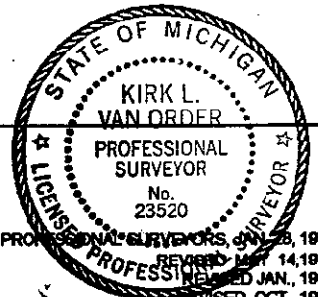
APPROVED REMONUMENTATION CORNER
P.A. 345 OF 1990
ALLEGAN COUNTY
DATE APPROVED JULY 14, 1998
COUNTY REP. [Signature]

C. Description of monument for corner and accessories established to perpetuate locating the position of the corner:

H-4
Set standard Allegan Co. Remon. monument (3/4" x 36" steel rod w/red cap #23520)
Nail & Remon. tag in N side 19" white oak AZ 106°05' 54.97'
Nail & Remon. tag in SE side power pole AZ 219°54' 57.38'
Nail & Remon. tag in SW side 14" white oak AZ 296°26' 71.94'
Nail & Remon. tag in NE side power pole AZ 336°02' 93.12'

Signed by [Signature]
Surveyor's Michigan License No. 23520

Date 12-23-98



SURVEY
REMONUMENTATION

APR 29 1998

SECTION

LIBERO 006 PAGE 36

Section A (continued from Page 1)

H-4

Heath Twp., T.3N., R.14W.

- 11" white oak NW 70.16'
C/L 2-track road West 6'
- (3) Kirk L. Van Order, R.L.S. survey, Liber 1142, Page 548, dated Aug. 29, 1985
Fd. capped iron
(Same wit. ties as in No. 2)
Plus - fence line West

Section B

- (1) Fd. 1/2" re-rod to be N. 09°-21'-08" W. 2.42 feet of intersection of 1/4 lines. Set capped iron at inter-x of 1/4 lines.
- (2) Kirk L. Van Order remon. survey, after road construction, dated July 10, 1998 did not find capped iron set on May 1, 1998. Set standard Allegan County monument at intersection of 1/4 lines. This position not established by original government surveyors. This monument is accepted as the best available evidence of the position of the corner.
- | | | | |
|------------|-------------------|----------|-------------------|
| H-4 to H-3 | N. 00°-05'-21" W. | 2641.82' | on road traverse |
| H-4 to H-5 | S. 00°-05'-21" E. | 2645.59' | on road traverse |
| H-4 to G-4 | S. 89°-04'-44" W. | 2630.37' | off road traverse |
| H-4 to I-4 | N. 89°-04'-44" E. | 2626.42' | off road traverse |

Peer group approved July 14, 1998.