

LAND CORNER RECORDATION CERTIFICATE
Filing Requirement of Act 74, Mich. P.A. 1970

For corners in
Allegan
(County)

Located In: _____ Corner Code ~~##~~ _____

1. Public Land Survey	T	<u>3W</u>	R	<u>14W</u>	<u>E9</u>
	T	_____	R	_____	_____
	T	_____	R	_____	_____
	T	_____	R	_____	_____
2. Property Controlling in Section	S	<u>20</u>	T	<u>3W</u>	R <u>14W</u>
	S	<u>20</u>	T	<u>3W</u>	R <u>14W</u>
3. Miscellaneous Property in Sec.	S	_____	T	_____	R _____
	S	_____	T	_____	R _____

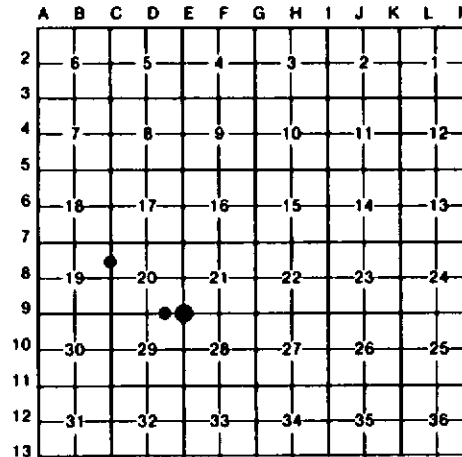
Register of Deeds Stamp & File Number

4. Lot No. _____, Recorded Plat _____
 5. Private Claims _____

3 October 14, 1992
 16 October 14, 1992

I, Gary C. Bilow, in a field survey on E9 September 11, 1992, 19_____, do hereby certify that under requirements of P.A. 74, Michigan P.A. of 1970, the corner points mentioned in lines 1 and 2 above were in conformance with regulations and rules therefore as required in the current manual of survey instructions of the United States Department of the Interior, Bureau of Land Management or by a decree of a Court of Law and/or that the corner points mentioned in lines 3, 4 and 5 above were in conformance with the rules of the Michigan Board of Land Surveyors or by a Decree of a Court of Law; established, re-established, monumented, re-monumented, recovered, found as expressed below:

NOTE: Not more than 4 corners, all in the same town and range, may be recorded on this certificate.



A. Description of original monument and accessories and/or subsequent restoration:

E9: Post established by U.S. Deputy Surveyor C. Britain in 1831 - accessories: Pine 9, N58E, 9 links and Beech 11, N87W, 26 links. County Surveyor H. MacDougall recorded a Stone at this corner but no witnesses in 1907. Corner recorded under Act 74 PA 1970 by D. Greer (LS #16042) in Liber 4 Page 1 as "Found 3/4" Iron in centerline roads - accessories: 20" Oak, SW, 137.05'; Power Pole, SE, 54.12'; Street Sign, NNE, 14.8'; Corner is in centerline gravel roads."
16: Corner established by J. Clapp (LLS 14091) midway on line between corners D9 and E9 in May 1986 for a survey performed in Section 29 - accessories: S56E 40.65', Nail in Power Pole; S23E 43.58', Nail in 8" Oak; S57W 52.59', Nail in 18" Oak; N60W 56.34', Nail in 8" Pine.
3: No record found for this corner.

B. Description of corner evidence found and/or method applied in restoring or reestablishing corner:

E9: Found 3/4" Iron and two (2) of Greer's witnesses. Accepted this corner as the best evidence of the original GLO post.
16: Found 1" Iron bar midway on line between corners D9 and E9 and two (2) of Clapp's witnesses. Accepted this corner.
3: Corner established equidistant between corners C7 and C8 and the on line formed between General Land Office line tree call and corner C8.

C. Description of monument for corner and accessories established to perpetuate locating the position of the corner:

E9: Found 3/4" Iron in centerline of gravel roads S35W 137.05', Nail & Tag in 20" Oak S32E 54.12', PK nail in Power Pole S5E 57.5', Stop Sign post S23E 63.1', Guy wire at ground	16: Found 1" Iron bar S58W 52.64', Nail in 19" Oak S55E 40.73', Nail in Power pole S26E 50.87', Spike & Tag in 18" Oak S3E 37.2', Northeast corner Driveway	3: Set 1/2" x 36" rebar encased in 4" diameter concrete cylinder and capped with a cast aluminum Michigan Department of Natural Resources Tablet N30E 15.19', Spike & Tag in 5" Maple N88E 12.63', Spike & Tag in 9" Oak N85W 8.88', Spike & Tag in 7" Oak N13W 14.26', Spike & Tag in 8" Oak Southeast 0.7', Steel fence post
--	--	--

Signed by Gary C. Bilow Date 12/15/92
 Surveyor's Michigan License No. 26453

1175