

LAND CORNER RECORDATION CERTIFICATE
Filing Requirement of Act 74, Mich. P.A. 1970

For corners in

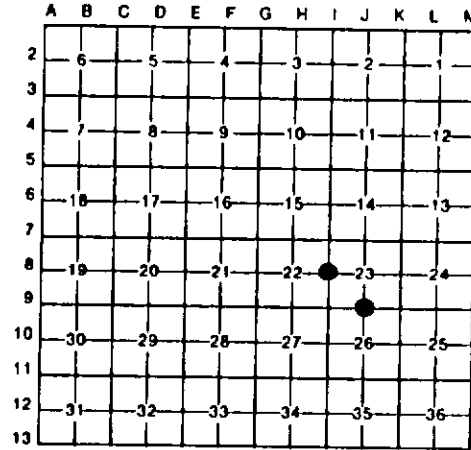
<u>Allegan County</u> <small>(County)</small>	Located In:	Corner Code <u>11</u>
1. Public Land Survey	T 3N R 15W	I-8
	T 3N R 15W	J-9
	T _____ R _____	_____
	T _____ R _____	_____
2. Property Controlling in Section	S _____ T _____ R _____	_____
	S _____ T _____ R _____	_____
3. Miscellaneous Property in Sec.	S _____ T _____ R _____	_____
	S _____ T _____ R _____	_____

Register of Deeds Stamp & File Number

4. Lot No. _____, Recorded Plat _____
 5. Private Claims _____

I, Gary C. Bilow, in a field survey on _____, 19____, do hereby certify that under requirements of P.A. 74, Michigan P.A. of 1970, the corner points mentioned in lines 1 and 2 above were in conformance with regulations and rules therefore as required in the current manual of survey instructions of the United States Department of the Interior, Bureau of Land Management or by a decree of a Court of Law and/or that the corner points mentioned in lines 3, 4 and 5 above were in conformance with the rules of the Michigan Board of Land Surveyors or by a Decree of a Court of Law, established, re-established, monumented, re-monumented, recovered, found as expressed below:

NOTE: Not more than 4 corners, all in the same town and range, may be recorded on this certificate.



A. Description of original monument and accessories and/or subsequent restoration:

(I-8) Post set by U.S. Government General Land Office Deputy Surveyor C. Britain, May 1832.
 Accessories: Maple 7" N80°E 30 l. - Maple 10" S51°W 14 l.

(J-9) Post set by U.S. Government General Land Office Deputy Survey C. Britain, May 1832.
 Accessories: Elm 9" N50°E 12 l. - Elm 18" S31°W 28 l.

B. Description of corner evidence found and/or method applied in restoring or reestablishing corner:

(I-8) Corner reestablished Feb. 1977 by Department of Natural Resources Surveyor Donald L. Bissell, RLS 18655 by single proportionate measurement based on G.L.O. record between I-7 and I-9.

(J-9) Corner reestablished Feb. 1977 by Michigan Department of Natural Resources Surveyor Donald L. Bissell, RLS 18655 by single proportionate measurement based on G.L.O. record between I-9 and K-9.

C. Description of monument for corner and accessories established to perpetuate locating the position of the corner:

(I-8) Set 1" pipe with plastic cap # 18655	(J-9) Set 1/2" pipe with plastic cap # 18655
N81°W 20.20' 10" Maple PK, tag and blaze	S03°W 11.44' 7" ash PK, tag and blaze
N27°E 11.72' 10" Maple PK, tag and blaze	N28°W 46.72' 10" Ash PK, tag and blaze
N78°E 19.17' 9" Ash PK, tag and blaze	N53°E 28.60' 5" Ash PK, tag and blaze
S20°E 28.10' 14" Maple PK, tag and blaze	



Signed by Gary C. Bilow Date _____
 Surveyor's Michigan License No. 26453