

LAND CORNER RECORDATION CERTIFICATE
Filing Requirement of Act 74, Mich. P.A. 1970

For corners in

..... Allegan County (County) Located In: Corner Code 11

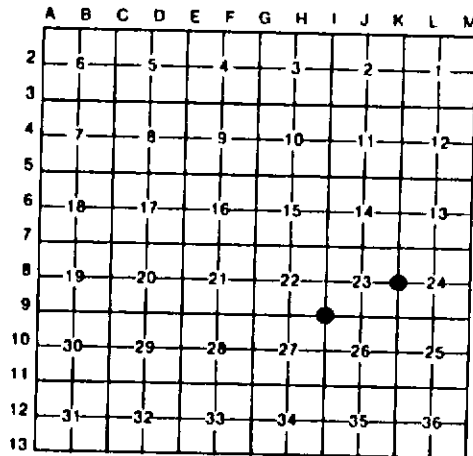
1. Public Land Survey	T	<u>3N</u>	R	<u>15W</u>	<u>K-8</u>
	T	<u>3N</u>	R	<u>15W</u>	<u>I-9</u>
	T	_____	R	_____	_____
	T	_____	R	_____	_____
2. Property Controlling in Section	S	_____	T	_____	_____
	S	_____	T	_____	_____
3. Miscellaneous Property in Sec.	S	_____	T	_____	_____
	S	_____	T	_____	_____

Register of Deeds Stamp & File Number

4. Lot No. _____, Recorded Plat _____
 5. Private Claims _____

1. Gary C. Bilow in a field survey on _____, 19____ do hereby certify that under requirements of P.A. 74, Michigan P.A. of 1970, the corner points mentioned in lines 1 and 2 above were in conformance with regulations and rules therefore as required in the current manual of survey instructions of the United States Department of the Interior, Bureau of Land Management or by a decree of a Court of Law and/or that the corner points mentioned in lines 3, 4 and 5 above were in conformance with the rules of the Michigan Board of Land Surveyors or by a Decree of a Court of Law, established, re-established, monumented, re-monumented, recovered, found as expressed below:

NOTE: Not more than 4 corners, all in the same town and range, may be recorded on this certificate.



A. Description of original monument and accessories and/or subsequent restoration:

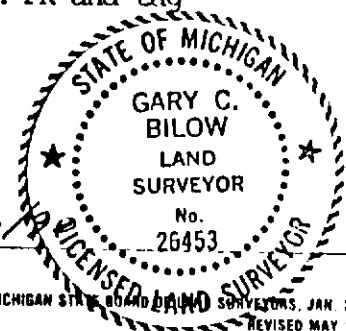
(K-8) Post set by U.S. Government General Land Office Deputy Surveyor C. Britain, May 1832. Accessories: Cedar 7" S87°E 21 l. - Elm 7" N12°W 25 l.
 (I-9) Post set by U. S. Government General Land Office Deputy Surveyor C. Britain, May 1832. Accessories: Maple 7" S15°E 27 l. - Maple 10" S76°W 25 l.
 Corner recorded under Act 74 by Russell L. Roon, RLS 13593, 14 July 1972, in L.1, P. 350 of corner records as 1/2" pipe. Accessories: 12" Ash NE 13.92' 6" Maple West 23.41' - 10" Maple SE 14.26'

B. Description of corner evidence found and/or method applied in restoring or reestablishing corner:

(K-8) Corner reestablished Feb. 1977 by Michigan Department of Natural Resources Surveyor Donald L. Bissell, RLS 18655 at old fence corner.
 (I-9) Corner recovered as recorded in Feb. 1977 by Michigan Department of Natural Resources Surveyor Donald L. Bissell, RLS 18655 who set 1" pipe over found 1/2" pipe and established new accessories.

C. Description of monument for corner and accessories established to perpetuate locating the position of the corner:

(K-8) Set 1" x 48" pipe with plastic cap # 18655	(I-9) Set 1" pipe with plastic cap# 18655
S68°W 26.20' 8" Maple PK and blaze	N32°E 14.47' 13" Ash PK and tag
N02°W 3.90' 10" Maple PK and blaze	S22°W 32.89' 10" Ash PK and tag
S14°E 26.10' 16" Maple PK and blaze	S83°W 74.60 16" Ash PK and tag
N50°E 16.45' 18" Ash PK and blaze	75.60'



Signed by Gary C. Bilow Date 8/23/79
 Surveyor's Michigan License No. 26453