

**ALLEGAN COUNTY REMONUMENTATION
LAND CORNER RECORDATION CERTIFICATE**
Filing Requirement of Act 74, Mich. P.A. 1970

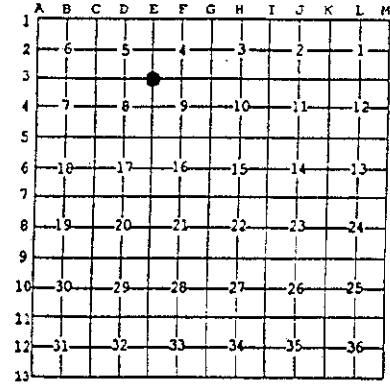
For corners in

<u>Allegan</u> (County)	Located in:	Corner Code #
1. Public Land Survey	T <u>3N</u> R <u>15W</u>	<u>E-3 (SW. 4)</u>
	T <u> </u> R <u> </u>	<u>Manlius Twp.</u>
	T <u> </u> R <u> </u>	_____
	T <u> </u> R <u> </u>	_____
2. Property Controlling in Section	S <u> </u> T <u> </u> R <u> </u>	_____
	S <u> </u> T <u> </u> R <u> </u>	_____
3. Miscellaneous Property in Sec.	S <u> </u> T <u> </u> R <u> </u>	_____
	S <u> </u> T <u> </u> R <u> </u>	_____
4. Lot No. _____, Recorded Plat _____		
5. Private Claims _____		

97 JAN 22 PM 1:26
 REGISTER OF DEEDS
 ALLEGAN COUNTY
 REGISTER OF DEEDS STAMP & FILE NUMBER

I, Kirk L. Van Order, in a field survey on Sept. 10, 1996 do hereby state that under requirements of P.A. 74, Michigan P.A. of 1970, the corner points mentioned in lines 1 and 2 above were in conformance with regulations and rules therefore as required in the current manual of survey instructions of the United States Department of the Interior, Bureau of Land Management or by a decree of a Court of Law and/or that the corner points mentioned in lines 3, 4 and 5 above were in conformance with the rules of the Michigan Board of Land Surveyors or by a Decree of a Court of Law, established, re-established, monumented, recovered, found as expressed below:

NOTE: Not more than 2 corners, all in the same town and range, may be recorded on this certificate.



A. Description of original monument and accessories and/or subsequent restoration:

- E-3
- (1) GLO North between Sec. 8 & 9 80.00 chains
Set post corner Sec. 4, 5, 8 & 9
Sugar 12 S52°E 18 links
Beech 12 S53°W 15 links
 - (2) J.W. Hicks survey Sec. 4 dated Nov. 1, 2, 3, 4 & 5 A.D. 1875.
Does not show what he found at E-3, but shows a distance of
40.19 chains = 2652.54' to F-3
- (continued on back of sheet)

B. Description of corner evidence found and/or method applied in restoring or reestablishing corner:

E-3
Kirk L. Van Order Remon. survey Sept. 10, 1996
Fd. 1" dia. steel carriage bolt 28" long with 2" dia. head approx.
1 foot below ground, I believe this to be the iron set by T.O.
Williams
Computed & measured the following distances:
East 2652.47' to F-3 off road traverse.
East 5322.28' to G-3
South 2649.30' to E-4
South 5298.60' to E-5
North 2656.26 to E-2

(continued on back of sheet)

APPROVED REMONUMENTATION CORNER
P.A. 345 OF 1990
ALLEGAN COUNTY
DATE APPROVED 10-8-96
COUNTY REP. Kirk L. Van Order

C. Description of monument for corner and accessories established to perpetuate locating the position of the corner:

E-3
Removed carriage bolt and set standard Allegan Co. Remon. monument
(3/4" x 36" steel rod w/red cap #23520)

Nail & Remon. tag in N side 25" Walnut	S80°E	19.16'
Nail & Remon. tag in NW side 15" Tulip Poplar	N65°E	13.18'
Nail & Remon. tag in SE side 5" Maple	S55°W	9.06'
Nail & Remon. tag in S side 13" Poplar	N70°W	36.94'
Nail & Remon. tag in NE side 20" Maple	S70°E	55.36'

Note: All trees blazed except 20" Maple

Signed by Kirk L. Van Order
Surveyor's Michigan License No. 23520

Date 12-31-96



Section A (continued from Page 1)

E-3

Manlius Twp., T.3N., R.15W.

- (3) T.O. Williams survey notes dated Feb. 1889
Fd. stone and put in iron 80.70 chains (5326.20') West of G-3
40.16 chains (2650.56') South to E-4
Oak stump 48" SE 76
Oak stump 30" NW 94
- (4) D.A. Ratekin Associates corner witness card, corner not set
Bearing & distance to F-3 S88-12-15E 2619.49'
Bearing & distance to E-4 S02-04-00W 2654.96'
Breakdown info. Job #88-018 for A.C.R.C. Wightman-Moored

Section B

E-3

Recommend to accept this found bolt for E-3 position, and is accepted as a careful and faithful perpetuation of the position of the original corner.

Peer group approved Oct. 8, 1996.