

MAY 28 1997

ALLEGAN COUNTY REMONUMENTATION
LAND CORNER RECORDATION CERTIFICATE
Filing Requirement of Act 74, Mich. P.A. 1970

For corners in Allegan County

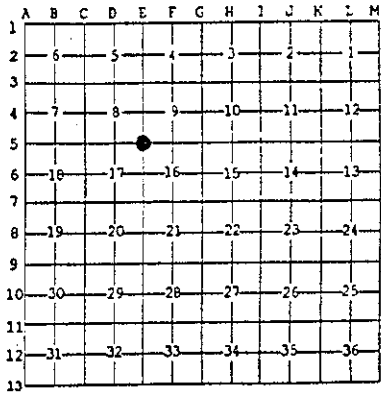
	Located In:	Cornet Code #
1. Public Land Survey	T 3N R 15W	E-5 (SE, 8)
	T R	Manlius Twp.
	T R	
	T R	
2. Property Controlling in Section	S T R	
	S T R	
3. Miscellaneous Property in Sec.	S T R	
	S T R	

97 JUN 22 PM 1:25
 REGISTER OF DEEDS
 ALLEGAN COUNTY, MICH.
 FILED
 Register of Deeds Stamp & File Number

4. Lot No. _____, Recorded Plat _____
 5. Private Claims _____

I, Kirk L. Van Order, in a field survey on AUG. 14, 1996 do hereby state that under requirements of P.A. 74, Michigan P.A. of 1970, the corner points mentioned in lines 1 and 2 above were in conformance with regulations and rules therefore as required in the current manual of survey instructions of the United States Department of the Interior, Bureau of Land Management or by a decree of a Court of Law and for that the corner points mentioned in lines 3, 4 and 5 above were in conformance with the rules of the Michigan Board of Land Surveyors or by a Decree of a Court of Law, established, re-established, monumented, recovered, found as expressed below:

NOTE: Not more than 2 corners, all in the same town and range, may be recorded on this certificate.



A. Description of original monument and accessories and/or subsequent restoration:

- E-5
- (1) GLO North between Sec. 16 & 17 80.00 chains
 Set post corner of Sec. 8, 9, 16 & 17
 Maple 8 S32-1/2°E 68 links
 W. Oak 9 N22°W 40 links
 - (2) D.A. Ratekin Associates, Inc. dated Oct. 17, 1968
 Set 3/4" iron C.P.C. survey
 11" Maple NE 15.3'
 12" Maple SW 13.7' (continued on back of sheet)

B. Description of corner evidence found and/or method applied in restoring or reestablishing corner:

E-5
 Kirk L. Van Order, P.C. Remon. survey Aug. 14, 1996
 Fd. 3/4" x 22" tapered steel rod
 Fd. Maple NE 15.3'
 Fd. Maple stump SW 13.7'
 Fd. Maple stump NW 20.65'
 Measured North 5298.60' to E-3
 Measured East 5358.09 to G-5
 Recommend holding this position for E-5, and is accepted as a careful and faithful perpetuation of the position of the original corner. Peer group approved Oct. 8, 1996. 2649.30' off road traverse.

APPROVED REMONUMENTATION CORNER
 P.A. 345 OF 1990
 ALLEGAN COUNTY
 DATE APPROVED 10-8-96
 COUNTY REP. [Signature]

C. Description of monument for corner and accessories established to perpetuate locating the position of the corner:

E-5
 Removed tapered steel rod and set standard Allegan Co. Remon. monument (3/4" x 36" steel rod w/red cap #23520)
 Nail & Remon. tag in NW side 16" Maple N65°E 15.97'
 Nail & Remon. tag in W side 7" Maple N05°W 28.76'
 Nail & Remon. tag in NE side 8" Elm N50°W 24.49'
 Nail & Remon. tag in S side 28" Maple N85°W 60.08'

Signed by [Signature]
 Surveyor's Michigan License No. 23520

Date 12-31-96



152P 0005 PAGE 463

FORM APPROVED BY MICHIGAN STATE BOARD OF PROFESSIONAL SURVEYORS, 5/11/75, 1971
 REVISED MAY 14, 1973
 REVISED JAN, 1983
 REVISED OCT., 1995

Section A (continued from Page 1)

E-5

Manlius Twp., T.3N., R.15W.

26" Maple NW 20.65'

West 5325.48' to C-5

East 5361.43' to G-5

South 2649.94 to E-6

With an angle of 179°-43'-22" to the right from G-5 to C-5

(3) D.N.R. same witnesses as in (2)

(4) Holland Engineering, Inc. same as in (2)