

Allegan County Remonumentation

LAND CORNER RECORDATION CERTIFICATE
Filing Requirement of Act 74, Mich. P.A. 1970

For corners in
Allegan
(County)

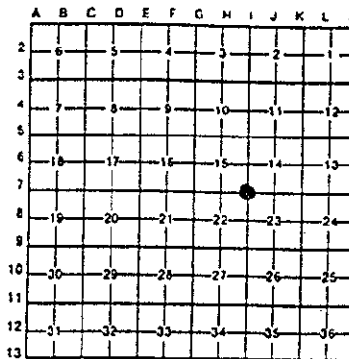
	Located In:	Corner Code #
	4N 11W	1-7 (SE cor. 15)
1. Public Land Survey	T _____ R _____	Leighton-Twp.
	T _____ R _____	_____
	T _____ R _____	_____
	T _____ R _____	_____
2. Property Controlling in Section	S _____ T _____ R _____	_____
	S _____ T _____ R _____	_____
3. Miscellaneous Property in Sec.	S _____ T _____ R _____	_____
	S _____ T _____ R _____	_____

REGISTERED
 ALLEGAN COUNTY
 97 JAN 22 PM 1:25
 FILED

Register of Deeds Stamp & File Number

4. Lot No. _____, Recorded Plat _____
 5. Private Claims _____

I, Steven Koerber, in a field survey on October 3, 1996, do hereby certify that under requirements of P.A. 74, Michigan P.A. of 1970, the corner points mentioned in lines 1 and 2 above were in conformance with regulations and rules therefore as required in the current manual of survey instructions of the United States Department of the Interior, Bureau of Land Management or by a decree of a Court of Law and/or that the corner points mentioned in lines 3, 4 and 5 above were in conformance with the rules of the Michigan Board of Land Surveyors or by a Decree of a Court of Law; established, re-established, monumented, re-monumented, recovered, found as expressed below:



NOTE: Not more than 4 corners, all in the same town and range, may be recorded on this certificate.

A. Description of original monument and accessories and/or subsequent restoration:

I-7 GLO Sylvester Sibley DS 1831
 W. Oak 8 N37E 29
 Do 7 S61W 23

1. November 21, 1981
 L.C.R.C., L.3, PG 327
 Paul Van Kooten
 Set capped iron on C/L road with fence and tree row to North & South
 Sq. spike in E. sdc. 20" Twin Cherry N 48.77'
 Sq. spike in W. Sdc. 42" Oak S 29.73'
 Sq. spike in S. Sdc. 18" Walnut W-NW 94.95'
 USGS conc. Mon. NE 57.08'

B. Description of corner evidence found and/or method applied in restoring or reestablishing corner:

I-7 Found Capped Iron
 Sq. spike in E. sdc. 20" Twin Cherry N 48.77'
 Sq. spike in W. Sdc. 42" Oak S 29.73'
 Sq. spike in S. Sdc. 18" Walnut W-NW 94.95'
 USGS conc. Mon. NE 57.08'

APPROVED REMONUMENTATION CORNER
 P.A. 345 OF 1990
 ALLEGAN COUNTY
 DATE APPROVED 11-26-96
 COUNTY REP. Rich L. VanCura

This corner is accepted as a careful and faithful perpetuation of the position of the original corner.
 Feat Group approval November 26, 1996.

C. Description of monument for corner and accessories established to perpetuate locating the position of the corner:

I-7 Replaced Capped Iron with Allegan Co. Mon. (3/4" x 24" Iron Rod with Remonumentation cap)
 Nail & Allegan Co. Remon. Tag in E. side 14" Walnut N30°E 65.35'
 Nail & Allegan Co. Remon. Tag in E. side 10" Cherry N5°E 63.62'
 Nail & Allegan Co. Remon. Tag in E. side 10" Ash S10°W 58.92'
 Set 3/4" x 24" Allegan Co. Remon. Iron Rod and Remon. witness cap S30°E 66.07'
 J-7, T4N, R11W 2634.94'
 H-7, T4N, R11W 2648.51'

Signed by Steve Koerber Date 12-10-1996

Surveyor's Michigan License No. 39085

LIB# 0005 PAGE 442

