

MAR 16 1994

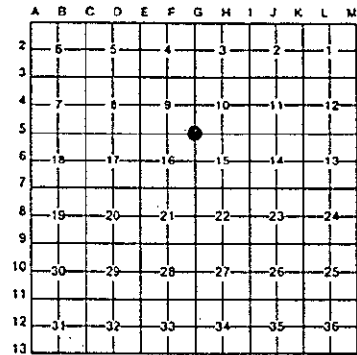
ALLEGAN COUNTY REMONUMENTATION
LAND CORNER RECORDATION CERTIFICATE
Filing Requirement of Act 74, Mich. P.A. 1970

For corners in
COMMISSION
Allegan
(County)

	Located In:	Corner Code #
1. Public Land Survey	T <u>4N</u> R <u>13W</u>	<u>G-5</u>
	T _____ R _____	<u>Sec. 9, 10,</u>
	T _____ R _____	<u>15 & 16 Cor.</u>
	T _____ R _____	<u>Salem Twp.</u>
2. Property Controlling in Section	S _____ T _____ R _____	_____
	S _____ T _____ R _____	_____
3. Miscellaneous Property in Sec.	S _____ T _____ R _____	_____
	S _____ T _____ R _____	_____
4. Lot No. _____, Recorded Plat _____		
5. Private Claims _____		

1993 DEC 30 PM 2:48
 REGISTER OF DEEDS
 ALLEGAN COUNTY, MICH.
 Register of Deeds Stamp & File Number
 FILED

I, Kirk VanOrder, in a field survey on December 8, 1993 do hereby certify that under requirements of P.A. 74, Michigan P.A. of 1970, the corner points mentioned in lines 1 and 2 above were in conformance with regulations and rules therefore as required in the current manual of survey instructions of the United States Department of the Interior, Bureau of Land Management or by a decree of a Court of Law and/or that the corner points mentioned in lines 3, 4 and 5 above were in conformance with the rules of the Michigan Board of Land Surveyors or by a Decree of a Court of Law; established, re-established, monumented, re-monumented, recovered, found as expressed below:



NOTE: Not more than 4 corners, all in the same town and range, may be recorded on this certificate.

A. Description of original monument and accessories and/or subsequent restoration:

<u>G-5</u>	•LCRC (L.1, P.342) 4-11-1972
•GLO set post @ 80.00 chains	1 1/2" iron in monument box
North of G-7.	10" Maple S45°W 49.6'
45" W. Wood S16°W 8 links	38" Maple S35°E 47.8'
20" Sugar Maple N16°E 7 links	16" Maple N45°E 42.1'
•MacDougall notes June 1, 1912	NE cor. BUEGE mon. S45°W 60.62'
Stone	USGS BM #E159 N60°E 54.44'
18" Maple SE 48.7'	•Ratekin surveys: (L.899, Pgs. 239, 241, 271, 281)
Tel. Pole SW 42.8'	

B. Description of corner evidence found and/or method applied in restoring or reestablishing corner:

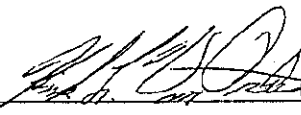
G-5
 Found 1 1/2" x 10 1/2" long steel rod in monument box.
 NW cor. base BUEGE monument S45°W 60.62'
 USGS BM #E159 N60°E 54.44'
 10" Maple S45°W 49.6'

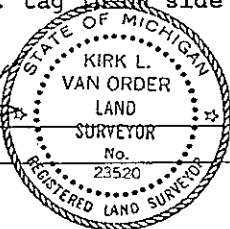
Found stone below.

Accepted as a careful and faithful perpetuation of the position of the original corner.

C. Description of monument for corner and accessories established to perpetuate locating the position of the corner:

G-5
 Replaced 1 1/2" steel rod with standard Allegan Co. monument (3/4" x 14" steel rod with red plastic cap) in monument box above stone.
 C/L USGS BM #E159 N65°E 54.44'
 NW cor. base "Heasley" grave monument AZ. 123°43'± 81.36'
 NE cor. base "Buege" grave monument AZ. 236°20'± 60.62'
 Nail & Allegan Co. Remon. tag in NE side Tele. Pole AZ. 288°28'± 73.36'
 Nail & Allegan Co. Remon. tag in NW side 18" Maple AZ. 224°46'± 49.89'

Signed by 
 Surveyor's Michigan License No. 23520



Date 12-30-93